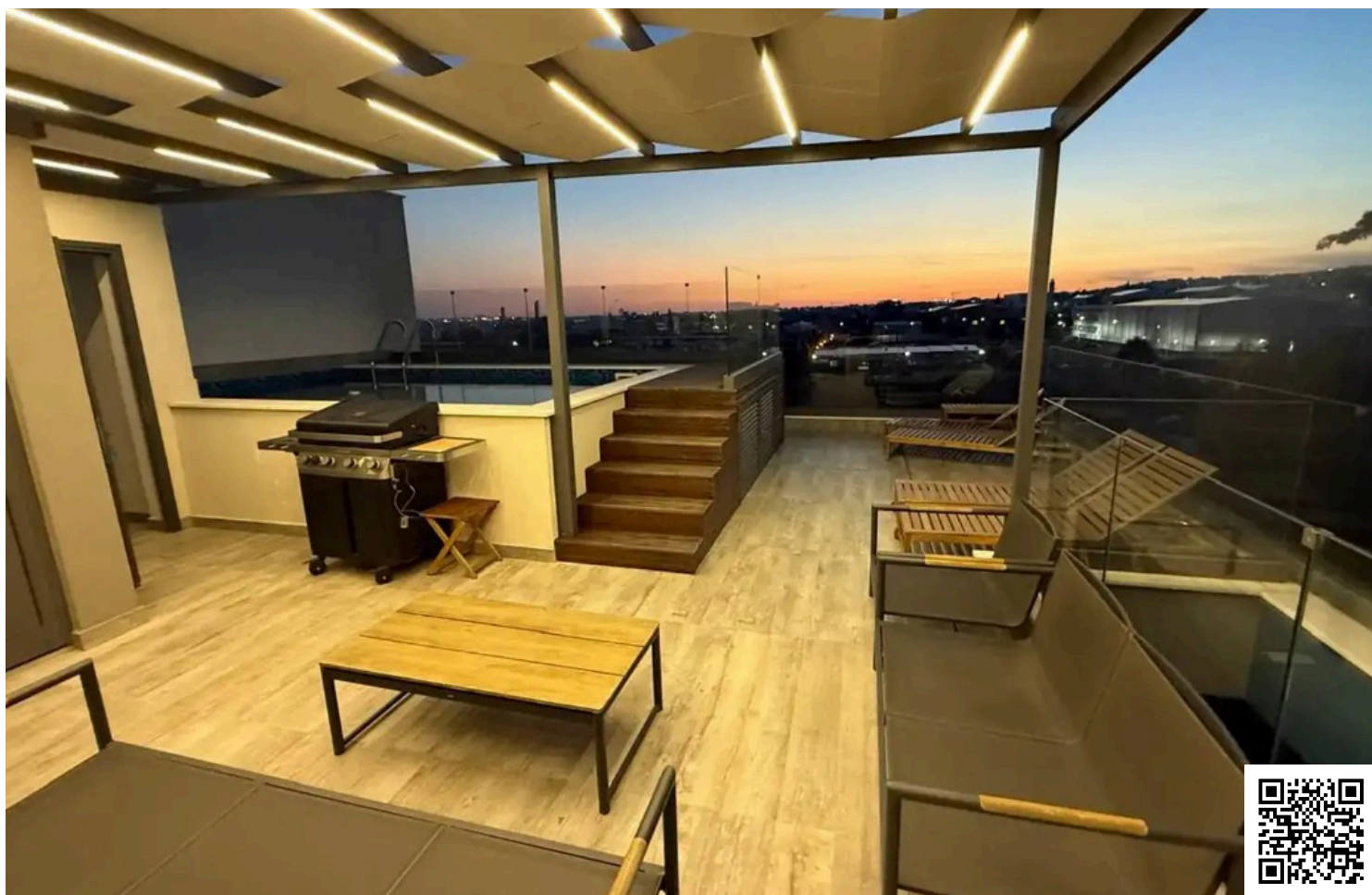


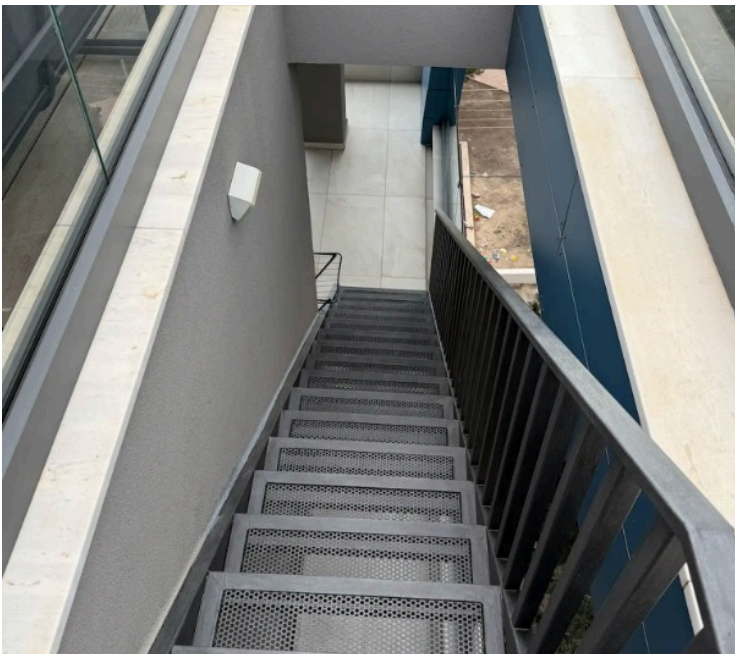
#3268

# 2-Bedroom Penthouse, Germasoya, Limassol

📍 Germasogeia Tourist Area, Limassol

€570,000





# Overview

## Specifications

Bedrooms

 2

Bathrooms

 2

Covered

 91 m<sup>2</sup>

Type **Apartment**

Covered veranda **68 m<sup>2</sup>**

Roof garden **57 m<sup>2</sup>**

Status **Resale**

Year of construction **2021**

## Description

Discover elevated living in the heart of Columbia Area with this stunning 2-bedroom penthouse featuring a private swimming pool and breathtaking panoramic views. Ideally located next to a beautiful park, this exceptional residence offers easy access to the roundabout of Agios Athanasios and is conveniently situated just above the highway, combining tranquility with excellent connectivity. Designed for modern comfort and outdoor lifestyle, the penthouse boasts a very large veranda perfect for relaxing, entertaining, and enjoying Cyprus sunsets. Surrounded by shops, restaurants, offices, and all everyday amenities, this property is an outstanding opportunity for both homeownership and investment.

Specifications:

- Covered Areas: 91m<sup>2</sup>
- Covered Verandas: 68m<sup>2</sup>
- Roof Garden: 57 m<sup>2</sup>

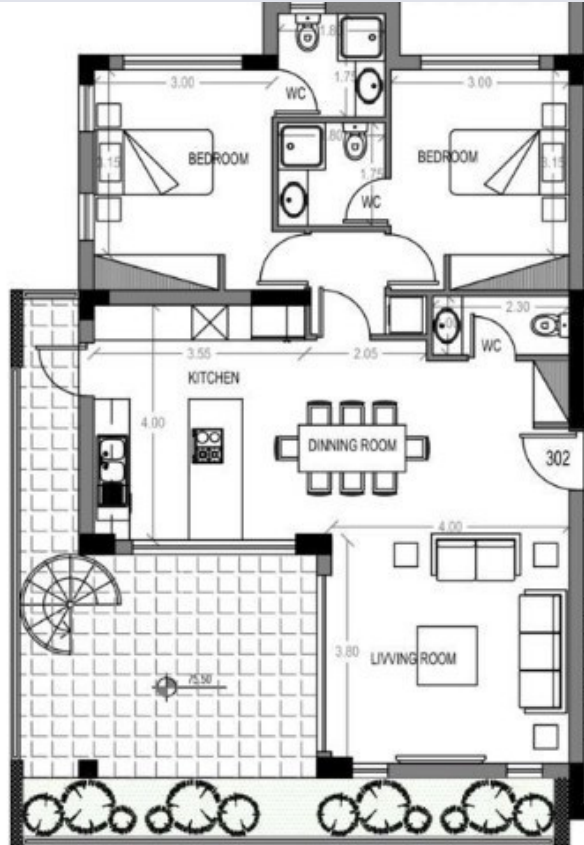
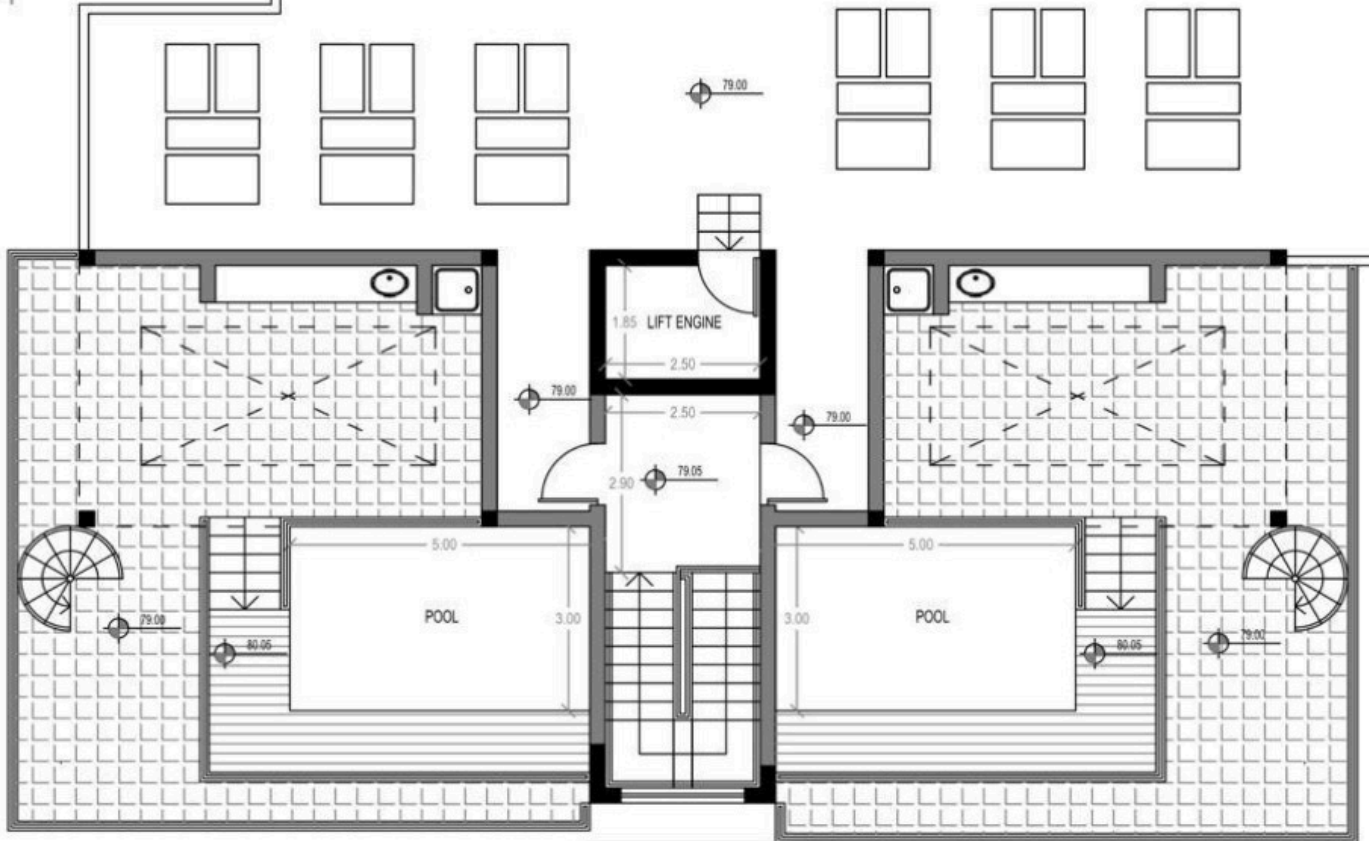
Price: €570.000 NO VAT

A rare chance to own a luxury penthouse in one of Limassol's most desirable locations — where style, convenience, and spectacular views come together perfectly.



# Floor plans

1 of 1



# Additional information

## Facilities

Aircondition, Provision

Heating, Underfloor

Parking, Covered

Pool, Private

Storage

## Features

Bright

Easy access to main roads

En suite shower

Fitted wardrobes

Guest WC

Investment opportunity

Modern design

Open plan

Panoramic view

Roof garden

Sea view

Suitable for work

