

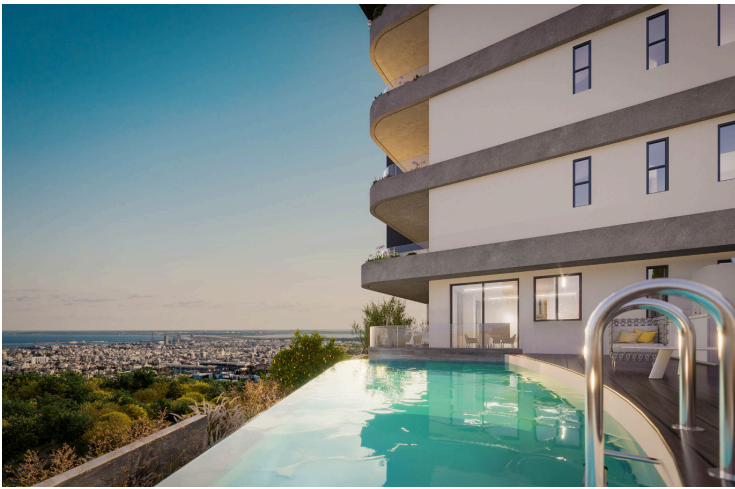
#3260

# 3-Bedroom Penthouse, Agia Fyla, Limassol

📍 Agia Fyla, Limassol

€1,154,000 +VAT





# Overview

## Specifications

Bedrooms

 3

Bathrooms

 3

Covered

 130 m<sup>2</sup>

Type **Apartment**

Covered veranda **58 m<sup>2</sup>**

Uncovered veranda **96 m<sup>2</sup>**

Garden **67 m<sup>2</sup>**

Status **Under construction**

Energy efficiency rating  **A+**

## Description

Spacious versatile 3-bedroom apartment with the potential to easily create a fourth room, perfectly designed to suit both families and investors. The property features a large veranda ideal for relaxing or entertaining along with the charming landscaped garden and the pool that adds a touch of tranquility to everyday living.

Enjoy spectacular panoramic unobstructed sea and city views from your home, creating a unique blend of urban convenience and scenic beauty. Located on a very desirable street in Agia Fyla, this apartment offers a peaceful residential setting while remaining incredibly close to everything you need. Within minutes, you'll find shops, schools, restaurants, and all essential amenities—everything literally within easy reach. The location is perfect for families seeking comfort and convenience, as well as for investors looking for a high-demand property in a prime area.

Specifications:

Covered Area: 130m<sup>2</sup>

Covered veranda: 58m<sup>2</sup>

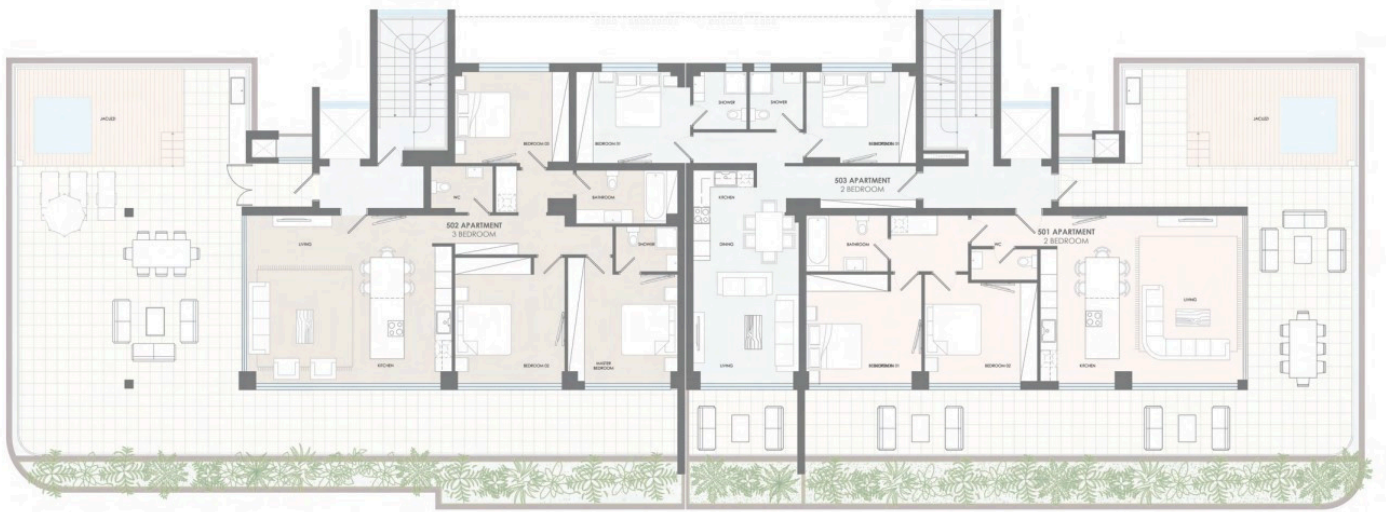
Uncovered veranda: 96m<sup>2</sup>

Price: €1.154.000 +VAT

A rare opportunity combining space, flexibility, stunning views, and an unbeatable location—this is a property that truly has it all.



# Floor plans



FIFTH FLOOR PLAN



# Additional information

## Facilities

Aircondition, Central system

Heating, Underfloor

Pool, Communal, overflow

Elevator

Landscaped garden

Storage

Gym

Parking, Covered

## Features

Alarm system (provision)

Double glazing

Energy efficient doors/windows

Mountain view

Sound insulation

Bright

Easy access to highway

Fitted wardrobes

Quiet area

Thermal insulation

Cul de sac

Easy access to main roads

Modern design

Sea view

