

#3239

2-Bedroom Apartment, Tsiflikoudia, Limassol

📍 Tsiflikoudia, Limassol

€643,000 +VAT





Overview

Specifications

Bedrooms

 2

Bathrooms

 2

Covered

 84 m²

Type	Apartment	Year of construction	2029
Covered veranda	28 m²	Energy efficiency rating	 A
Status	Incomplete		

Description

Modern 2-bedroom apartment located in a 7-storey building in the up-and-coming Tsiflikoudia area of Limassol. Ideally positioned just a few steps from the sea and within walking distance to the marina and city centre, this property offers an excellent blend of convenience and coastal lifestyle. The apartment features a bright and comfortable living room with a modern design, creating a welcoming atmosphere for everyday living. Residents also enjoy access to a communal gym, enhancing both comfort and quality of life.

Specifications:

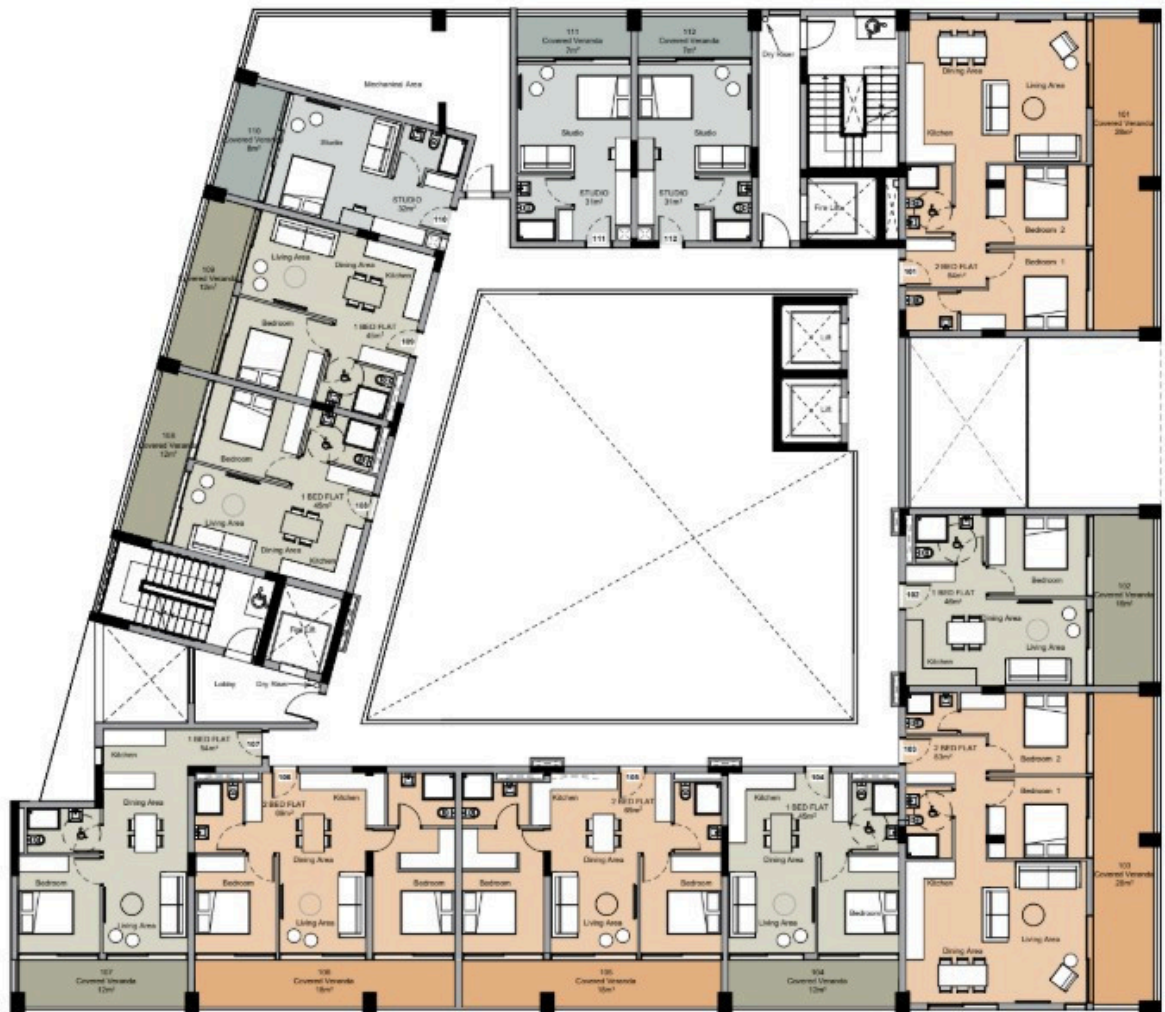
- Covered Area: 84m²
- Covered Porches: 28m²

Price: €643,000+VAT

Situated in one of Limassol's most promising areas, this property is perfect for investment as well as for individuals or small families seeking a well-located home with strong rental potential.



Floor plans



Additional information

Facilities

Aircondition, Provision

Gym

Parking, Covered

Storage

Features

24-hour security

Bright

Fitted wardrobes

Heart of city center

Kitchen island

Lobby

Shower

Suitable for work

Veranda

