

#3238

# 1-Bedroom Apartment, Tsiflikoudia, Limassol

📍 Tsiflikoudia, Limassol

€354,000 +VAT





# Overview

## Specifications

Bedrooms



1

Covered

45 m<sup>2</sup>

Type

**Apartment**

Covered veranda

**12 m<sup>2</sup>**

Status

**Incomplete**

Year of construction

**2029**

Energy efficiency rating

**A**

## Description

Modern 1-bedroom apartment located in a 7-storey building in the up-and-coming Tsiflikoudia area of Limassol. Ideally positioned just a few steps from the sea and within walking distance to the marina and city centre, this property offers an excellent blend of convenience and coastal lifestyle. The apartment features a bright and comfortable living room with a modern design, creating a welcoming atmosphere for everyday living. Residents also enjoy access to a communal gym, enhancing both comfort and quality of life.

Specifications:

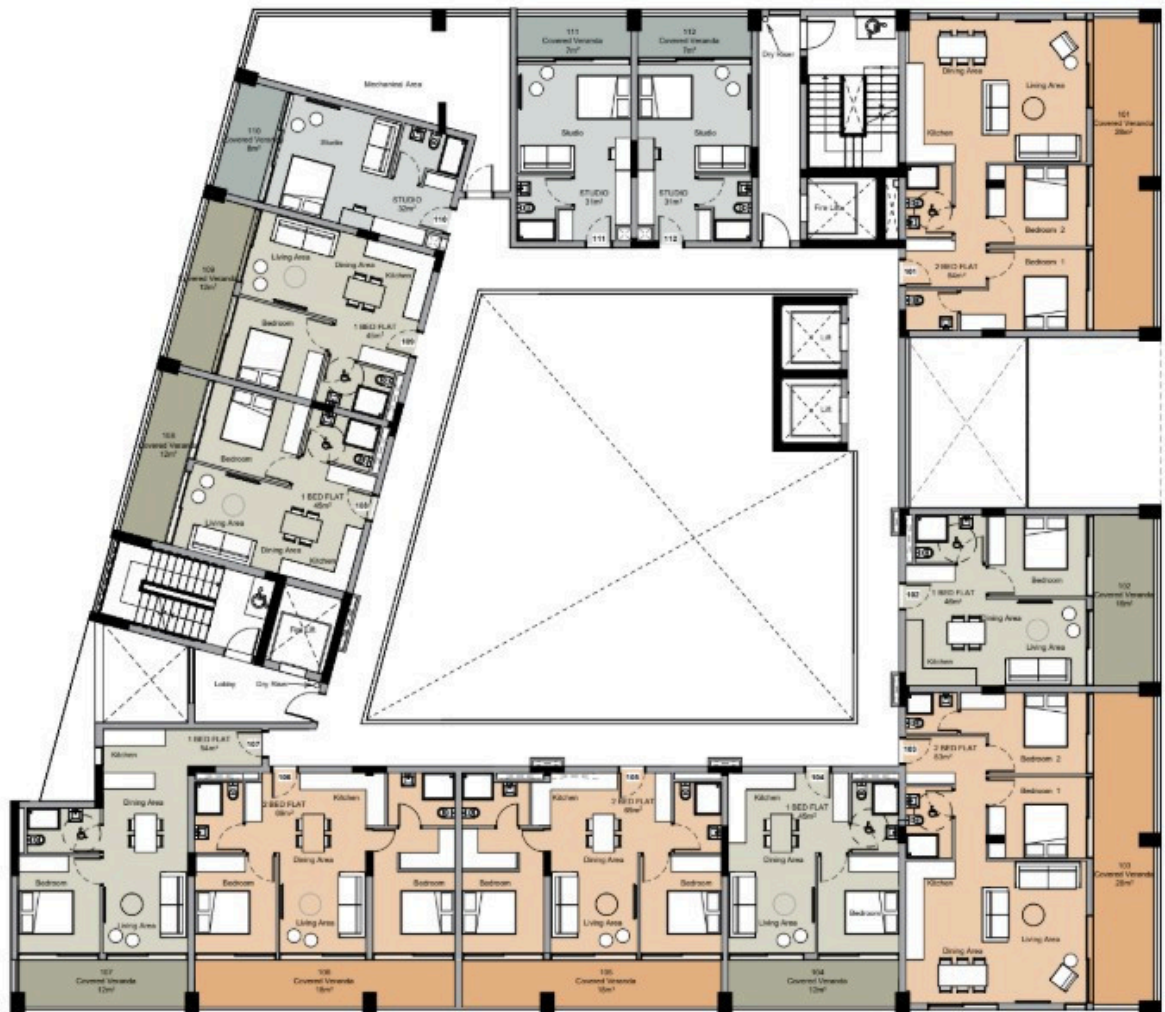
- Covered Area: 45m<sup>2</sup>
- Covered Porches: 12m<sup>2</sup>

Price: €354,000+VAT

Situated in one of Limassol's most promising areas, this property is perfect for investment as well as for individuals or small families seeking a well-located home with strong rental potential.



# Floor plans



# Additional information

## Facilities

Aircondition, Provision

Gym

Parking, Covered

Storage

## Features

24-hour security

Bright

Fitted wardrobes

Heart of city center

Kitchen island

Lobby

Shower

Suitable for work

Veranda

