

#3237

2-Bedroom Penthouse, Columbia, Limassol

📍 Germasogeia Tourist Area, Limassol

€575,000 +VAT





Overview

Specifications

Bedrooms

 2

Bathrooms

 2

Covered

 85 m²

Type **Apartment**

Covered veranda **18 m²**

Roof garden **55 m²**

Status **Off plan**

Year of construction **2028**

Energy efficiency rating  **A**

Description

Spacious 2-bedroom penthouse located in the highly sought-after Columbia area of Germasogeia, just above Kolonakiou Street, offering an exceptional blend of comfort, privacy, and prime location. This unique property features a large private roof terrace, perfect for outdoor living and entertaining, with the added potential to install a jacuzzi. Ideally positioned, the apartment provides immediate access to all amenities, including shops, supermarkets, cafes, and restaurants, and offers easy access to the highway, the beach, and Limassol city centre.

Specifications:

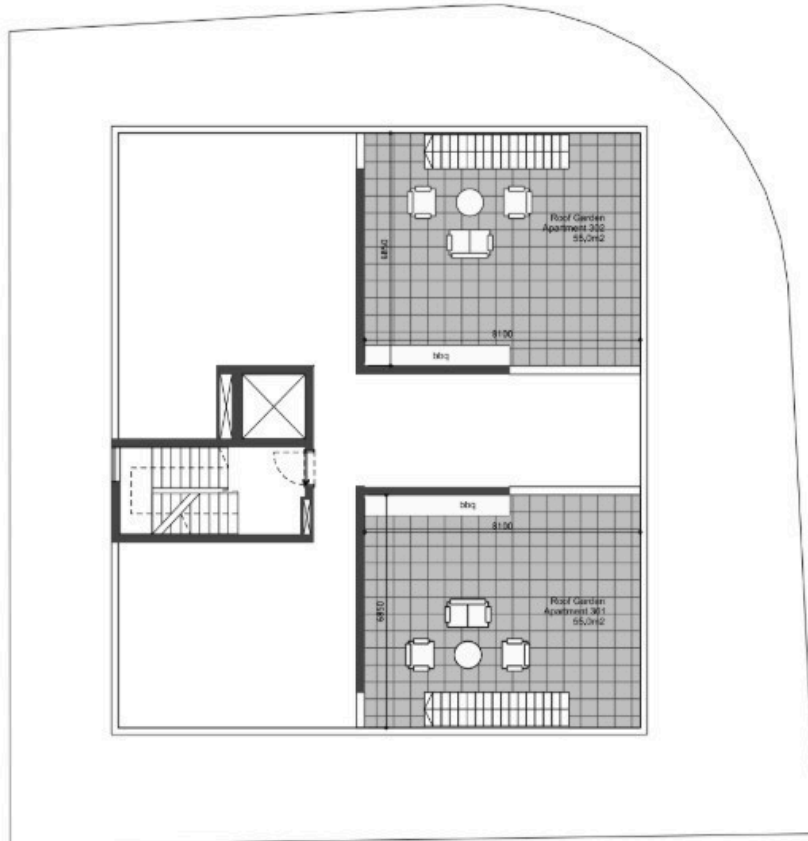
- Covered Area: 85m²
- Covered Porches: 18m²
- Roof Top: 55 m²

Price: €575.000+VAT

The area is known for its pleasant surroundings, accessibility, and vibrant lifestyle, making it one of the most desirable locations in Limassol.



Floor plans



ings and decorative elements depicted in the attached drawings are for illustrative purposes
of the Contract of Sale, unless otherwise agreed between Parties.



ishings and decorative elements depicted in the attached drawings are for illustrative purposes
of the Contract of Sale, unless otherwise agreed between Parties.



Additional information

Facilities

Parking, Covered

Storage

Features

Bright

En suite shower

Fitted wardrobes

Floor-to-ceiling windows

Kitchen island

Open plan

Roof garden

Shower

Veranda, large

