

#3231

2-Bedroom apartment, Kato Polemidia, Limassol

 Kato Polemidia, Limassol

€333,000 +VAT





Overview

Specifications

Bedrooms



2

Bathrooms



2

Covered

76 m²

Type

Apartment

Covered veranda

25 m²

Status

Off plan

Year of construction

2029

Energy efficiency rating

A

Description

This stylish 2-bedroom apartment is set in a modern complex of four buildings in Kato Polemidia, offering excellent lifestyle facilities including a communal swimming pool, gym, and children's playground. Ideally located close to the university, with very easy access to the highway and nearby Palodia, the property combines convenience with strong rental potential.

Specifications:

- Covered Area: 76m²

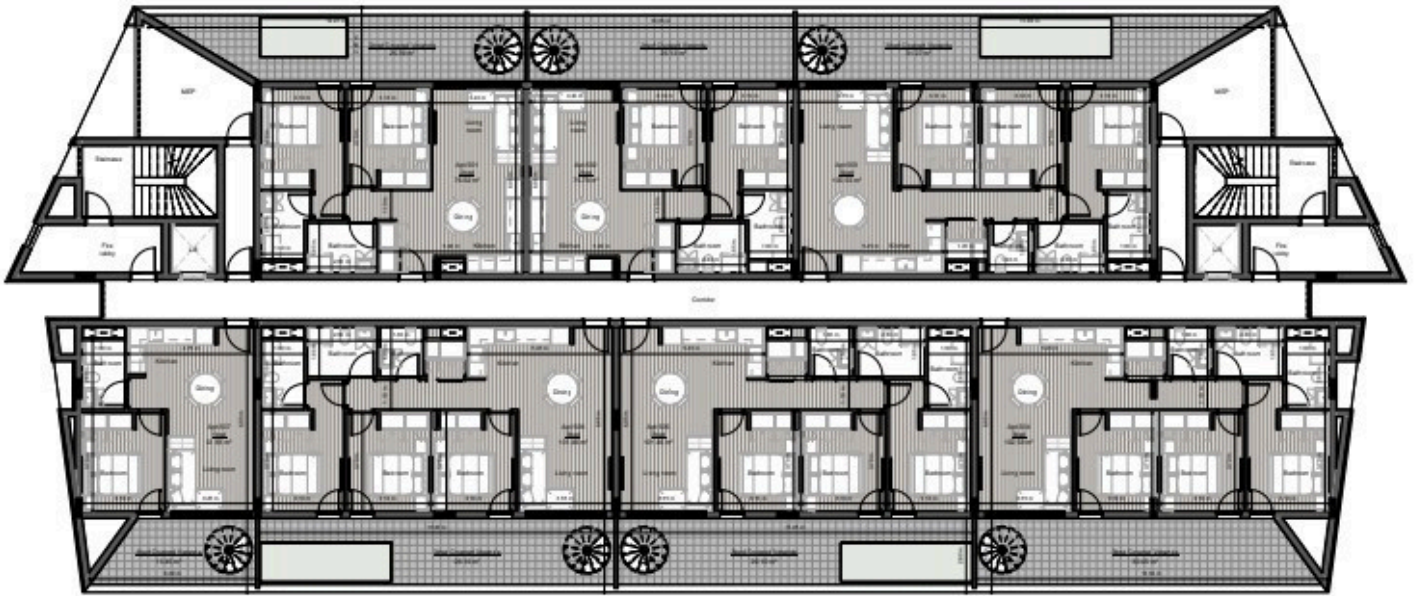
- Covered Veranda: 25m²

Price: €333.000 + VAT

Perfectly suited for both investment and personal living, this apartment offers a contemporary, low-maintenance lifestyle in a rapidly developing area—an opportunity not to be missed.



Floor plans



Additional information

Facilities

Aircondition, Provision

Outdoor shower

Storage

Gym

Parking, Covered

Landscaped garden

Pool, Communal, overflow

Features

Country view

Mountain view

Shower

Easy access to main roads

Near amenities

Suitable for work

High ceilings

Open plan

