

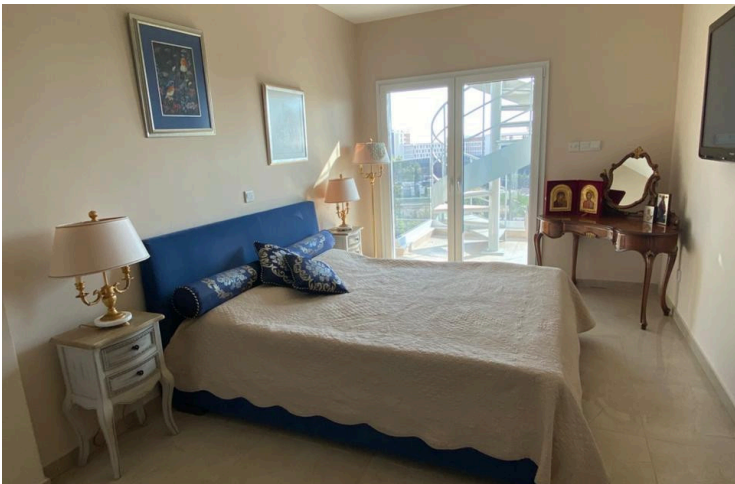
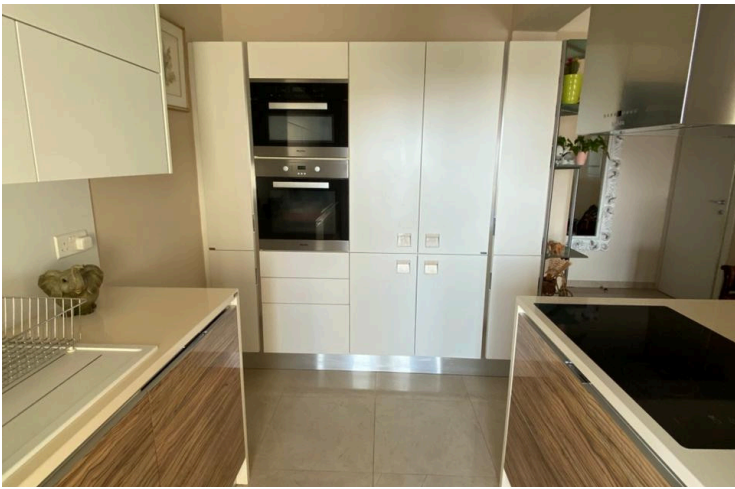
#3219

# 4-Bedroom Penthouse, Parekklesia, Limassol

📍 Parekklesia, Limassol

€800,000





# Overview

## Specifications

Bedrooms

 4


Bathrooms

 3

Covered

 149 m<sup>2</sup>

Type	<b>Apartment</b>
Covered veranda	<b>31 m<sup>2</sup></b>
Roof garden	<b>42 m<sup>2</sup></b>
Year of construction	<b>2017</b>

Title deed	<b>Yes</b>
Furnished	<b>Fully furnished</b>
Energy efficiency rating	 <b>A</b>

## Description

Presenting a luxurious 4-bedroom penthouse in a prestigious residential complex with beautiful sea views in Limassol.

Located just minutes from the beach, this exceptional penthouse combines spacious interiors, elegant design, and premium lifestyle facilities within a secure 5-star development.

The property features a huge living area, four spacious bedrooms, three bathrooms, and a private rooftop terrace with a BBQ area and stunning panoramic views. High-quality Italian furniture, underfloor heating, a fireplace, and Miele appliances add to the apartment's luxurious atmosphere.

Additional features include double-glazed sound-insulated windows, a storage room, and two covered parking spaces.

Residents enjoy exclusive access to premium facilities, including a concierge service, 24-hour security, a swimming pool, a gym, a spa, a sauna, playgrounds, a sports area, and a fully equipped beach.

Specifications:

Covered Area: 149m<sup>2</sup>

Covered Veranda: 31m<sup>2</sup>

Roof Garden: 42m<sup>2</sup>

Price: €800.000 (No VAT)

Contact us for more information or to arrange a viewing.



# Additional information

## Facilities

Aircondition, Split system

Heating, Underfloor

Sauna

Gated complex

Parking, Covered

Storage

Gym

Pool, Communal

## Features

24-hour security

Double glazing

Elevated

Garden

Luxury specifications

Next to green area

Quiet area

Sea view

Veranda

Barbeque

Easy access to highway

En suite bathroom

Guest WC

Modern design

Panoramic view

Roof garden

Sound insulation

Walking distance to beach

Bright

Easy access to main roads

Entrance gate

High ceilings

Near amenities

Pool view

Sea front

Spacious rooms

