

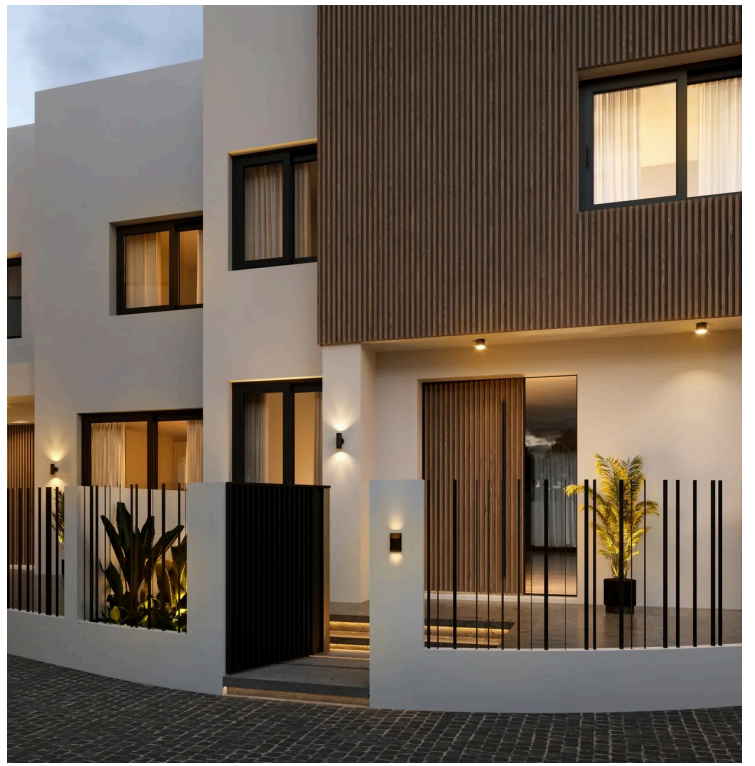
#3124

3-Bedroom Detached House, Parekklesia, Limassol

📍 Parekklesia, Limassol

€400,000 +VAT





Overview

Specifications

Bedrooms

 3


Bathrooms

 3

Covered

 135 m²

Type	Detached House
Plot	250 m²
Covered veranda	6 m²
Uncovered veranda	110 m²

Status	Under construction
Year of construction	2028
Energy efficiency rating	 A

Description

Introducing this exceptional 3-bedroom detached house located in the Parekklesia area of Limassol. Just 20 minutes from the city centre and approximately 5 minutes from the highway and the beach, this property is ideal for those seeking a stylish permanent residence or a prime investment opportunity. The house offers a serene and secure lifestyle, complemented by elegant finishes throughout.

The ground floor features a spacious open-plan living and dining area seamlessly connected to a modern kitchen, along with a guest W/C. The upper floor comprises three well-sized bedrooms, including one with an en-suite bathroom, as well as a separate family bathroom serving the remaining bedrooms.

With its excellent location, functional layout, and high-quality construction, this property presents an outstanding choice for families seeking comfort, security, and convenience.

Specifications:

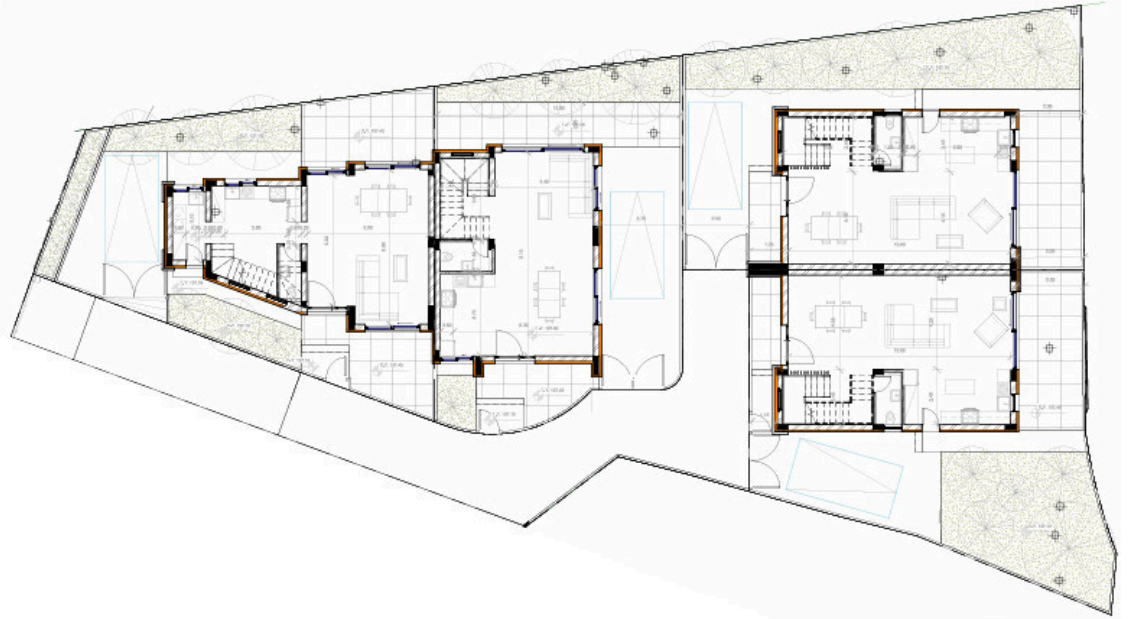
- Covered Area: 135m²
- Covered Veranda: 6m²
- Uncovered Veranda: 110m²
- Plot Area: 250m²

Price: €400.000+VAT

Contact us for a viewing.



Floor plans



Additional information

Facilities

Aircondition, Provision

Landscaped garden

Storage

Gated complex

Parking, Covered

Heating, Provision

Solar water heater

Features

CCTV

Elevated

Guest WC

Investment opportunity

Modern design

Quiet area

Easy access to highway

En suite bathroom

High ceilings

Laundry room

Near amenities

Spacious rooms

Easy access to main roads

Garden

Internal stairs

Luxury specifications

Open plan

Veranda

