

#3122

# 2-Bedroom Penthouse, Parekklesia, Limassol

📍 Parekklesia, Limassol

€275,000 +VAT





# Overview

## Specifications

Bedrooms



2

Bathrooms




2

Covered



80 m<sup>2</sup>

Type	<b>Apartment</b>
Covered veranda	<b>11 m<sup>2</sup></b>
Roof garden	<b>36 m<sup>2</sup></b>

Status	<b>Under construction</b>
Year of construction	<b>2028</b>
Energy efficiency rating	 <b>A</b>

## Description

Presenting this 2-bedroom penthouse nestled in the Parekklesia area in Limassol. Conveniently located approximately 20 minutes from Limassol city centre and 5 minutes from the highway and the beach, this property offers seamless access to a variety of amenities. Designed and constructed with meticulous attention to detail, it is an ideal opportunity for both investors and buyers.

This penthouse features outstanding design and high-quality finishes, ensuring a lifestyle of sophistication and comfort. Its proximity to essential services makes it an ideal choice for those seeking a suburban living experience.

Specifications:

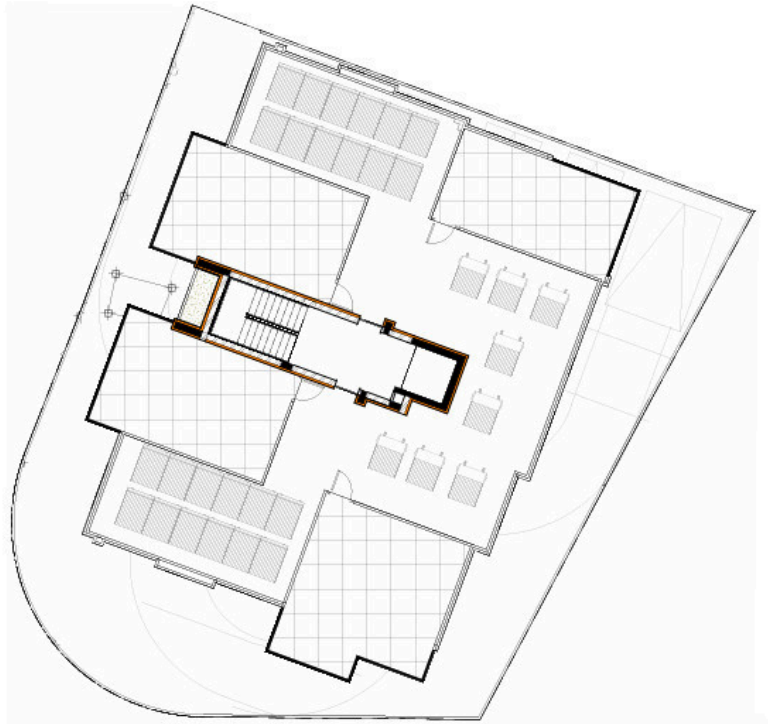
- Covered Areas: 80m<sup>2</sup>
- Covered Verandas: 11m<sup>2</sup>
- Roof Garden: 36m<sup>2</sup>

Price: €275.000+VAT

Contact us for a viewing.



# Floor plans



# Additional information

## Facilities

Aircondition, Provision

Heating, Provision

Parking, Covered

Solar water heater

Storage

## Features

Balcony

Bright

CCTV

Double glazing

Easy access to highway

Easy access to main roads

En suite bathroom

Guest WC

Investment opportunity

Modern design

Near amenities

Open plan

Quiet area

Roof garden

Spacious rooms

