

#3116

4-Bedroom Top-Floor Apartment, Panthea, Limassol

📍 Panthea, Limassol

€936,500 +VAT





Overview

Specifications

Bedrooms

 4

Bathrooms

 3

Covered

 166 m²

Type

Apartment

Covered veranda

47 m²

Status

Under construction

Energy efficiency rating

 **A+**

Description

Experience elevated living in this exceptional 4-bedroom top-floor apartment, offering breathtaking views and the rare luxury of occupying an entire floor. Thoughtfully designed for both privacy and versatility, the residence features a spacious 3-bedroom layout with an elegant living area on one side, while the other side offers a fully separate studio that provides endless possibilities—ideal as a home office, guest suite, or accommodation for domestic help. With expansive interiors, smart space separation, and premium finishes throughout, this unique property perfectly combines comfort, functionality, and exclusivity.

Specifications:

- Covered Area: 166 m²

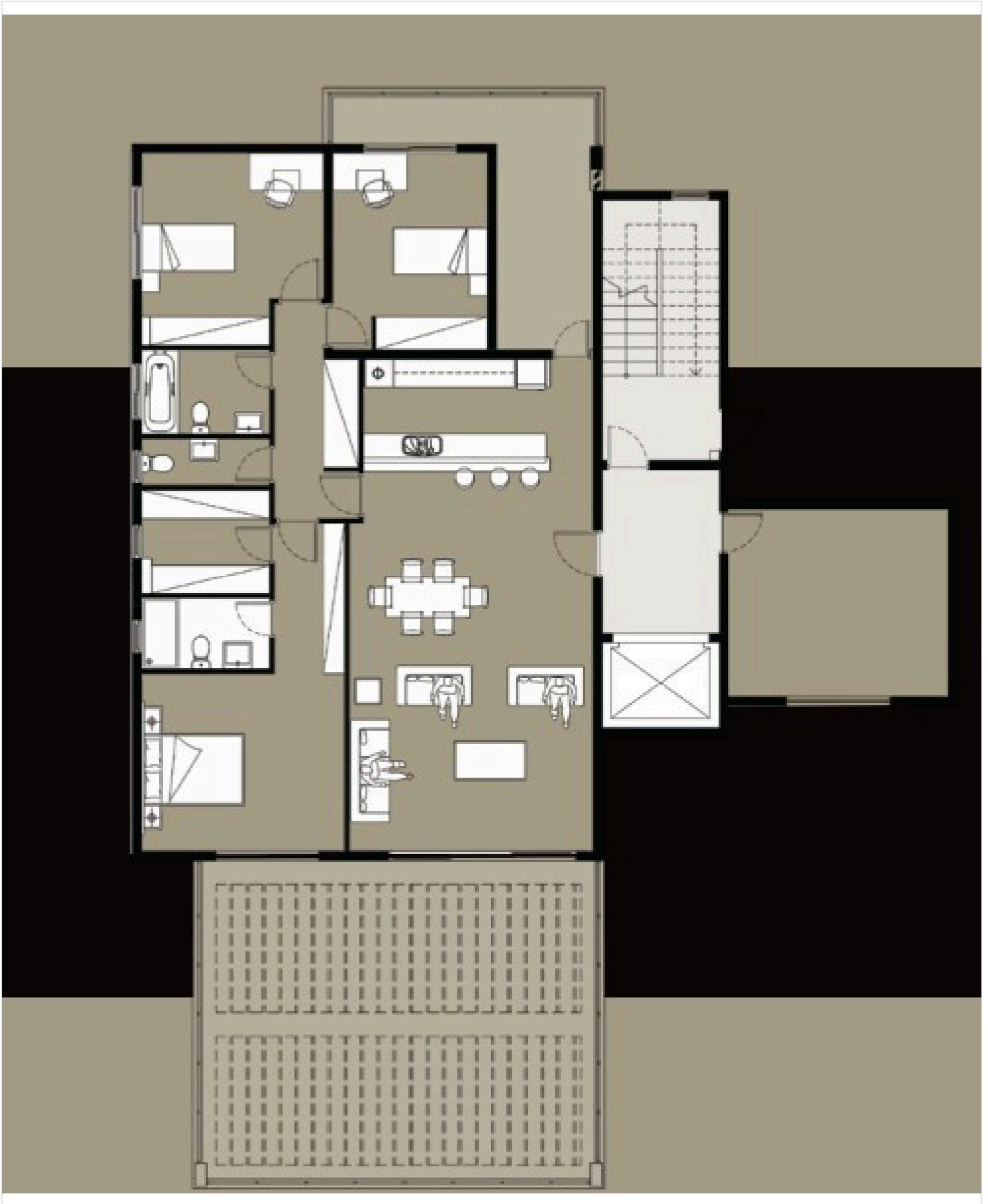
- Covered Veranda: 47 m²

Price: € 936,500+VAT

A standout choice for families seeking refined living or for investors seeking a truly distinctive opportunity.



Floor plans



Additional information

Facilities

Aircondition, Central system

Parking, Covered

Solar photovoltaic panels

Solar photovoltaic panels
(provision)

Features

Cul de sac

Double glazing

Easy access to main roads

En suite shower

High ceilings

Kitchen island

Modern design

Mountain view

Open plan

Shower

Veranda

Village view

Walk-in closet

