

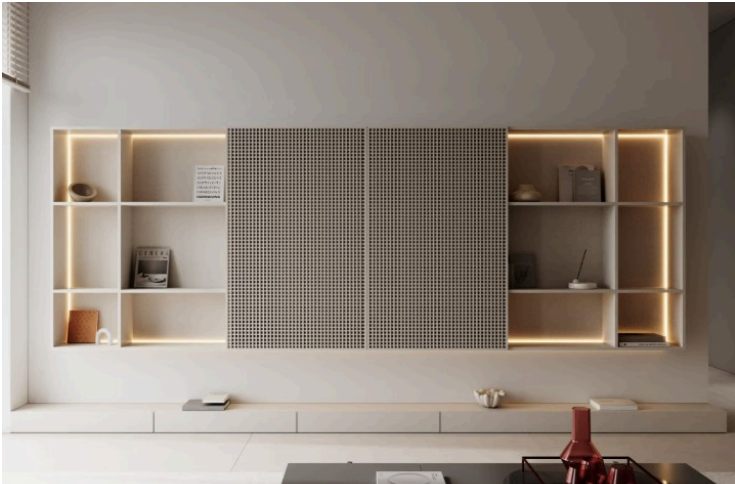
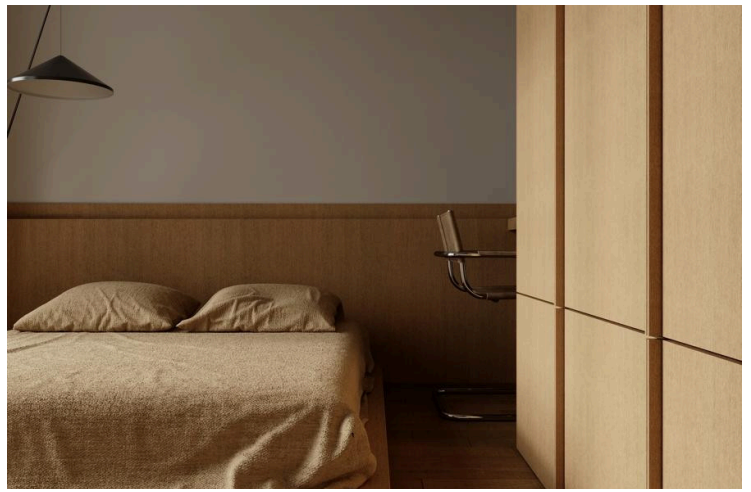
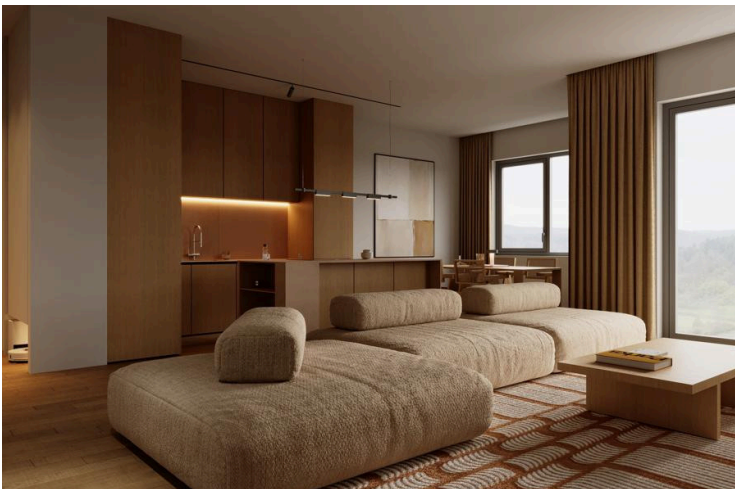
#3105

1-Bedroom Top-Floor, Panthea, Limassol

 Panthea, Limassol

€287,000 +VAT





Overview

Specifications

Bedrooms



Covered

 **50 m²**

Type	Apartment	Year of construction	2027
Covered veranda	13 m²	Furnished	Fully furnished
Status	Under construction		

Description

Experience elevated living in this stylish top-floor 1-bedroom apartment, perfectly located in the prestigious Panthea area. This elegant residence features a bright and well-designed layout, complemented by a 13m² veranda—ideal for relaxing and enjoying beautiful open views in total privacy. Built with modern architecture and high-quality finishes, the apartment offers underfloor heating for maximum comfort and a photovoltaic system for energy efficiency. Residents also enjoy access to a fully equipped gym. The property comes fully furnished and includes all electrical appliances, making it ready to move in or an excellent turnkey investment.

Perfect for singles, couples, or investors looking to benefit from strong rental demand in this desirable area.

- Covered Area: 50 m²

- Covered Porch 13 m²

Price: € 287,000

A smart investment and a beautiful place to call home—this is Panthea living at its finest.



Floor plans



Additional information

Facilities

Aircondition, Central system

Elevator

Gym

Heating, Underfloor

Parking, Covered

Solar photovoltaic panels

Solar photovoltaic panels
(provision)

Solar water heater

Storage

Features

24-hour security

Alarm system (provision)

Bath

Bathroom underfloor heating

Combined kitchen and dining
area

Easy access to main roads

En suite shower

Fitted wardrobes

High ceilings

Kitchen appliances

Kitchen island

Mountain view

Near amenities

Office

Open plan

Outdoor kitchen

Panoramic view

Sea view

Shower

Study

Village view

Walk-in closet

