

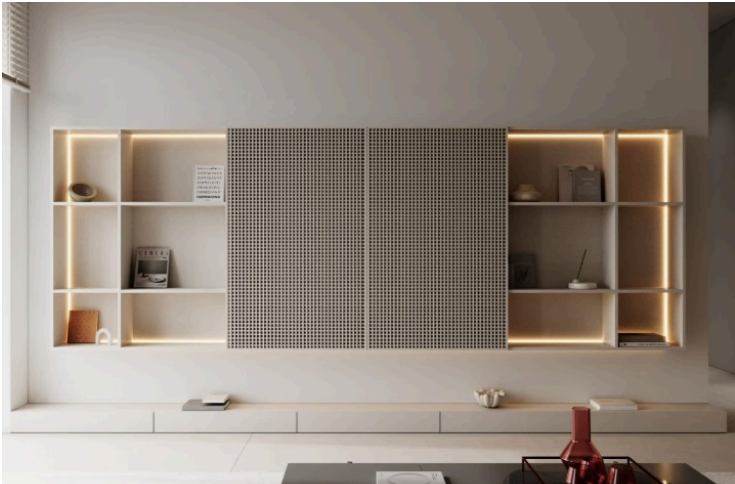
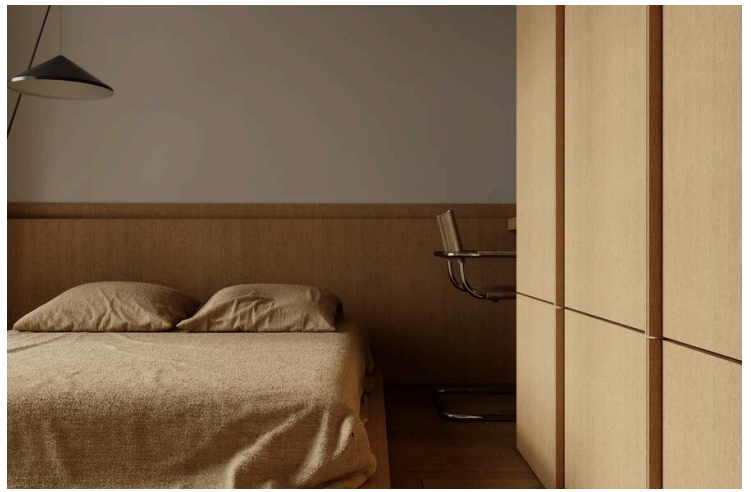
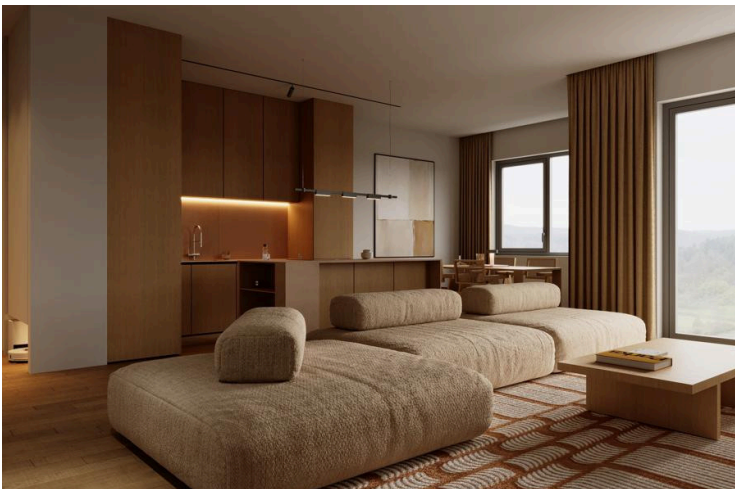
#3104

2-Bedroom Aparatment, Panthea, Limassol

 Panthea, Limassol

€428,000 +VAT





Overview

Specifications

Bedrooms



2

Bathrooms



2

Covered



80 m²

Type	Apartment	Year of construction	2027
Covered veranda	30 m²	Furnished	Fully furnished
Status	Under construction		

Description

Step into contemporary luxury with this stunning 2-bedroom apartment in the sought-after Panthea area—where style, comfort, and investment potential come together effortlessly. Enjoy breathtaking panoramic views from your expansive 30 m² veranda, the perfect space for morning coffee, sunset dinners, or entertaining guests in a truly impressive setting. Crafted with elegant design and high-quality finishes, this modern residence offers underfloor heating for ultimate comfort and a photovoltaic system for energy efficiency. Residents also benefit from access to a fully equipped gym. The apartment comes fully furnished and includes all electrical appliances—ready for you to move in or rent out immediately.

Ideal for families seeking a peaceful, upscale lifestyle or investors seeking strong rental returns in a high-demand location.

Specifications:

- Covered Area: 80 m²
- Covered Porch 30 m²

Price: € 428,000

A smart investment and a beautiful place to call home—this is Panthea living at its finest.



Floor plans



Additional information

Facilities

Aircondition, Central system

Elevator

Gym

Heating, Underfloor

Parking, Covered

Solar photovoltaic panels

Solar photovoltaic panels
(provision)

Solar water heater

Storage

Features

24-hour security

Alarm system (provision)

Bath

Bathroom underfloor heating

Combined kitchen and dining
area

Easy access to main roads

En suite shower

Fitted wardrobes

High ceilings

Kitchen appliances

Kitchen island

Mountain view

Near amenities

Office

Open plan

Outdoor kitchen

Panoramic view

Sea view

Shower

Study

Village view

Walk-in closet

