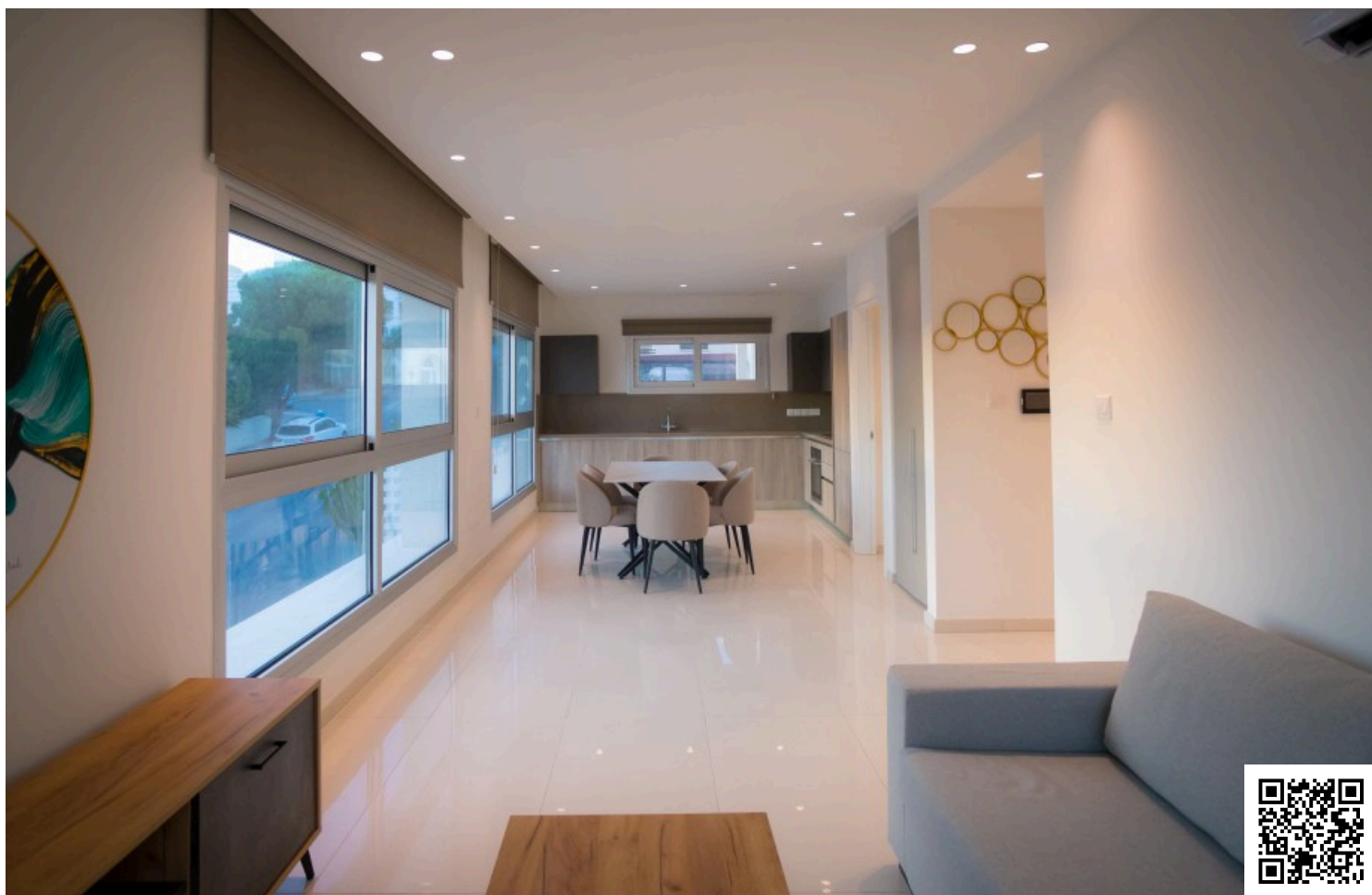


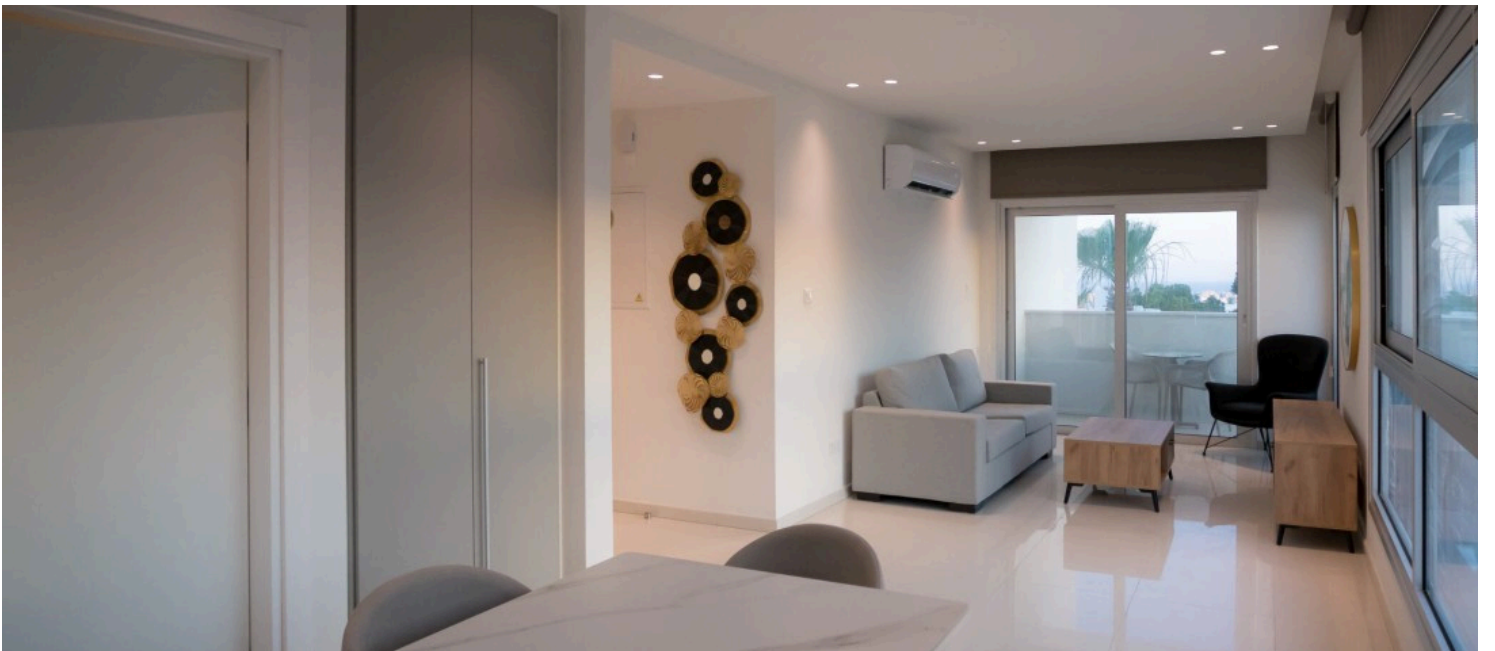
#3093

2-Bedroom Apartment, Germasogeia, Limassol

📍 Germasogeia, Limassol

€352,000 +VAT





Overview

Specifications

Bedrooms



2

Bathrooms



2

Covered



86 m²

Type	Apartment	Year of construction	2022
Covered veranda	7 m²	Energy efficiency rating	A+
Status	Key ready		

Description

A modern 2-bedroom apartment located in the desirable Paniotis area of Germasogeia, offering a perfect blend of style, comfort, and convenience. Situated in a quiet residential neighborhood with very easy access to the highway, this property ensures both privacy and excellent connectivity. The apartment features a smart layout that enhances space and functionality, making it ideal for both families and investors. Residents can also enjoy a shared rooftop garden with a BBQ area—perfect for relaxing and social gatherings while taking in the surrounding views.

Specifications:

- ? Internal area 86m2
- ? Covered verandas 7m2
- ? Shared Roof terrace 60m2

Price €352,000 +VAT

With its prime location and thoughtful design, this property presents an outstanding opportunity for comfortable living or a high-potential investment.



Additional information

Facilities

Aircondition, Central system

Parking, Covered

Solar photovoltaic panels (provision)

Storage

Features

Bright

En suite shower

Mountain view

Panoramic view

Roof garden

Sea view

Shower

Suitable for work

Village view

