

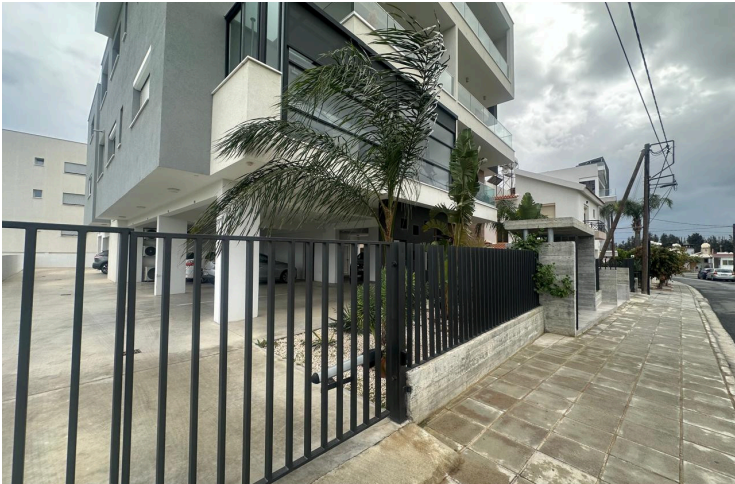
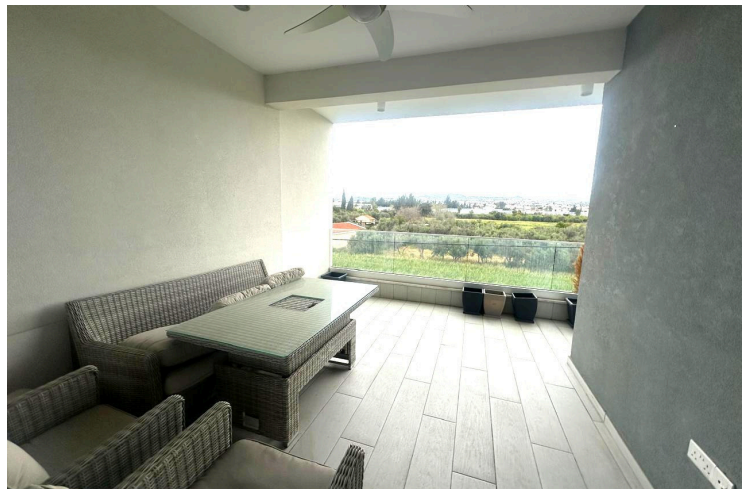
#3092

2-Bedroom Apartment, Kato Polemidia, Limassol

📍 Kato Polemidia, Limassol

€280,000





Overview

Specifications

Bedrooms

 2

Bathrooms

 2

Covered

 75 m²

Type **Apartment**

Covered veranda **20 m²**

Status **Resale**

Year of construction **2022**

Title deed **Yes**

Energy efficiency rating  **A**

Description

Introducing this 2-bedroom apartment located in the Kato Polemidia area of Limassol, ideally situated just 2 minutes from the highway and 10 minutes from the city center. Its prime location offers immediate access to schools, banks, shops, and all essential amenities, ensuring a highly convenient urban lifestyle.

The apartment comprises a comfortable living room area, a separate modern kitchen, two bedrooms, one family bathroom and a guest W/C. It also features a spacious covered veranda providing a pleasant outdoor space for relaxation.

This apartment represents an excellent opportunity for both homeowners and investors.

Specifications:

- Covered Area: 75m²

- Covered Veranda: 20m²

Price: €280.000 (No VAT)

Contact us for a viewing.



Additional information

Facilities

Aircondition, Split system

Heating, Split system

Parking, Covered

Solar water heater

Storage

Features

Balcony

Bright

Double glazing

Easy access to highway

Easy access to main roads

Elevated

Guest WC

High ceilings

Investment opportunity

Laundry room

Modern design

Near amenities

Quiet area

Spacious rooms

