

#3089

2-Bedroom Penthouse, Ypsonas, Limassol

📍 Ypsonas, Limassol

€330,000 +VAT





Overview

Specifications

Bedrooms

 2

Bathrooms

 2

Covered

 80 m²

Type **Apartment**

Covered veranda **23 m²**

Roof garden **44 m²**

Status **Under construction**

Year of construction **2027**

Energy efficiency rating  **A**

Description

Introducing this 2-bedroom penthouse ideally located in the Ypsonas area of Limassol, offering a perfect choice for those seeking a luxurious residence or investment opportunity. Featuring top-quality finishes and high-end facilities, the property exudes elegance and sophistication, making it an excellent option for upscale city living.

Situated in a quiet and serene area with easy access to the highway just 1-minute drive and only 15 minutes from Limassol city center, this penthouse combines luxury, convenience, and modern comfort. With exceptional design, amenities, and attention to detail, it offers a premium lifestyle for residents or a high-value investment opportunity.

Specifications:

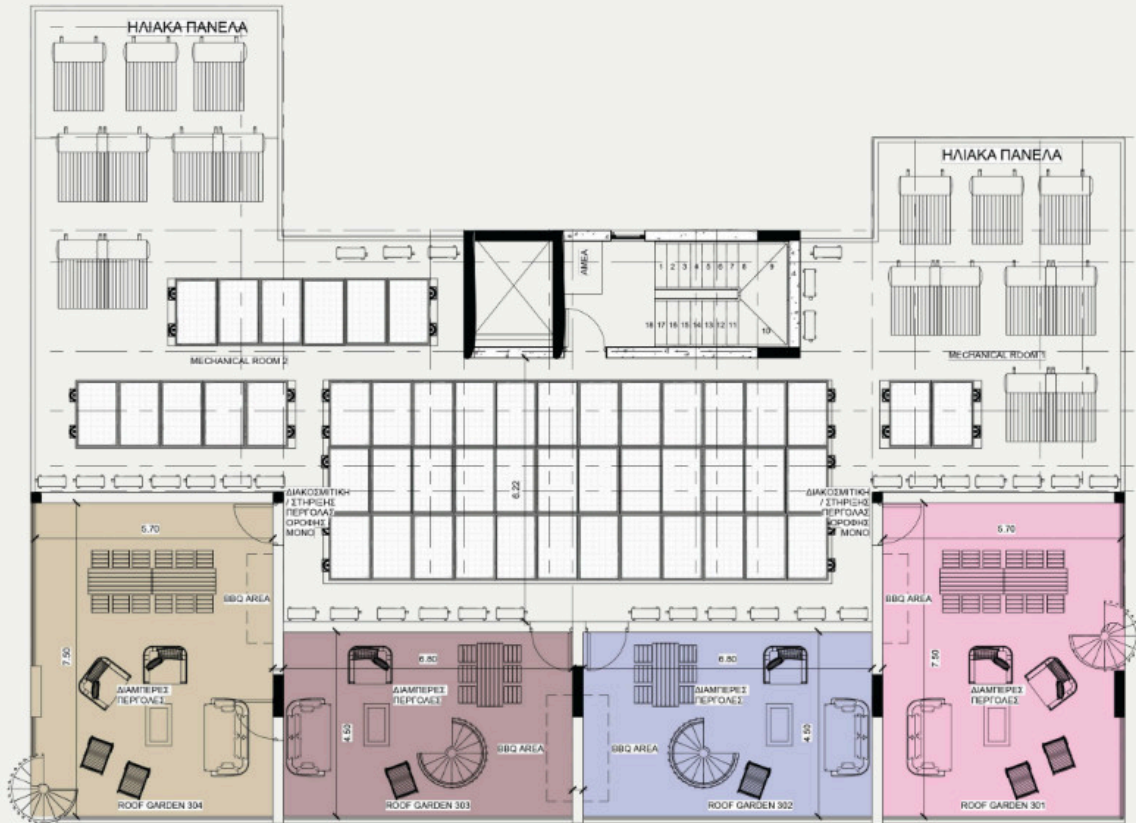
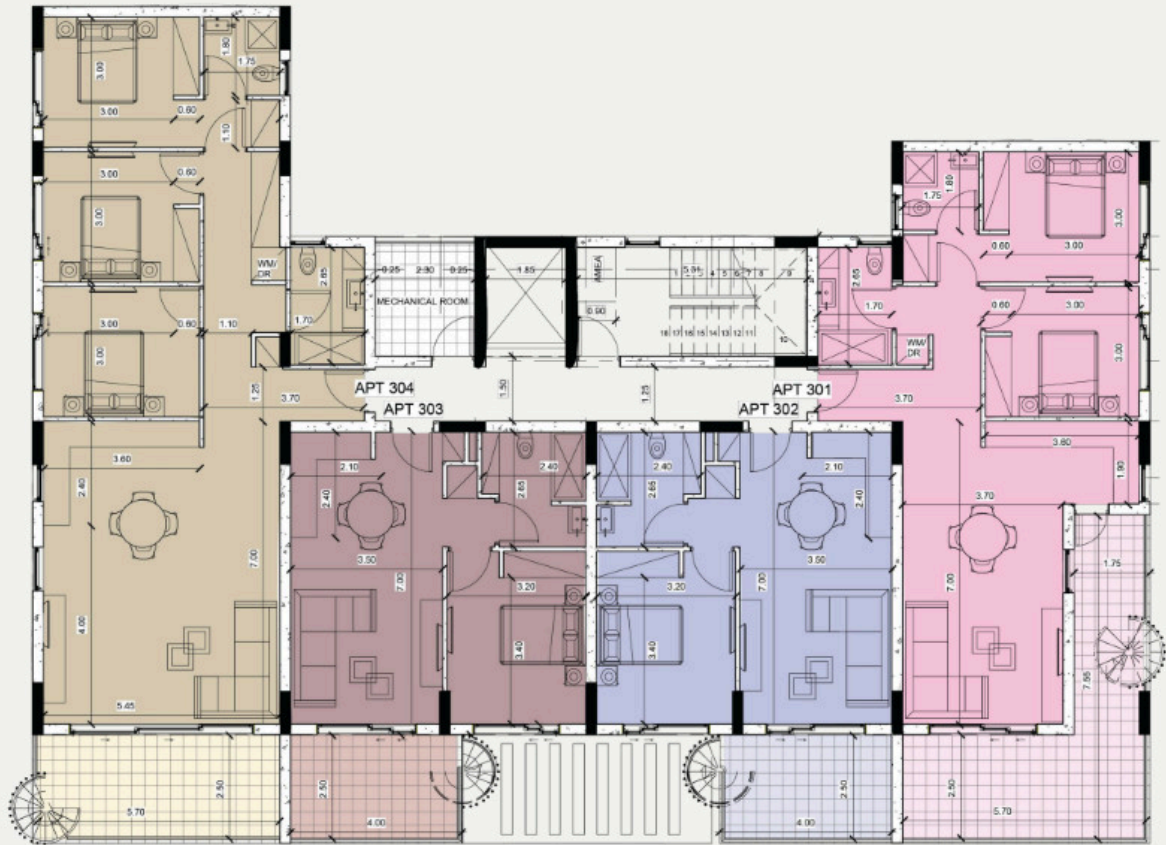
- Covered Areas: 80m²
- Covered Verandas: 23m²
- Roof Garden:44m²

Price: €330.000+VAT

Contact us for a viewing.



Floor plans



Additional information

Facilities

Aircondition, Provision

Heating, Provision

Parking, Covered

Solar water heater

Storage

Features

Balcony

Barbeque

Bright

City view

Easy access to highway

Easy access to main roads

En suite bathroom

Guest WC

High ceilings

Internal stairs

Investment opportunity

Laundry room

Luxury specifications

Modern design

Near amenities

Open plan

Roof garden

Sea view

Spacious rooms

