

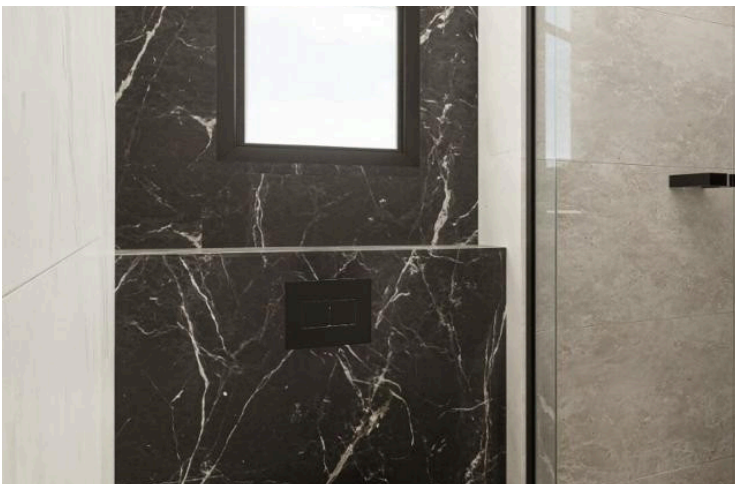
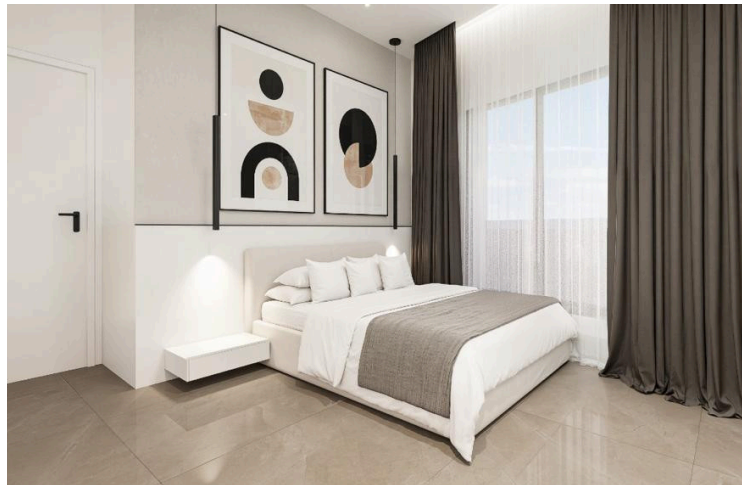
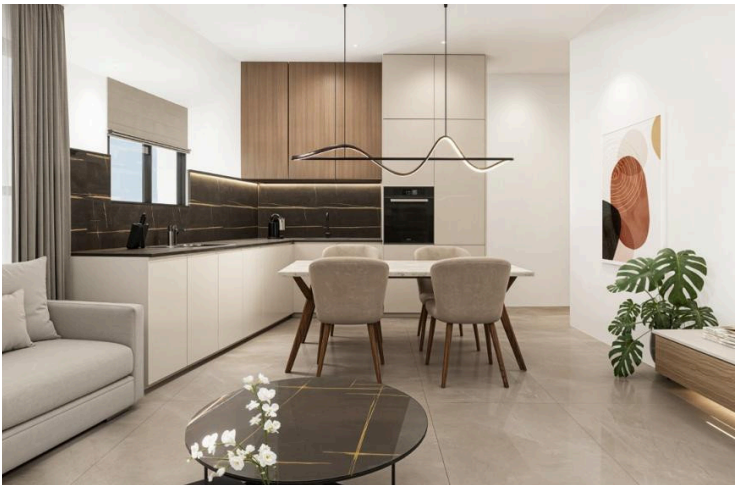
#3088

# 2-Bedroom Apartment, Parekkklisia, Limassol

📍 Parekkklisia, Limassol

€255,000 +VAT





# Overview

## Specifications

Bedrooms



2

Bathrooms



1

Covered

75 m<sup>2</sup>

Type

**Apartment**

Covered veranda

**16 m<sup>2</sup>**

Status

**Off plan**

Energy efficiency rating



## Description

Presenting an exclusive residential project of only 4 apartments in the peaceful area of Parekklesia, Limassol. Located in a quiet residential neighbourhood, this project offers privacy and a comfortable lifestyle, making it an ideal choice for both homeowners and investors.

Each apartment features a well-designed living and dining area, an open-plan kitchen, and practical indoor spaces with modern finishes. The apartment also includes a covered veranda, ideal for everyday use.

Specifications:

Covered Area: 75m<sup>2</sup>

Covered Veranda: 16m<sup>2</sup>

Price: €255.000 + VAT

Contact us for more information or to arrange a viewing.



# Additional information

## Facilities

Aircondition, Provision

Parking, Covered

Gated complex

Storage

Heating, Provision

## Features

Bright

Easy access to main roads

Modern design

Quiet area

Double glazing

High ceilings

Near amenities

Spacious rooms

Easy access to highway

Luxury specifications

Near bus route

Veranda

