

#3075

2-Bedroom Apartment, Ypsonas, Limassol

📍 Ypsonas, Limassol

€260,000 +VAT





Overview

Specifications

Bedrooms

 2

Bathrooms

 2

Covered

 80 m²

Type **Apartment**

Covered veranda **23 m²**

Status **Under construction**

Year of construction **2027**

Energy efficiency rating  **A**

Description

Introducing this 2-bedroom apartment, situated in the Ypsonas area in Limassol. This apartment is an ideal choice for those seeking a tranquil place to live or invest in. With top-notch finishes throughout, the building exudes charm and sophistication, making it a top choice for those seeking upscale city living.

Positioned in a serene area with easy access to the highway, just a quick 2-minute drive away and only 15 minutes from Limassol city centre, it offers both investors and potential buyers a luxurious and convenient lifestyle.

Specifications:

- Covered Areas: 80m²

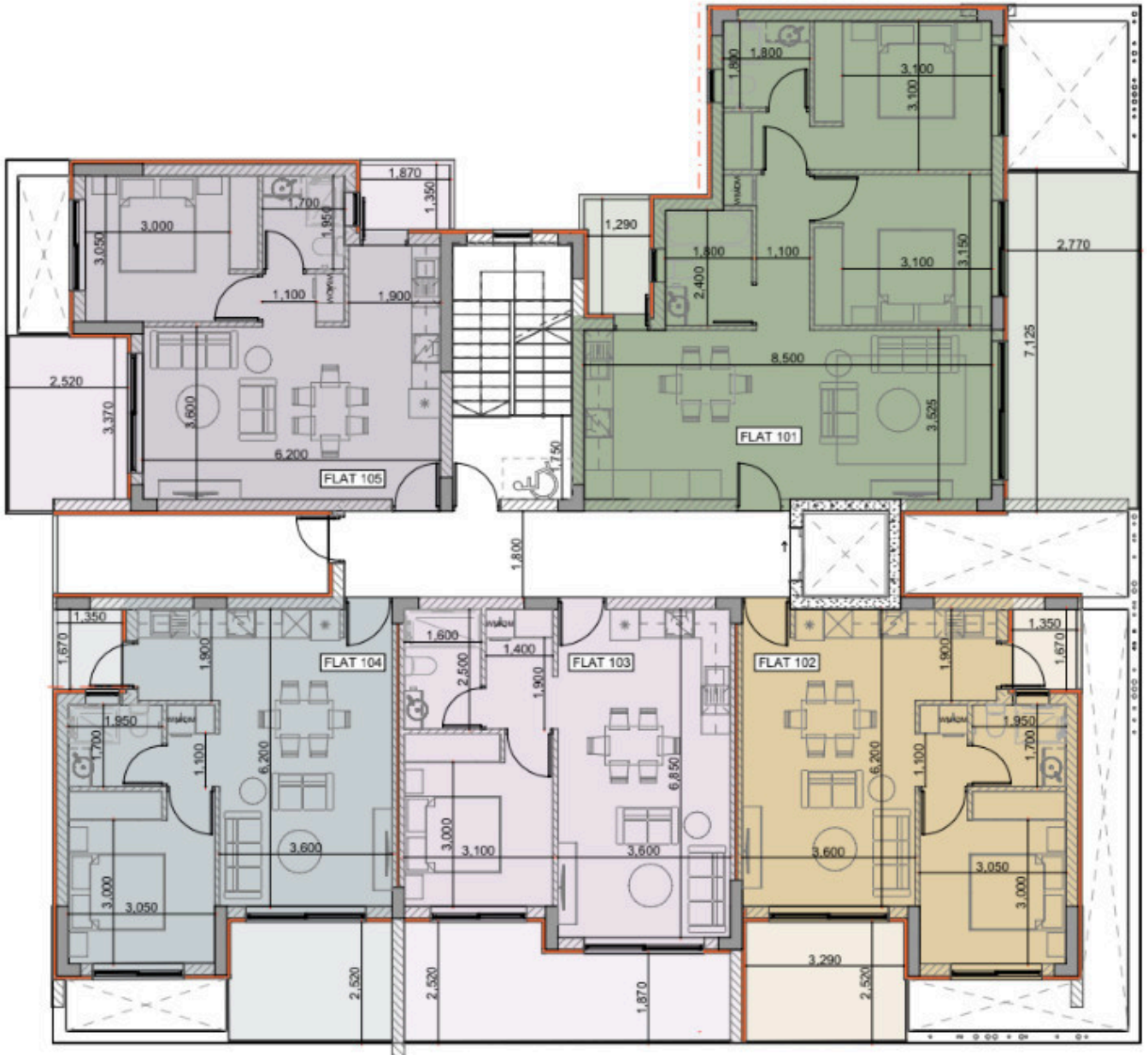
- Covered Verandas: 23m²

Price: €260.000+VAT

Contact us for a viewing.



Floor plans



Additional information

Facilities

Aircondition, Provision

Elevator

Heating, Provision

Parking, Covered

Solar water heater

Storage

Features

Balcony

Bright

Double glazing

Easy access to highway

Easy access to main roads

En suite bathroom

Guest WC

High ceilings

Investment opportunity

Laundry room

Modern design

Near amenities

Open plan

Quiet area

Spacious rooms

