

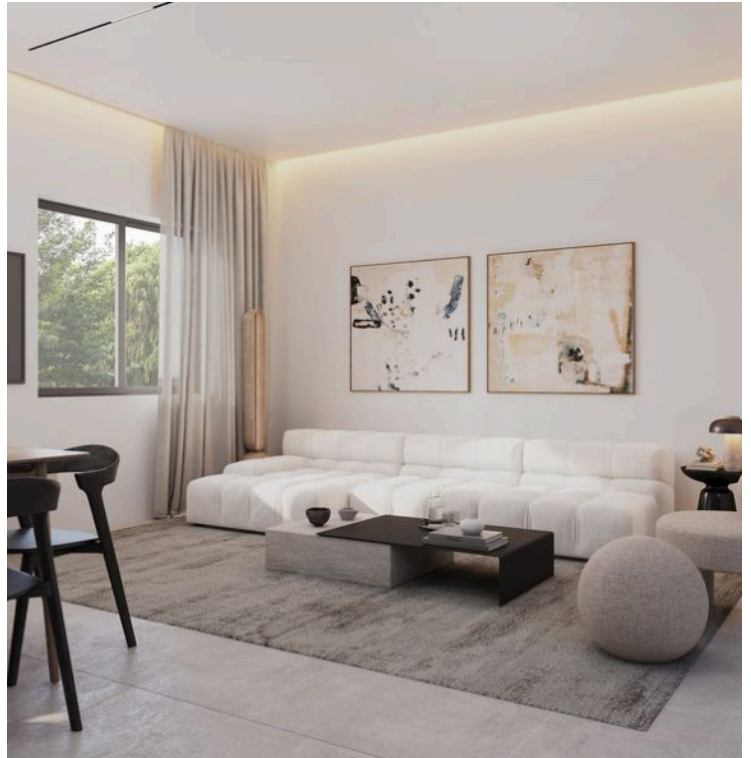
#3057

3-Bedroom Semi Detached House, Parekklesia, Limassol

📍 Parekklesia, Limassol

€485,000 +VAT





Overview

Specifications

Bedrooms

 3


Bathrooms

 3

Covered

 160 m²

Type	Semi-Detached House
Plot	116 m²
Covered veranda	6 m²
Garden	43 m²

Status	Under construction
Year of construction	2027
Energy efficiency rating	 A

Description

Introducing this 3-bedroom semi-detached house located in the Parekklesia area of Limassol, just 5 minutes from the highway and 20 minutes from the city centre. Ideal for both comfortable living and investment, the property features high-quality finishes throughout, creating a stylish and welcoming atmosphere.

The ground floor offers a spacious open-plan living and dining area seamlessly connected to a modern kitchen, along with a guest W/C, providing a functional and inviting space for everyday living.

Upstairs, the property comprises two generously sized bedrooms and a separate family bathroom. The house also includes a basement level featuring a small self-contained studio with a bedroom, bathroom, and kitchen, adding flexibility and convenience.

A lovely outdoor yard further enhances the property, offering a pleasant space for relaxation.

Specifications:

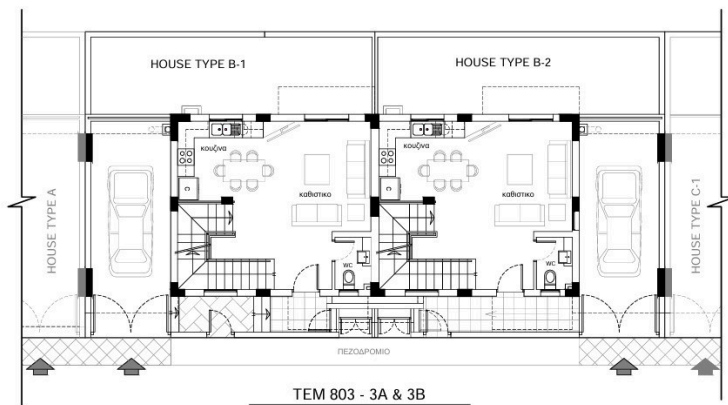
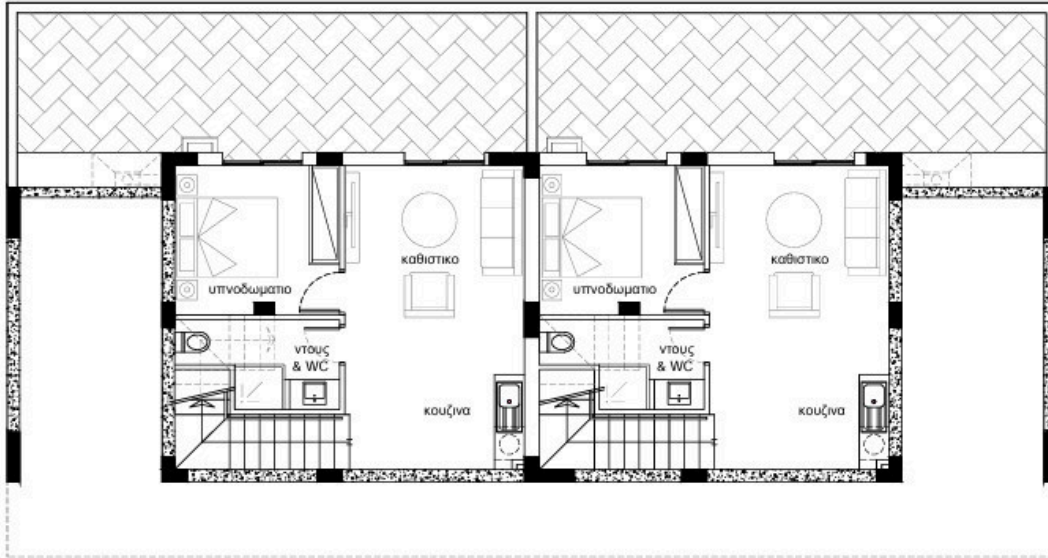
- Covered Areas: 160m²
- Covered Veranda: 6m²
- Garden: 42m²
- Plot Area: 117m²

Price: €435.000+ VAT

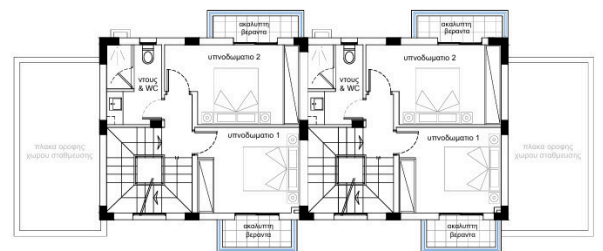
Contact us today for detailed information.



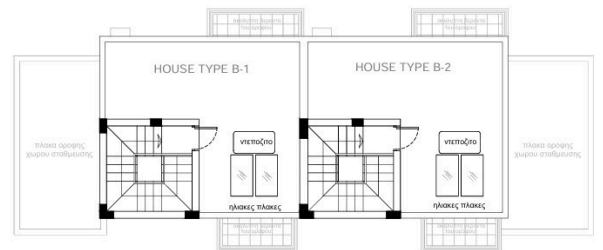
Floor plans



TEM 803 - 3A & 3B
HOUSE TYPES B-1 & B-2
ΚΑΤΟΨΗ ΙΣΟΓΕΙΟΥ



HOUSE TYPES B-1 & B-2
ΚΑΤΟΨΗ 1ου ΟΡΟΦΟΥ



HOUSE TYPES B-1 & B-2
ΚΑΤΟΨΗ 0ου ΟΡΟΦΟΥ



Additional information

Facilities

Aircondition, Provision

Landscaped garden

Solar water heater

Gated complex

Parking, Covered

Storage

Heating, Provision

Solar photovoltaic panels

Features

Alarm system

Easy access to highway

High ceilings

Modern design

Quiet area

Bright

Easy access to main roads

Investment opportunity

Near amenities

Spacious rooms

Double glazing

Guest WC

Luxury specifications

Open plan

