

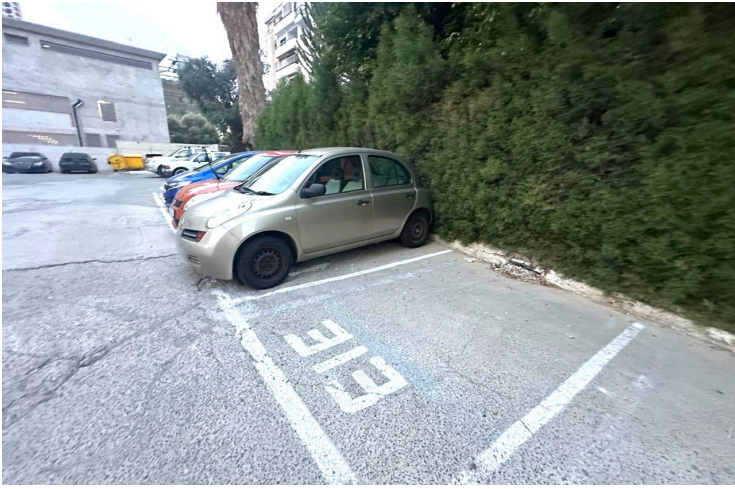
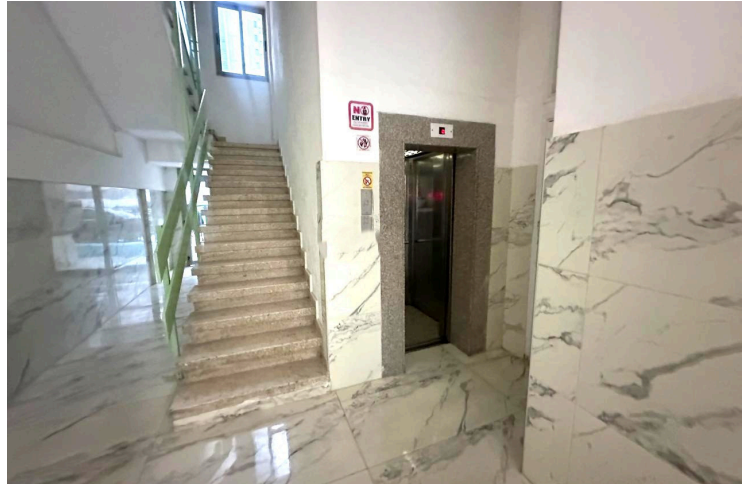
#3046

# 2-Bedroom Apartment, Neapolis, Limassol

📍 Neapolis, Limassol

€420,000





# Overview

## Specifications

Bedrooms

 2

Bathrooms

 1

Covered

 84 m<sup>2</sup>

Type	<b>Apartment</b>	Year of construction	<b>1979</b>
Covered veranda	<b>10 m<sup>2</sup></b>	Energy efficiency rating	 <b>B</b>
Status	<b>Resale</b>		

## Description

Introducing this 2-bedroom apartment in the desirable Neapolis area of Limassol, ideally situated within walking distance of the beach. Its prime location offers immediate access to schools, banks, shops, and all essential amenities, ensuring a highly convenient urban lifestyle. The property is also located near luxury developments and just a few minutes from the city centre, with direct and easy access to the beachfront.

The apartment comprises a comfortable living room area, a separate kitchen, two bedrooms, and one bathroom. It also features a covered veranda with a side sea view, providing a pleasant outdoor space for relaxation.

With its central location and practical layout, this apartment represents an excellent opportunity for both homeowners and investors seeking property in one of Limassol's most sought-after areas.

Specifications:

- Covered Area: 84m<sup>2</sup>
- Covered Veranda: 10m<sup>2</sup>

Price: €420.000 (No VAT)

Contact us for a viewing.



# Additional information

## Facilities

Aircondition, Split system

Elevator

Heating, Split system

Parking, Uncovered

Solar water heater

## Features

Balcony

Bright

City view

Easy access to highway

Easy access to main roads

High ceilings

Investment opportunity

Near amenities

Near bus route

Sea view

Spacious rooms

Walking distance to beach

