

#3038

2-Bedroom Apartment, Neapoli, Limassol

📍 Neapolis, Limassol

€735,000 +VAT





Overview

Specifications

Bedrooms



2

Bathrooms



2

Covered



84 m²

Type

Apartment

Covered veranda

16 m²

Status

Under construction

Energy efficiency rating



Description

Presenting this modern 2-bedroom apartment located in the Neapolis area of Limassol. Situated within walking distance of the beach and just a 10-minute drive from the highway, the property offers excellent convenience and accessibility.

The apartment is part of an exclusive 5-floor building that features a rooftop with a communal swimming pool, a fully equipped gym, and a barbecue area, enhancing the overall lifestyle experience.

Ideally positioned close to schools, shops, banks, and all essential amenities, this apartment offers the perfect balance of comfort and urban living. With high-quality finishes and a prime location, it offers an excellent opportunity for both end-users and investors seeking a stylish, sophisticated home in the heart of Limassol.

Specifications:

- Covered Areas: 84m²

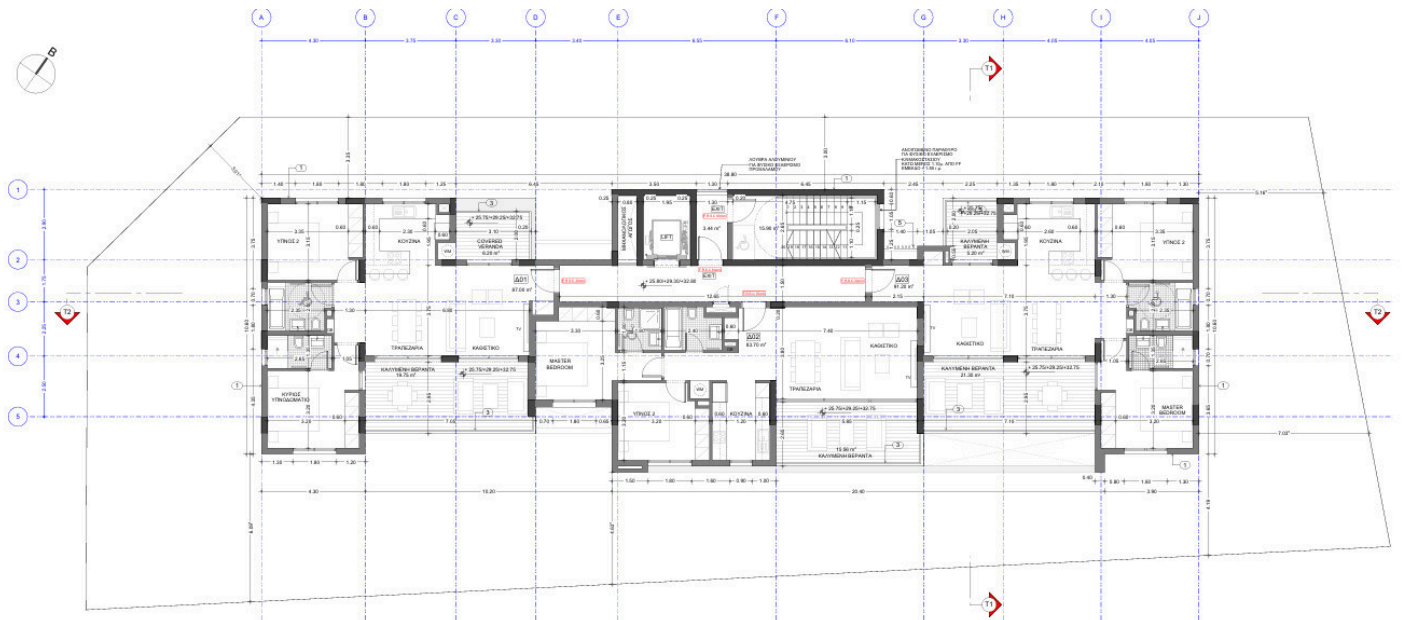
- Covered Verandas: 16m²

Price: €735.000+VAT

Contact us for a viewing.



Floor plans



ΚΑΤΩΗ 2ου-4ου ΟΡΟΦΟΥ



Additional information

Facilities

Aircondition, Split system

Heating, Underfloor

Solar photovoltaic panels

Elevator

Parking, Covered

Solar water heater

Gym

Pool, Communal

Storage

Features

Balcony

City view

Easy access to highway

En suite bathroom

Investment opportunity

Near amenities

Quiet area

Barbeque

Door screen

Easy access to main roads

Guest WC

Laundry room

Near bus route

Spacious rooms

Bright

Double glazing

Electric car charger (provision)

High ceilings

Luxury specifications

Open plan

Walking distance to beach

