

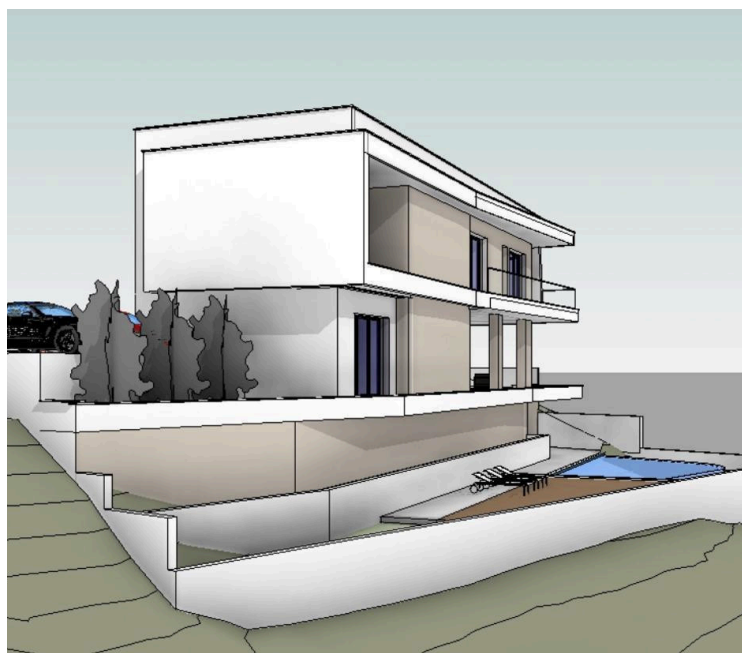
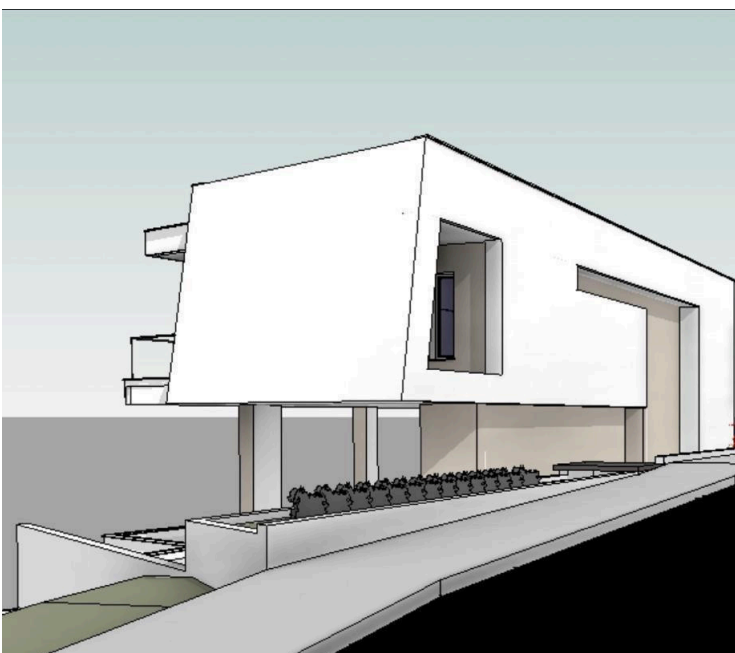
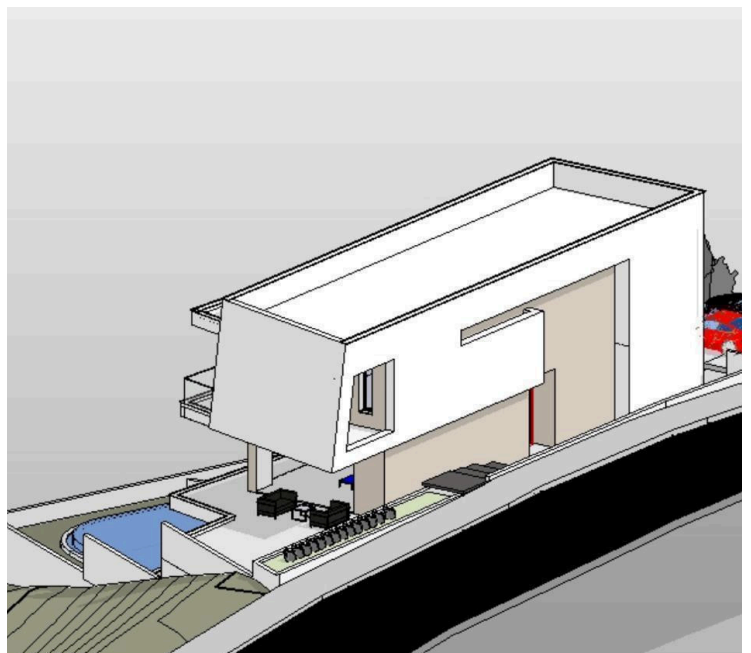
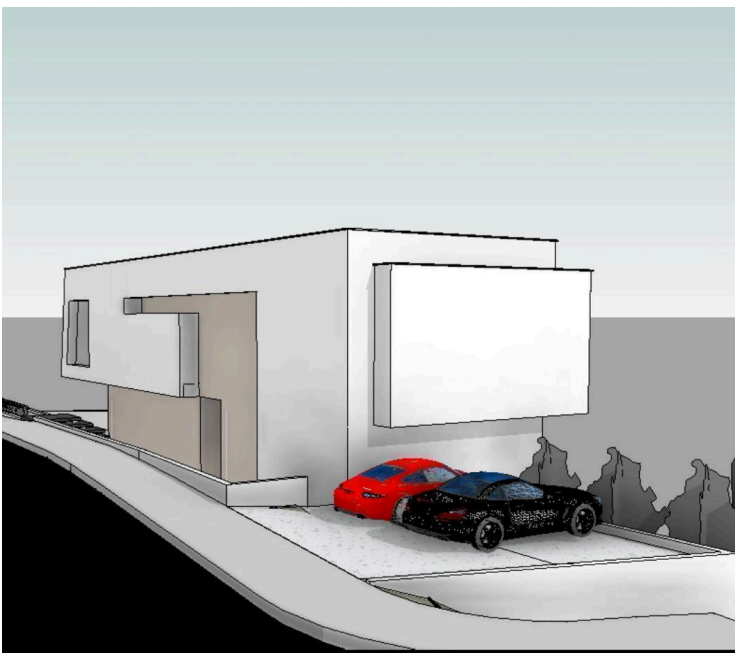
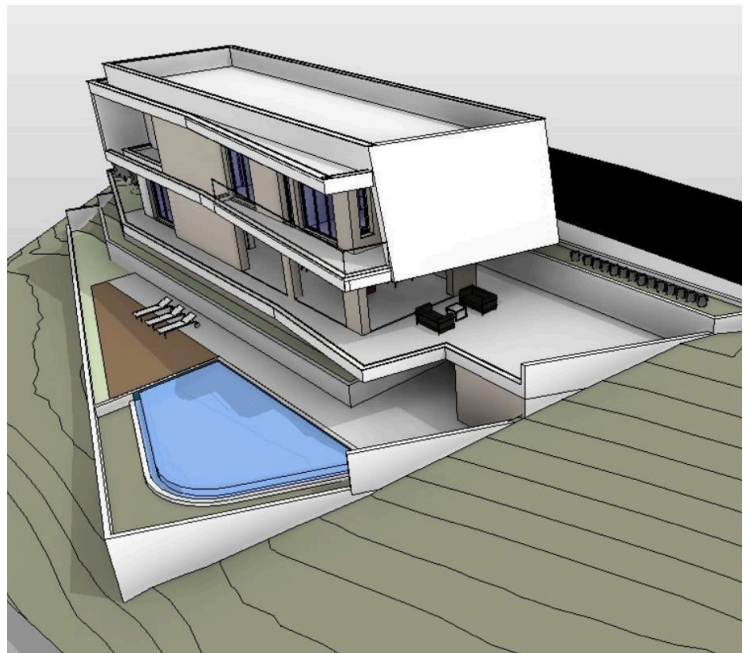
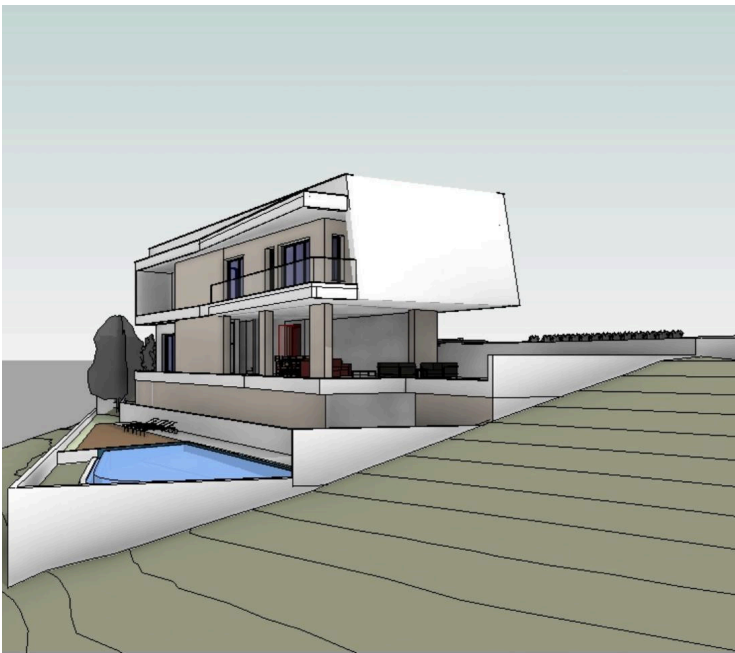
#2981

Residential Plot, Palodeia, Limassol

Palodeia, Limassol

€180,000 +VAT





Overview

Specifications

Area

 589 m²

Type	Building Plot	Title deed	Yes
------	----------------------	------------	------------

Description

Presenting this residential plot with architectural plans for a 3-bedroom villa. The plot spans a total area of 589 m², located in Palodia area of Limassol. Just a 10-minute drive from the highway and 15 minutes from the city center this residential plot offers a well-positioned opportunity with convenient access to all essential amenities.

With a building factor of 40%, the plot allows for the construction of a two-floor building with a maximum height of 8.3 meters, making it ideal for developing a residential building.

The property also benefits from a registered road, ensuring excellent accessibility. This is a unique opportunity for individuals seeking to build their future home in a desirable and well-connected location.

Specifications:

- Plot Area: 589 m²

Price: €180.000+ VAT

Contact us today!



Additional information

Features

Easy access to highway

Easy access to main roads

Near amenities

Quiet area

Planning zones

Zone	Cover factor	Build factor	Max height	Max floors	Affected percentage
H4	25%	40%	8.3 m	2	-

