

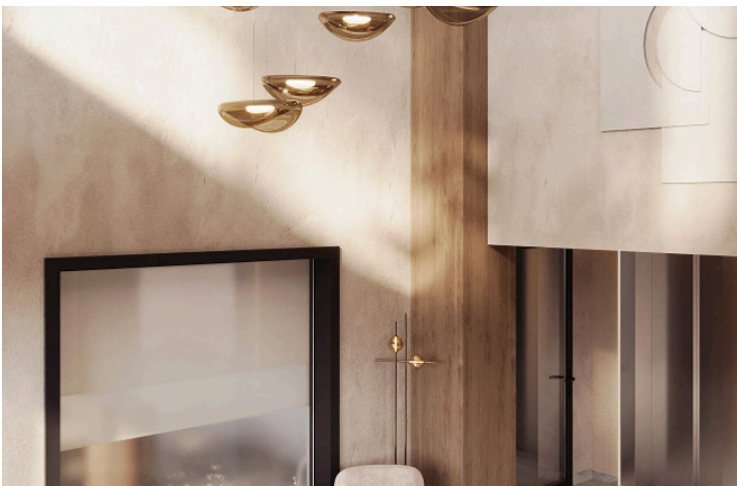
#2885

Commercial Building, Apostolou Petrou kai Pavlou, Limassol

📍 Petrou Kai Pavlou, Limassol

€5,000,000 +VAT





Overview

Specifications


Bathrooms

 10

Covered

 787 m²

Type	Commercial Building
Plot	729 m²
Covered veranda	133 m²
Roof garden	232 m²

Status	Under construction
Year of construction	2027
Energy efficiency rating	 A

Description

Presenting this elegant office building located in the Apostolou Petrou kai Pavlou area of Limassol, ideally positioned just 1 minute from the highway and less than 10 minutes from the city centre.

Situated in a highly visible and easily accessible location, the property spans five floors and also benefits from a roof garden on the top level, ideal for relaxation, informal meetings, or private use. The ground floor includes an elegant lobby area with a landscaped entrance, creating a strong first impression.

The first, second, and third floors offer spacious open-plan layouts accommodating more than 20 workstations, along with two bathrooms, a kitchen, a server room, and a large conference room. The second and third floors also include a private closed office on each level.

On the top floor, the building features a luxurious 3-bedroom penthouse comprising a spacious living room, kitchen, and dining area. All bedrooms include en-suite bathrooms, while the master bedroom also benefits from a walk-in closet. Large verandas surround the penthouse, offering generous outdoor space and enhanced comfort.

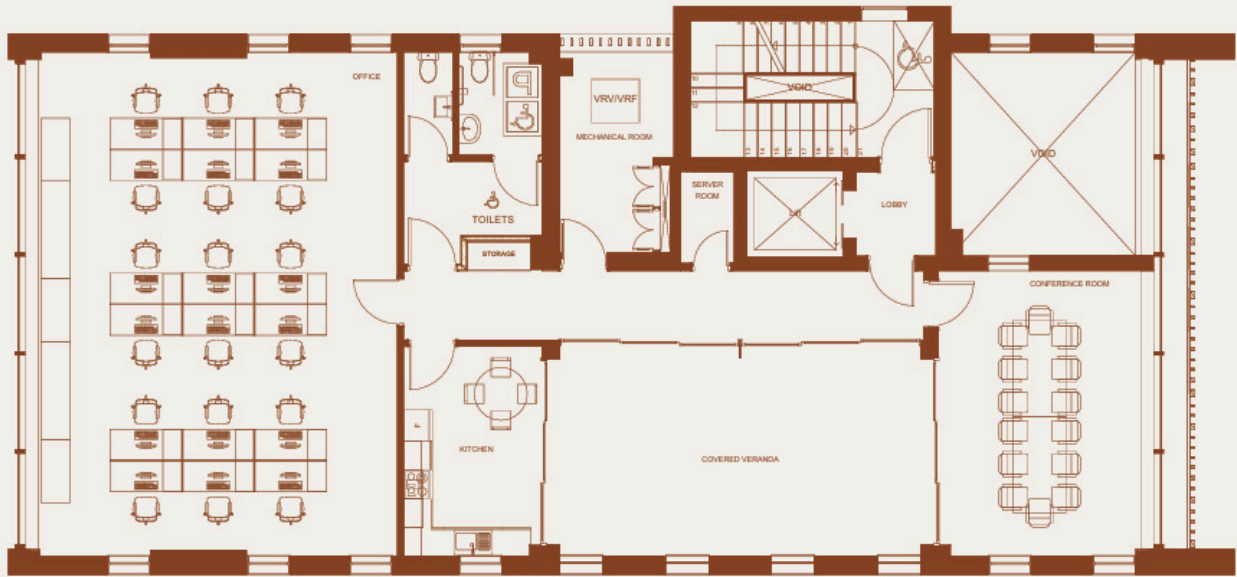
Additionally, the top level provides access to a private roof garden, further elevating the property's appeal and offering an exclusive outdoor area with versatile use potential.

Each floor benefits from four private parking spaces, ensuring convenience for staff and visitors alike.

Combining style, functionality, excellent accessibility, residential luxury, and premium outdoor areas, this property represents an outstanding opportunity for businesses or investors seeking a prestigious and versatile building in one of Limassol's prime commercial locations.



Floor plans



Additional information

Facilities

Aircondition, Split system

Elevator

Heating, Underfloor

Parking, Covered

Features

Alarm system

Business facilities

CCTV (provision)

City view

Closed offices

Conference hall

Double glazing

Easy access to highway

Easy access to main roads

Electric car charger (provision)

Excellent condition

High ceilings

Internal stairs

Kitchen

Luxury specifications

Meeting room

Near amenities

Near bus route

Raised floors

Reception

Roof garden

Server room

Spacious rooms

