

#2882

2-Bedroom Apartment, Kato Polemidia, Limassol

📍 Kato Polemidia, Limassol

€295,000 +VAT





Overview

Specifications

Bedrooms

 2

Bathrooms

 2

Covered

 77 m²

Type

Apartment

Covered veranda

20 m²

Status

Under construction

Year of construction

2027

Energy efficiency rating

 **A**

Description

Presenting this 2-bedroom apartment in the Kato Polemidia area of Limassol, just 15 minutes from the city centre and 1 minute from the highway. The building is meticulously designed with attention to detail, offering a stylish and comfortable living environment.

Situated in a quiet neighbourhood, the apartment combines elegance with convenience, close to schools, shops, banks, and essential services, making it an ideal choice for upscale urban living.

Specifications:

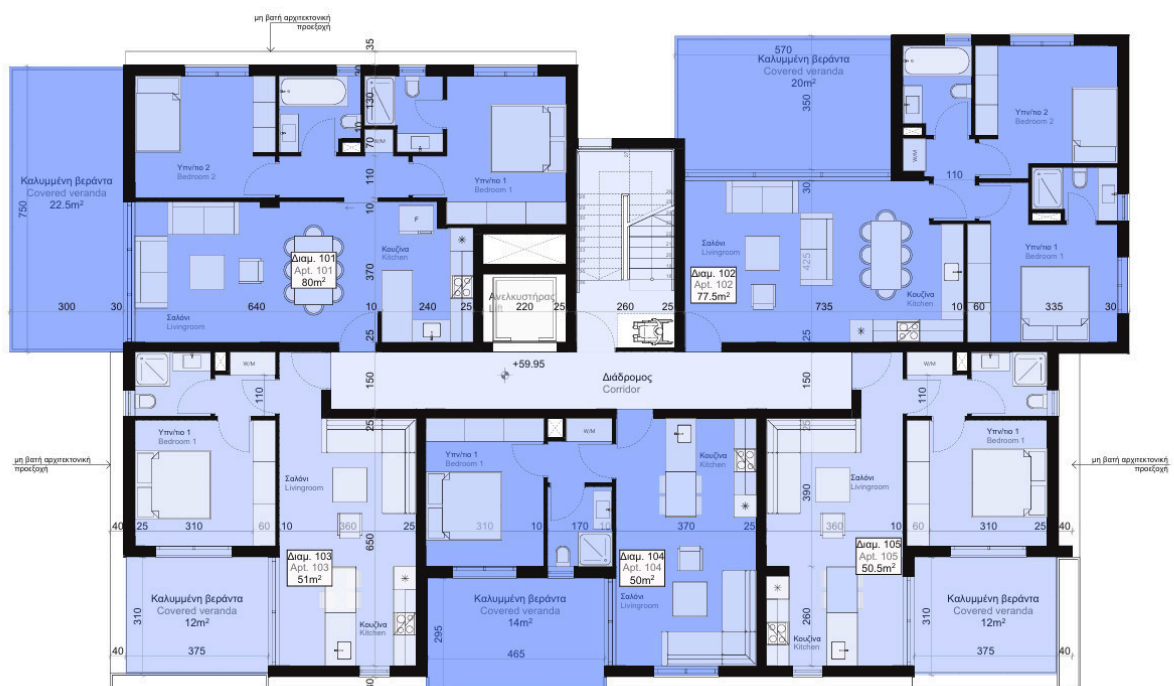
- Covered Areas: 77m²
- Covered Verandas: 20m²

Price: €295.000+VAT

Contact us for a viewing.



Floor plans



Additional information

Facilities

Aircondition, Provision
Solar water heater

Heating, Provision
Storage

Parking, Covered

Features

Balcony
Easy access to highway
En suite bathroom
Investment opportunity
Near bus route
Spacious rooms

Bright
Easy access to main roads
Guest WC
Modern design
Open plan

City view
Elevated
High ceilings
Near amenities
Quiet area

