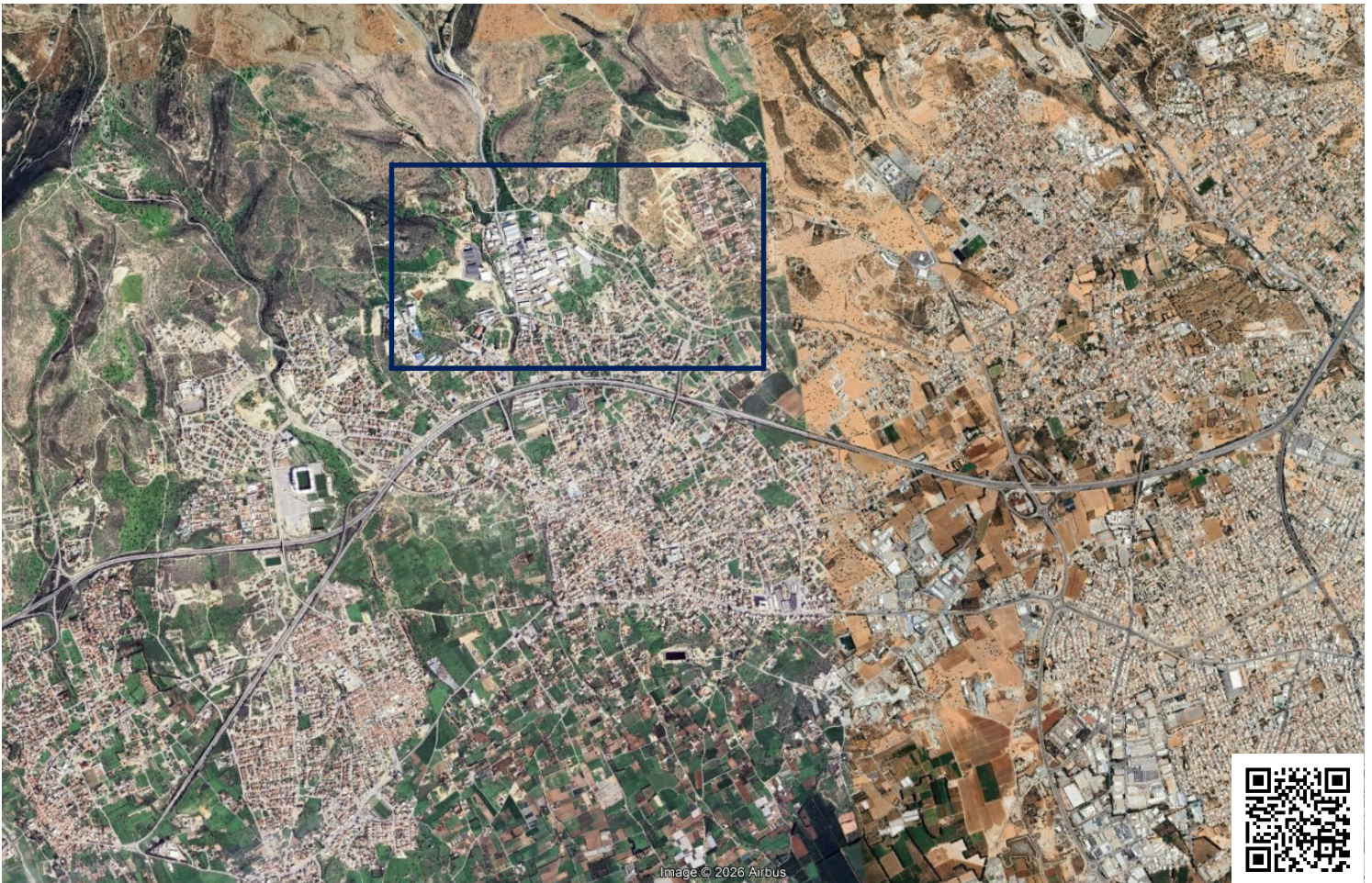


#2835

Industrial Plot, Ypsonas, Limassol

📍 Ypsonas, Limassol

€750,000



Overview

Specifications

Area

 2983 m²

Type	Building Plot	Title deed	Yes
------	----------------------	------------	------------

Description

Presenting this industrial plot located in the Ypsonas area of Limassol, offering an excellent investment opportunity. Situated approximately 20 minutes from Limassol city centre and just 2 minutes from the highway, the property enjoys outstanding accessibility and a strategic location. A registered road at the front ensures easy access.

The plot falls within the B4 industrial planning zone and spans a total area of 2,983 m². With a building density of 90%, it allows for the construction of up to two floors, making it ideal for warehouses, factories, logistics facilities, or other industrial developments.

This property is well suited for businesses and investors seeking a functional and well-connected site in Limassol's established industrial area.

Contact us for a viewing.



Additional information

Features

Easy access to highway

Easy access to main roads

Elevated

Investment opportunity

Near amenities

Prime land

Planning zones

Zone	Cover factor	Build factor	Max height	Max floors	Affected percentage
Ba4	60%	90%	-	2	-

