

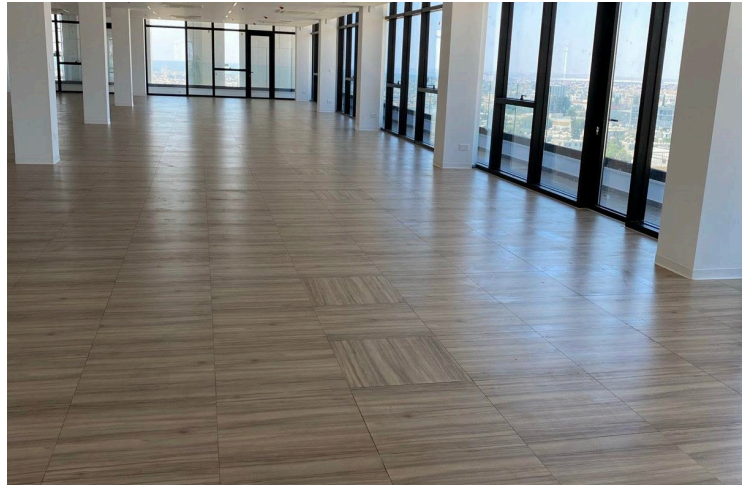
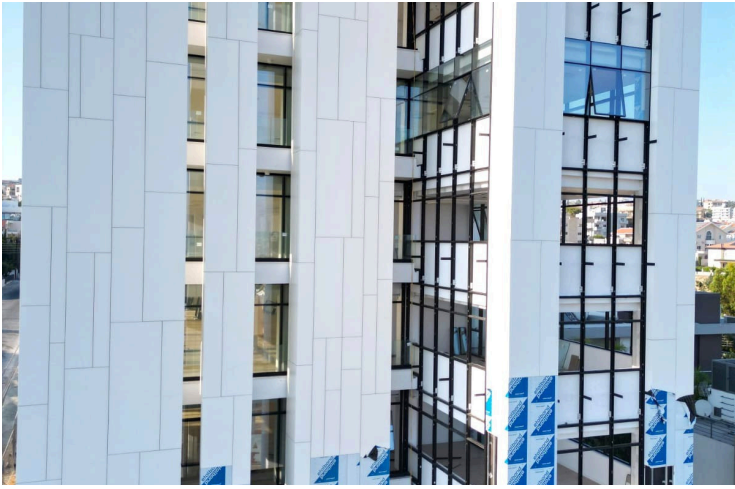
#2822

Commercial Office, Agia Fyla, Limassol

📍 Agia Fyla, Limassol

€5,300,000 +VAT





Life Realty®



Overview

Specifications

Bathrooms

 6

Covered


 466 m²

Type **Commercial Building**

Covered veranda **83 m²**

Status **Key ready**

Year of construction **2025**

Energy efficiency rating  **A**

Description

Presenting this ultra-modern office space located in the Agia Fyla area of Limassol. Ideally positioned just 10 minutes from the city centre, it offers the perfect balance of accessibility and prestige.

Housed in a newly built, high-tech building, the office features a flexible open-plan layout designed to maximize efficiency and functionality. Premium finishes and thoughtful design create a professional and elegant working environment, making it an excellent choice for businesses seeking an inspiring space to grow and succeed. The office also boasts a large covered veranda with panoramic views, as well as 25 private parking spaces it also has access to a roof garden.

This is a rare opportunity to establish your company in one of Limassol's most exclusive business addresses.

Specifications:

- Office Area: 466m²

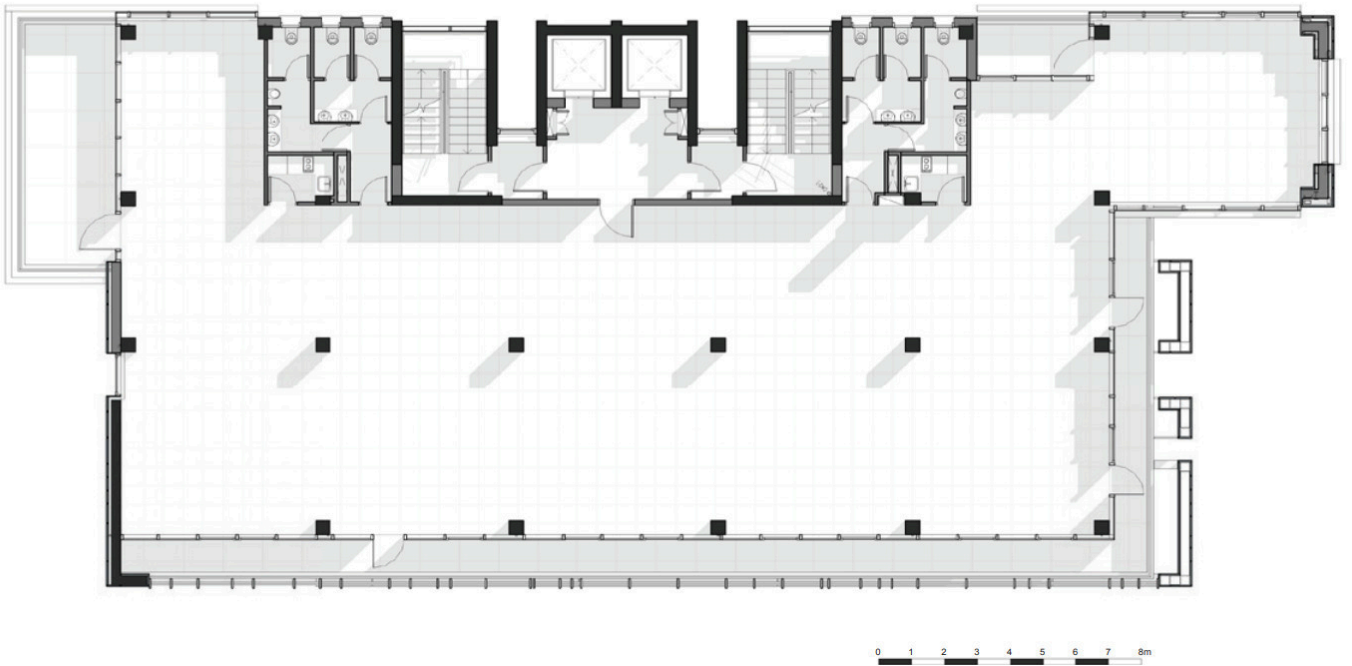
- Covered Veranda: 83m²

Price: €5.300.000+VAT

Contact us for a viewing.



Floor plans



Additional information

Facilities

Aircondition, Split system

Elevator

Heating, Split system

Parking, Covered

Solar photovoltaic panels

Features

Alarm system

Business facilities

CCTV

City view

Conference hall

Double glazing

Easy access to highway

Easy access to main roads

Excellent condition

High ceilings

Internal stairs

Kitchen

Lobby

Lounge area

Luxury specifications

Near amenities

Near bus route

Near public transport

Panoramic view

Raised floors

Reception

Roof garden

Sea view

Spacious rooms

