

#2766

# 2-Bedroom Penthouse, Germasogeia, Limassol

📍 Germasogeia, Limassol

€490,000 +VAT







# Overview

## Specifications

Bedrooms


 2

Bathrooms

 2

Covered

 85 m<sup>2</sup>

Type	Apartment	Status	Under construction
Covered veranda	23 m <sup>2</sup>	Energy efficiency rating	 A
Roof garden	32 m <sup>2</sup>		

## Description

Introducing this elegant 2-bedroom penthouse, ideally situated in the highly sought-after Germasogeia area of Limassol. Just 15 minutes from the city centre and 2 minutes from the highway, the property offers both convenience and proximity to essential amenities.

The penthouse features a private rooftop, perfect for relaxing while enjoying stunning city and sea views. Located near schools, banks, and markets, it combines luxury, comfort, and accessibility. Finished to a high standard and equipped with premium facilities, this property offers a unique opportunity for those seeking an upscale, sophisticated lifestyle.

Specifications:

- Covered Areas: 85m<sup>2</sup>
- Covered Verandas: 23m<sup>2</sup>
- Roof Garden: 32m<sup>2</sup>

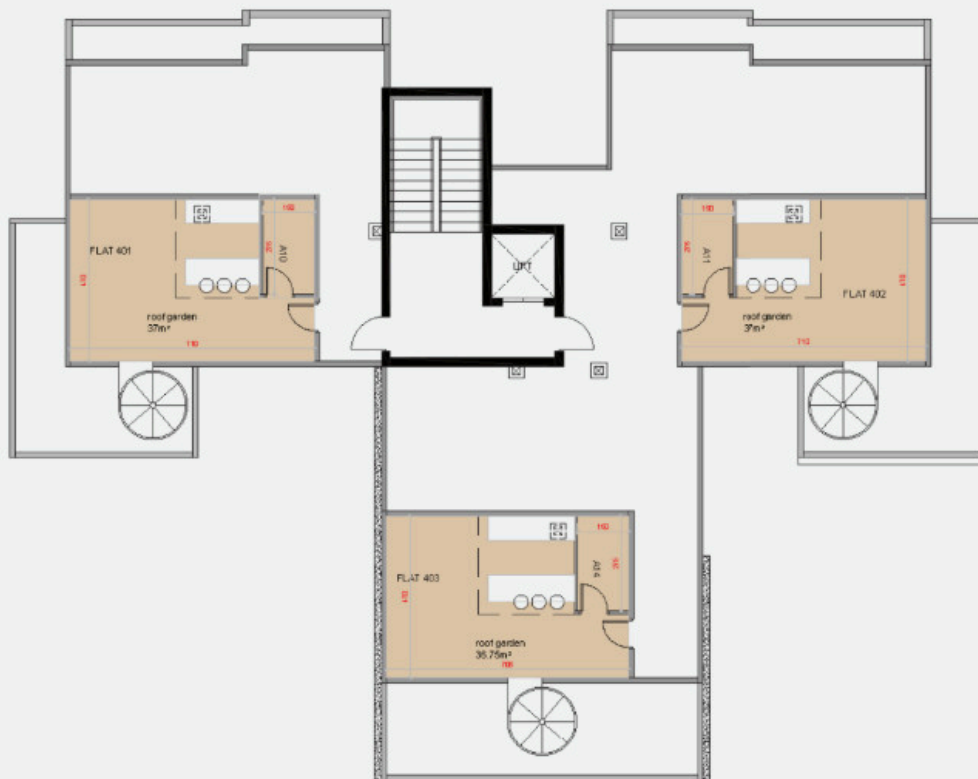
Price: €490.000+VAT

Contact us for a viewing.





# Floor plans



# Additional information

## Facilities

Aircondition, Provision

Parking, Covered

Elevator

Solar water heater

Heating, Underfloor

Storage

## Features

Balcony

Door screen

Easy access to main roads

Guest WC

Laundry room

Near bus route

Roof garden

Bright

Double glazing

Elevated

High ceilings

Luxury specifications

Open plan

Spacious rooms

City view

Easy access to highway

En suite bathroom

Investment opportunity

Near amenities

Quiet area

