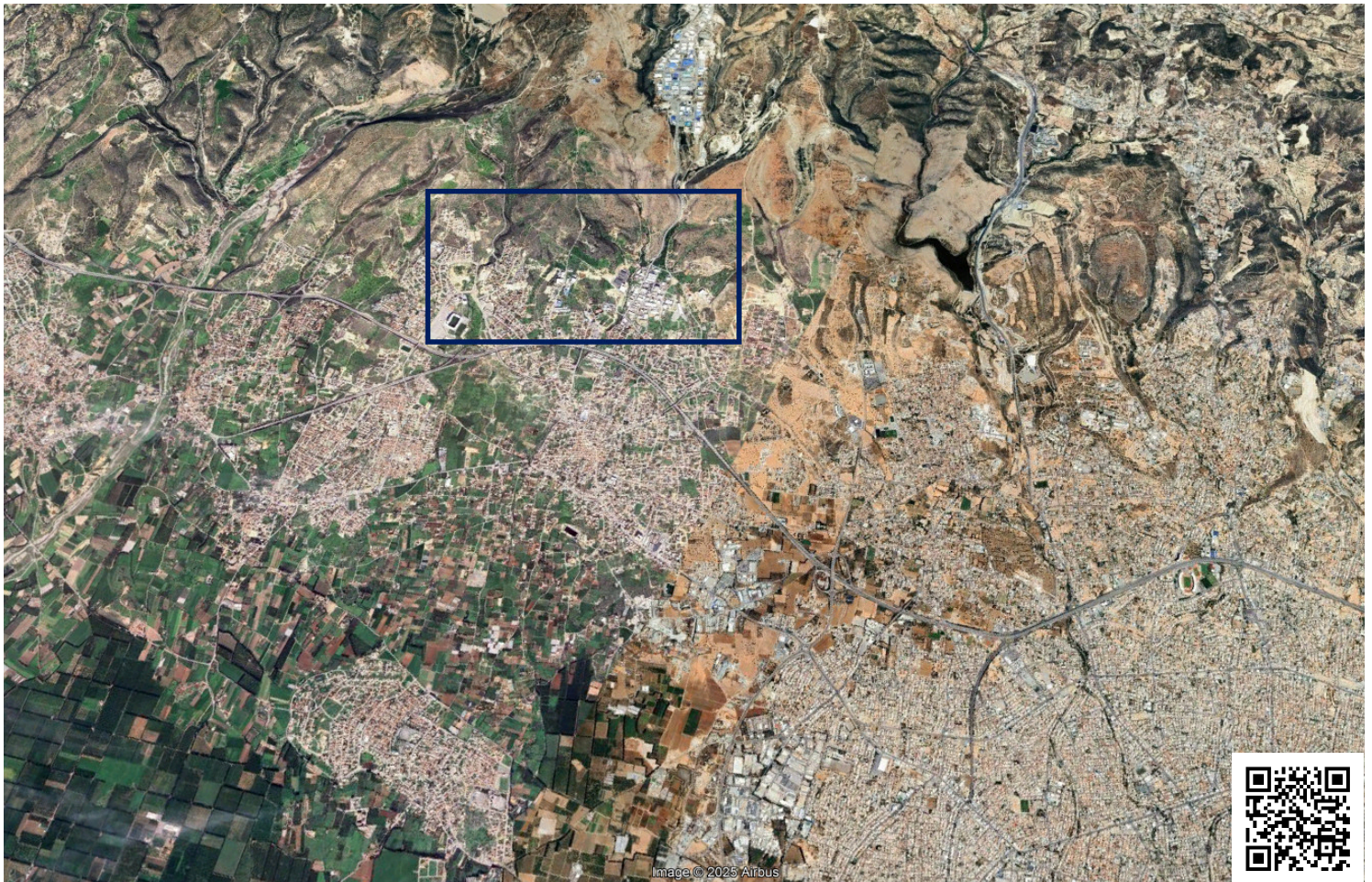


#2759

Residential Field, Ypsonas, Limassol

📍 Ypsonas, Limassol

€1,600,000 +VAT



Overview

Specifications

Area

 **7024 m²**

Type

Field

Title deed

Yes

Description

Introducing this exceptional residential field in the Ypsonas area of Limassol, spanning a total area of 7.024 m². Ideally located just 2 minutes from the highway and 15 minutes from Limassol city centre, the property benefits from a registered road at the front.

The field falls within the residential zone Ka7, with 80% building density and 45% coverage, allowing construction up to 3 floors with a maximum height of 13.5 meters.

This property presents a rare and highly attractive opportunity for investors and developers seeking to create a luxury residential project.

Contact us for a viewing.



Additional information

Features

Easy access to highway	Easy access to main roads	Elevated
Investment opportunity	Near amenities	Prime land
Quiet area		

Planning zones

Zone	Cover factor	Build factor	Max height	Max floors	Affected percentage
Ka7	45%	80%	13.5 m	3	-

