

#2736

2-Bedroom Apartment, Kato Polemidia, Limassol

 Kato Polemidia, Limassol

€345,000 +VAT





Overview

Specifications

Bedrooms

 2

Bathrooms

 2

Covered

 82 m²

Type

Apartment

Covered veranda

19 m²

Status

Under construction

Year of construction

2027

Energy efficiency rating

 **A**

Description

Presenting this 2-bedroom apartment in the Kato Polemidia area of Limassol, just 10 minutes from the city centre and 5 minutes from the highway. The building is meticulously designed with attention to detail, offering a stylish and comfortable living environment.

Situated in a quiet neighbourhood, the apartment combines elegance with convenience, close to schools, shops, banks, and essential services, making it an ideal choice for upscale urban living.

Specifications:

- Covered Areas: 82m²

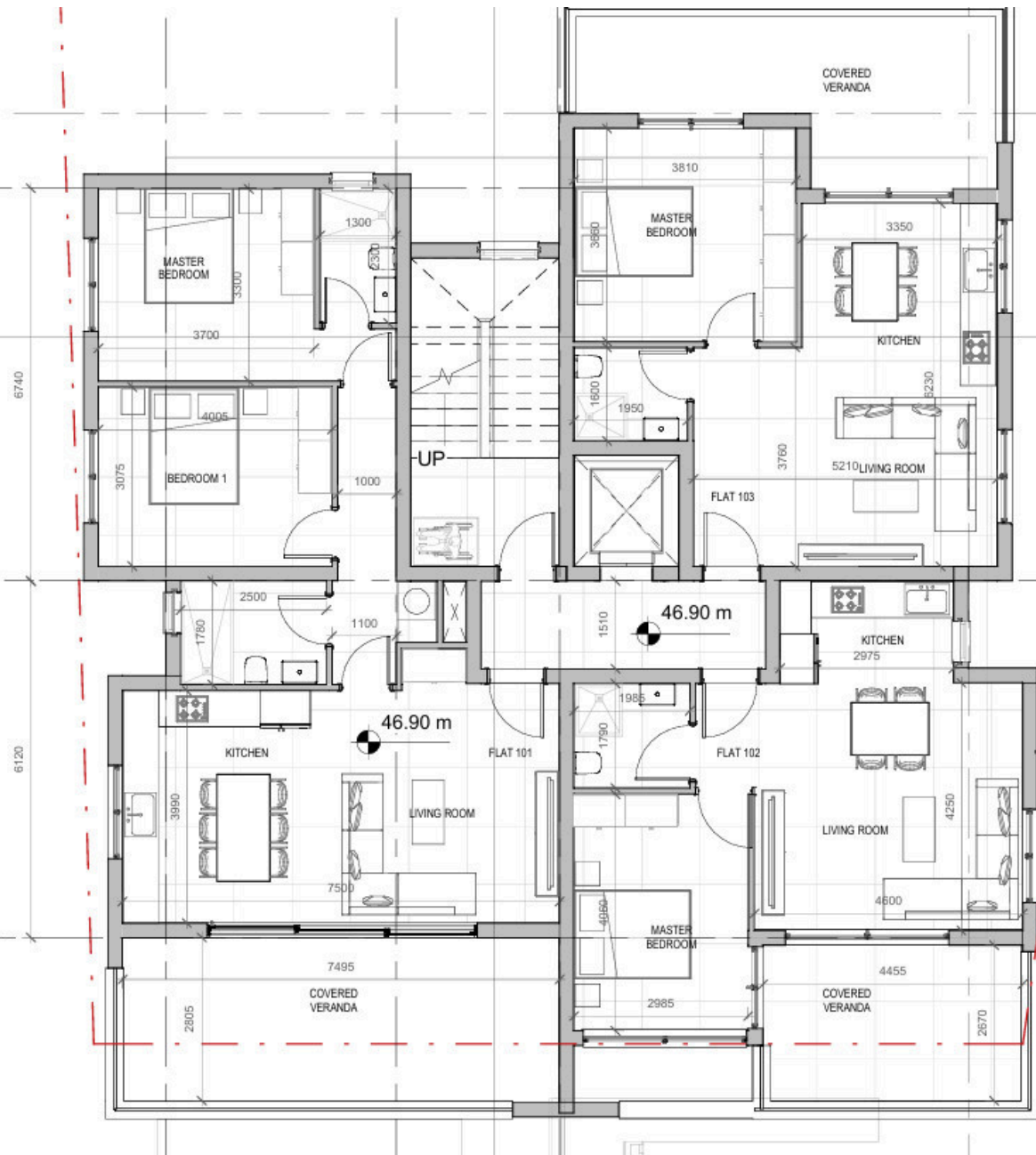
- Covered Verandas: 19m²

Price: € 345.000+VAT

Contact us for a viewing.



Floor plans



Additional information

Facilities

Aircondition, Provision

Landscaped garden

Storage

Elevator

Parking, Covered

Heating, Provision

Solar water heater

Features

Balcony

Double glazing

En suite bathroom

High ceilings

Modern design

Quiet area

Bright

Easy access to highway

Garden

Investment opportunity

Near amenities

Spacious rooms

City view

Easy access to main roads

Guest WC

Laundry room

Open plan

