

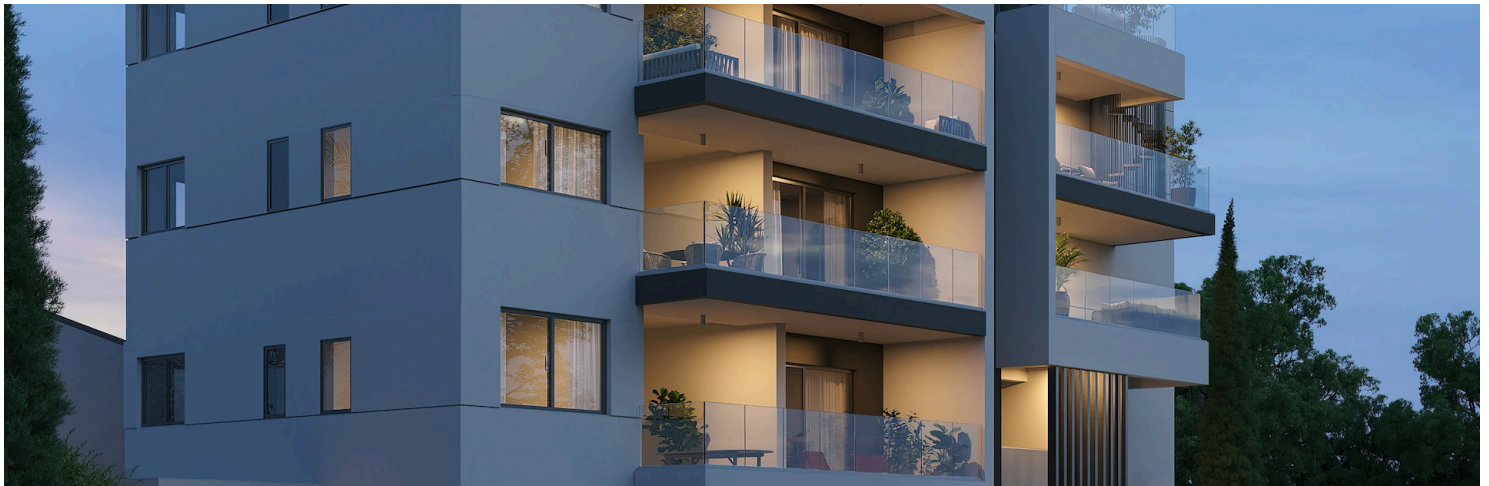
#2734

# 2-Bedroom Penthouse, Ypsonas, Limassol

📍 Ypsonas, Limassol

€355,000 +VAT





# Overview

## Specifications

Bedrooms


 2

Bathrooms

 2

Covered

 79 m<sup>2</sup>

Type	Apartment	Status	Under construction
Covered veranda	12 m <sup>2</sup>	Energy efficiency rating	 A
Roof garden	30 m <sup>2</sup>		

## Description

Introducing this two-bedroom penthouse ideally located in the Ypsonas area of Limassol, offering a perfect choice for those seeking a luxurious residence or investment opportunity. Featuring top-quality finishes and high-end facilities, the property exudes elegance and sophistication, making it an excellent option for upscale city living.

Situated in a quiet and serene area with easy access to the highway just a 2-minute drive and only 15 minutes from Limassol city center, this penthouse combines luxury, convenience, and modern comfort. With exceptional design, amenities, and attention to detail, it offers a premium lifestyle for residents or a high-value investment opportunity.

Specifications:

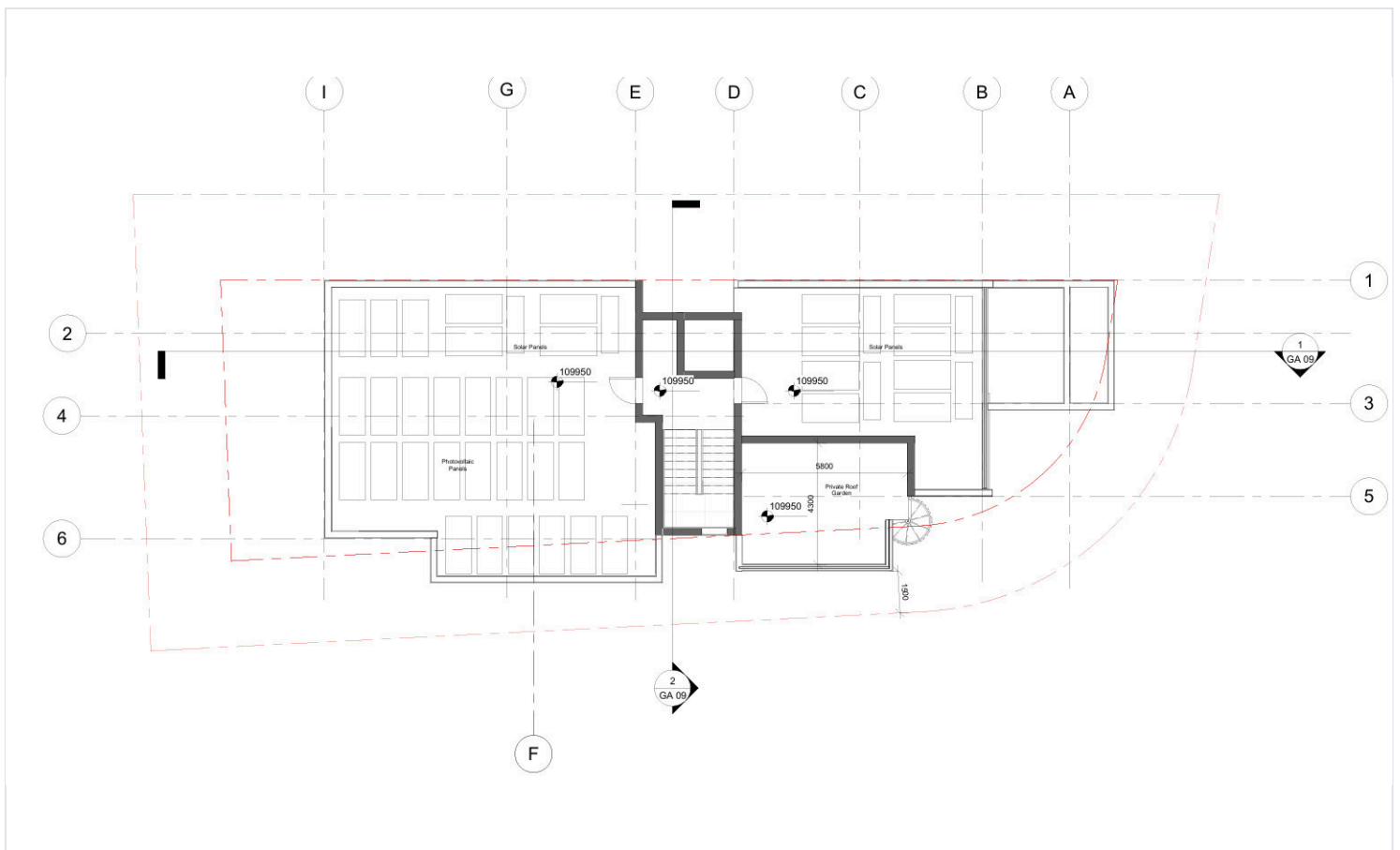
- Covered Areas: 79m2
- Covered Verandas: 12m2
- Uncovered Verandas: 30m2

Price: €355.000+VAT

Contact us for a viewing.



# Floor plans



# Additional information

## Facilities

Aircondition, Provision

Parking, Covered

Elevator

Solar photovoltaic panels

Heating, Split system

Storage

## Features

Balcony

Double glazing

En suite bathroom

Modern design

Quiet area

Bright

Easy access to highway

Guest WC

Near amenities

Spacious rooms

City view

Easy access to main roads

High ceilings

Open plan

