

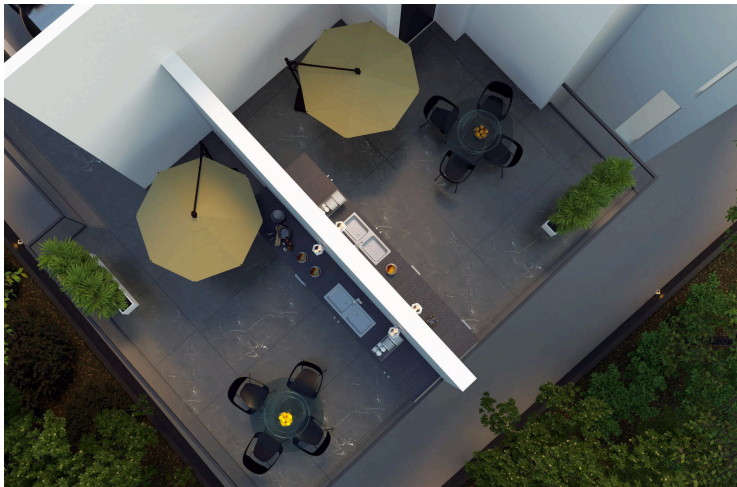
#2727

1-Bedroom Apartment, Kato Polemidia Limassol

📍 Kato Polemidia, Limassol

€180,000 +VAT





Overview

Specifications

Bedrooms



1

Bathrooms




1

Covered



55 m²

Type	Apartment	Year of construction	2027
Covered veranda	15 m ²	Energy efficiency rating	 A
Status	Under construction		

Description

Presenting this impressive three-floor building located in the upcoming area of Kato Polemidia in Limassol. Conveniently situated just a short 2-minute drive from the highway and less than 15 minutes from Limassol city centre, this property offers easy access to a plethora of amenities. Designed and constructed with careful attention to detail, it appeals to both discerning investors and potential buyers.

Nestled in a tranquil neighbourhood, these penthouses promise a luxurious and convenient lifestyle, boasting outstanding features and top-notch amenities, ensuring a life of sophistication and comfort. It is close to schools, shops, banks, and other essential services, making it an ideal choice for those seeking a quality urban living experience.

Penthouses Specifications:

- Covered Areas: 62m2
 - Covered Verandas: 15m2
- Price: €180.000+VAT



Additional information

Facilities

Aircondition, Split system

Parking, Covered

Solar photovoltaic panels
(provision)

Elevator

Pool, Private

Solar water heater

Heating, Provision

Solar photovoltaic panels

Storage

Features

Balcony

City view

Easy access to main roads

Guest WC

Laundry room

Near amenities

Roof garden

Barbeque

Double glazing

Elevated

High ceilings

Luxury specifications

Open plan

Shutters, electric (provision)

Bright

Easy access to highway

En suite bathroom

Investment opportunity

Modern design

Quiet area

Spacious rooms

