

#2682

Commercial Building, Kato Polemidia, Limassol

 Kato Polemidia, Limassol

€4,500,000 +VAT





Overview

Specifications


Bathrooms

 8

Covered

 730 m²

Type	Commercial Building
Plot	526 m²
Covered veranda	88 m²
Basement	429 m²

Roof garden	200 m²
Status	Under construction
Energy efficiency rating	 A

Description

Presenting this brand new four-story office building located in the Kato Polemidia area of Limassol, combining modern design, premium finishes, and functionality. Ideally situated just 10 minutes from the city centre and 2 minutes from highway access, it offers excellent connectivity and proximity to banks, schools, and shops.

The building comprises a basement, ground floor, and mezzanine, followed by a first floor with spacious office areas, a kitchen, and bathrooms. The second floor features a three-bedroom apartment, which can also be utilised as additional office space. A roof garden complements the property, providing an ideal space for meetings, events, or employee relaxation.

This property is a ready-to-use, high-spec office building, ideally suited for startups, professionals, and established businesses seeking a modern workspace in Limassol.

Specifications:

Basement:

Covered Area: 429m²

Ground Floor:

- Covered Area: 220m²

Mezzanine:

- Covered Area: 114m²

First Floor:

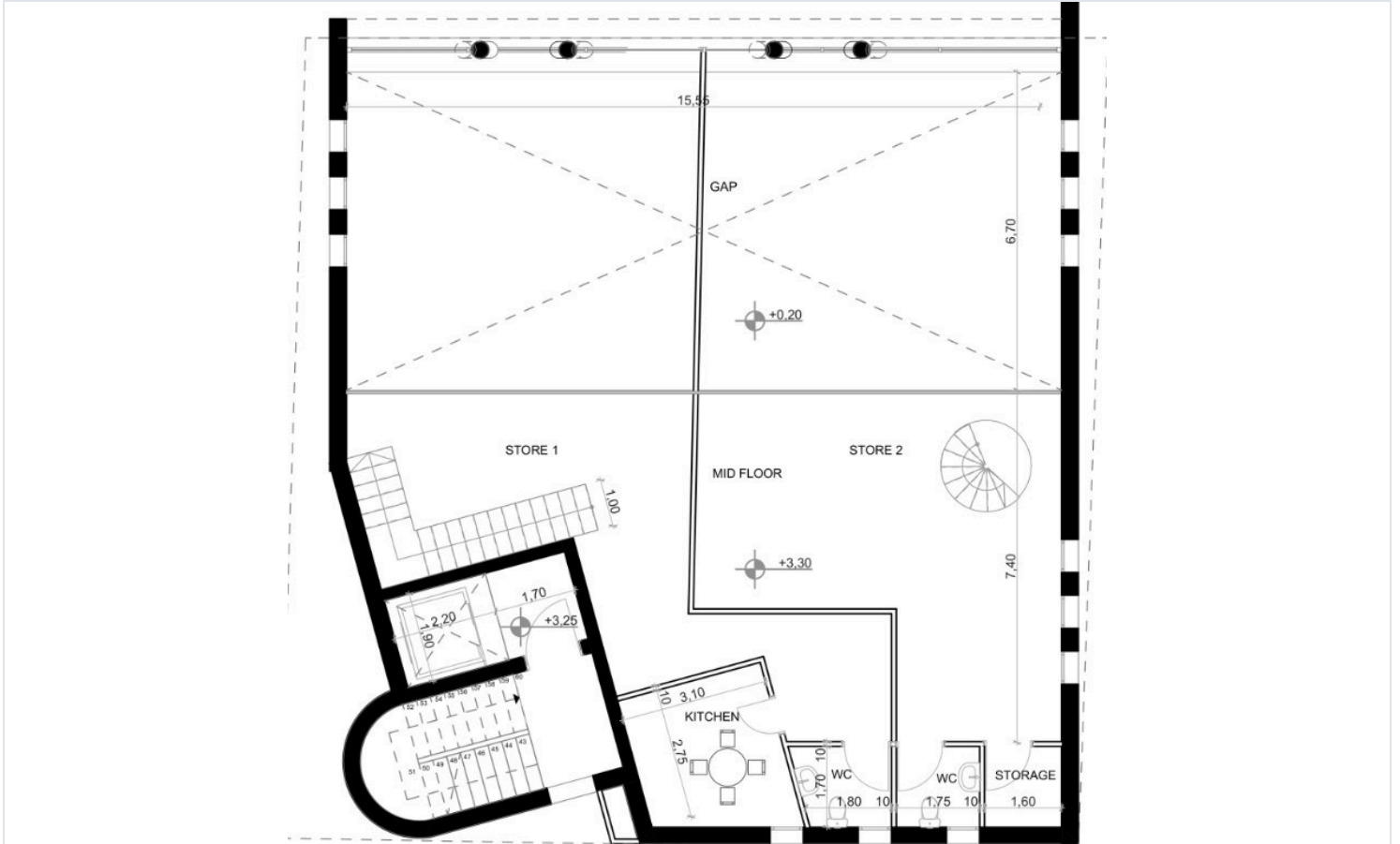
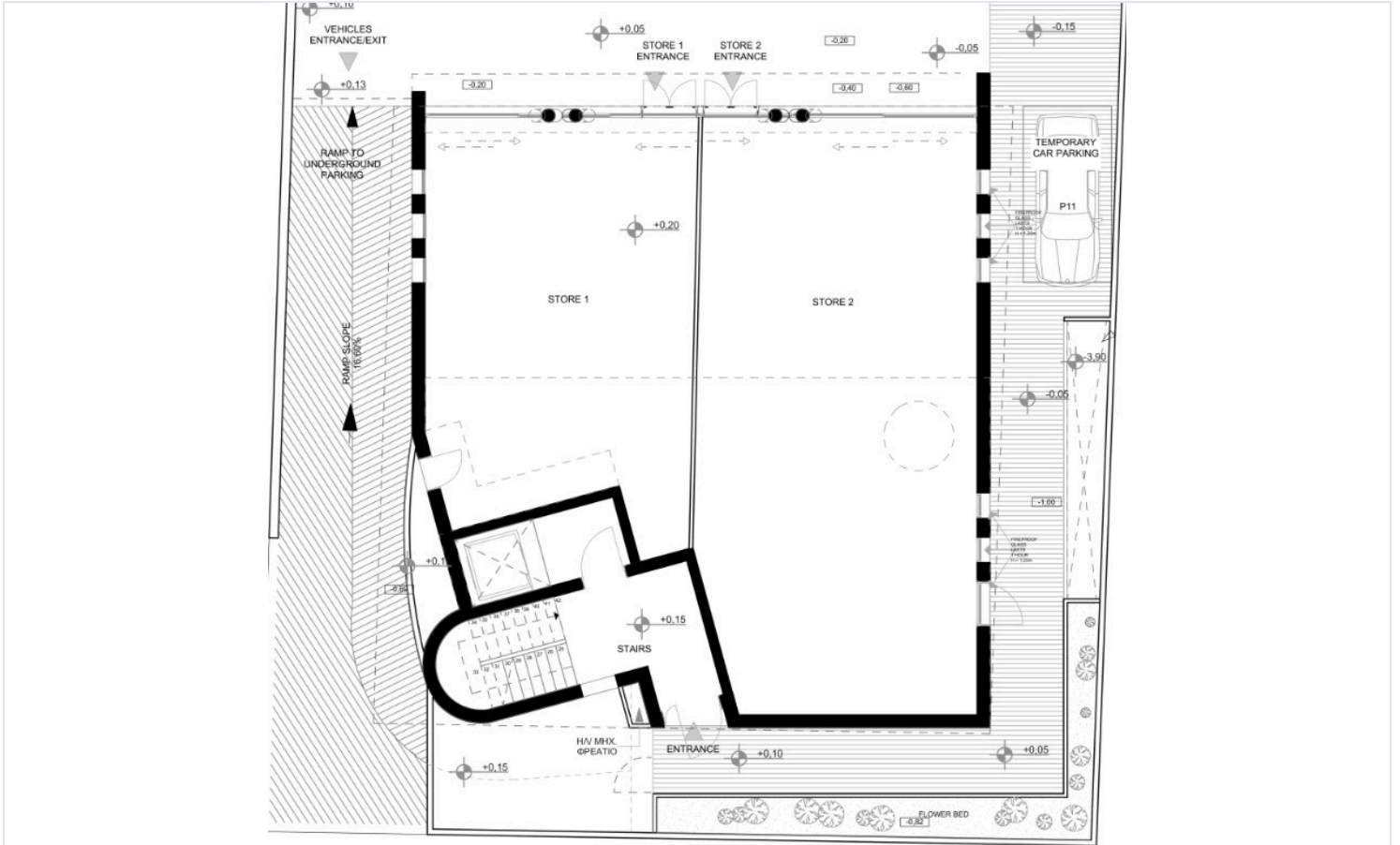
- Covered Area: 170m²

- Covered Veranda: 64m²

Second Floor:



Floor plans



Additional information

Facilities

Aircondition, Provision

Heating, Underfloor

Parking, Underground

Features

Alarm system

Business facilities

CCTV

City view

Closed offices

Double glazing

Easy access to highway

Easy access to main roads

Excellent condition

High ceilings

Internal stairs

Kitchen

Lobby

Near amenities

Near bus route

Roof garden

Server room

Spacious rooms

