

#2492

2-Bedroom Apartment, Kato Polemidia, Limassol

 Kato Polemidia, Limassol

€285,000 +VAT





Overview

Specifications

Bedrooms

 2

Bathrooms

 2

Covered


 75 m²

Type **Apartment**

Covered veranda **20 m²**

Status **Under construction**

Year of construction **2027**

Energy efficiency rating  **A**

Description

Presenting this 2-bedroom apartment in Kato Polemidia area of Limassol, just 10 minutes from the city centre and 2 minutes from the highway. The building is meticulously designed with attention to detail, offering a stylish and comfortable living environment.

Situated in a quiet neighbourhood, the apartment combines elegance with convenience, close to schools, shops, banks, and essential services, making it an ideal choice for upscale urban living.

Specifications:

- Covered Areas: 75m²

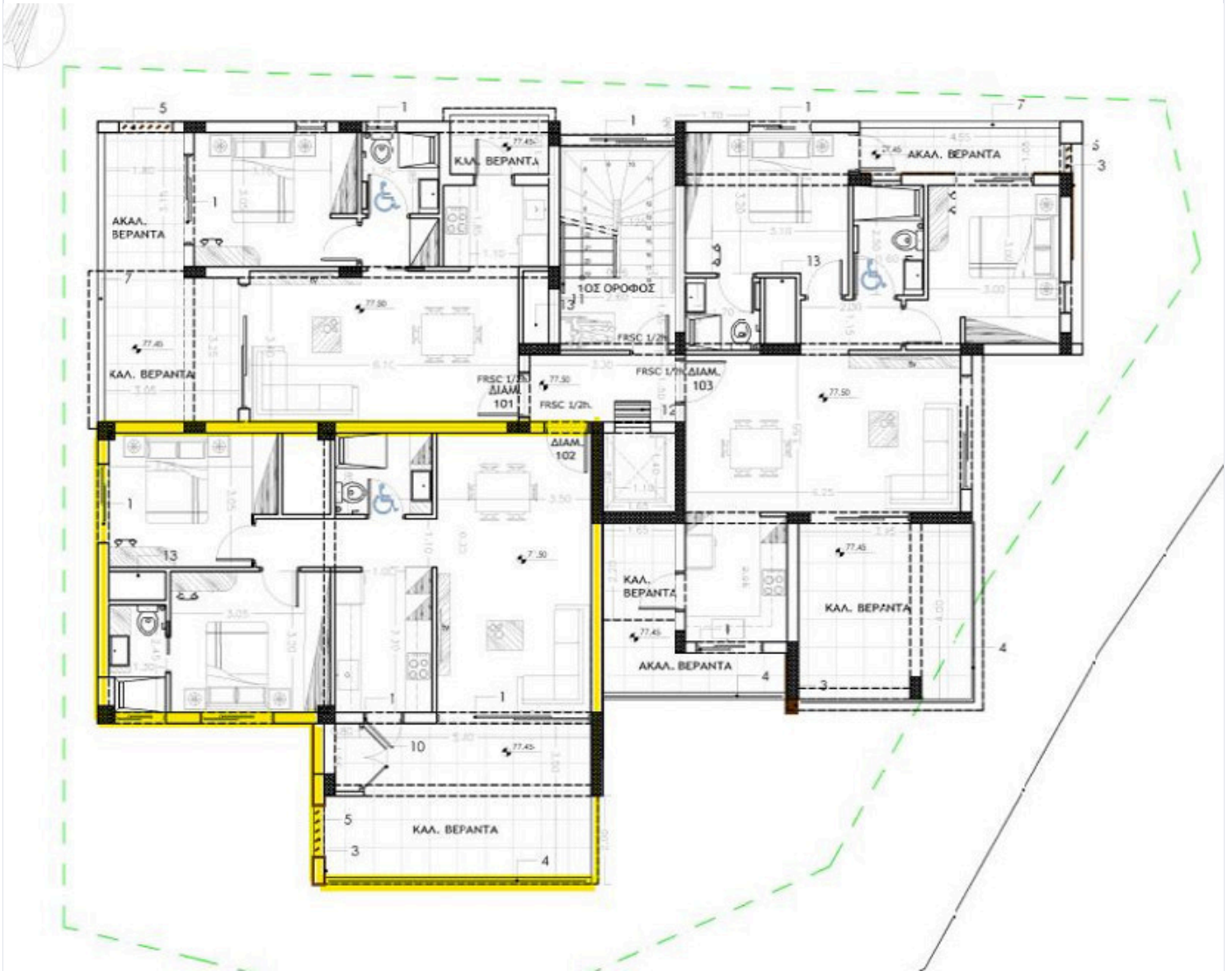
- Covered Verandas: 20m²

Price: € 285.000+VAT

Contact us for a viewing



Floor plans



Additional information

Facilities

Aircondition, Provision

Parking, Covered

Elevator

Solar water heater

Heating, Provision

Storage

Features

Balcony

Door screen

Elevated

High ceilings

Modern design

Quiet area

Bright

Double glazing

En suite bathroom

Investment opportunity

Near amenities

Spacious rooms

City view

Easy access to highway

Guest WC

Luxury specifications

Open plan

