

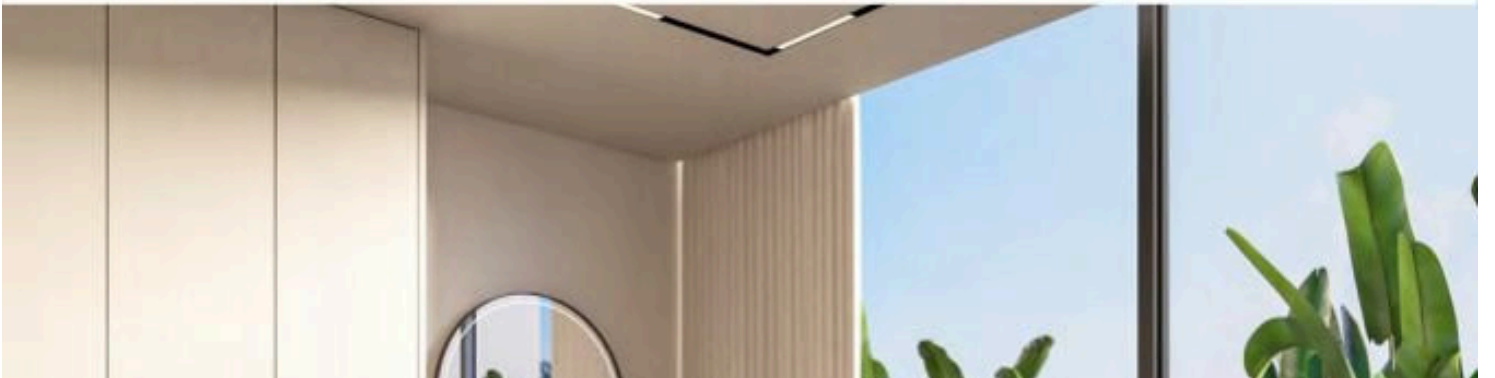
#2484

3-Bedroom Semi-Detached House, Agios Athanasios, Limassol

📍 Agios Athanasios, Limassol

€584,000 +VAT





Overview

Specifications

Bedrooms



3

Bathrooms



3

Covered

153 m²

Type **Semi-Detached House**

Plot **198 m²**

Uncovered veranda **33 m²**

Status **Under construction**

Year of construction **2027**

Energy efficiency rating **A**

Description

Introducing this incredible 3-bedroom semi-detached house nestled in the Agios Athanasios area of Limassol, just 10 minutes from the city centre. Perfect for those seeking a stylish place to live or invest in, this property boasts top-notch finishes throughout, exuding charm and sophistication. It is an ideal choice for those who want to invest in tranquil city living with easy access to numerous amenities, and is just a 5-minute drive from the highway.

This exceptional property features a spacious living and dining area on the ground floor, seamlessly connected to a modern kitchen, creating a warm and functional space for daily living. Additionally, there is a bathroom on the ground floor for added convenience. Upstairs, you will find three generously sized bedrooms, one of which includes an ensuite bathroom, ensuring comfort and convenience for residents. Moreover, there is an additional separate family bathroom.

House Specifications:

- Covered Areas: 153m²
- Uncovered Verandas: 33m²
- Plot Areas: 198m²

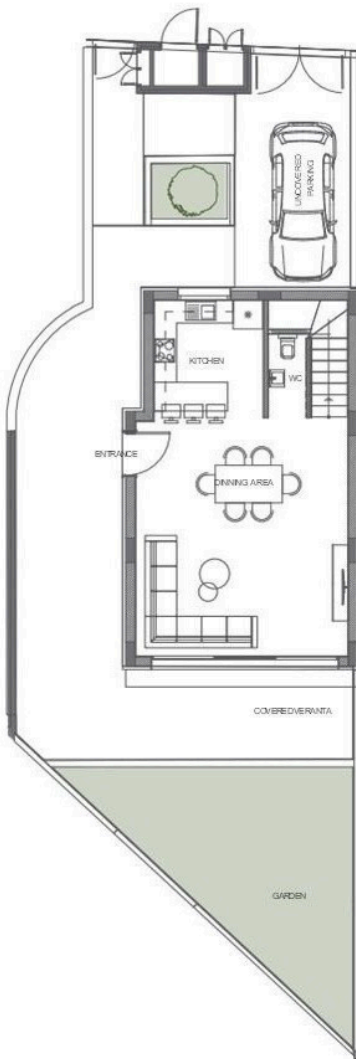
Price: €584.000+ VAT

Contact us for a viewing.

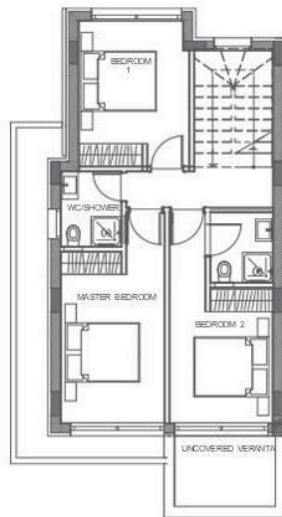


Floor plans

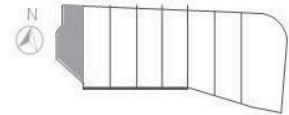
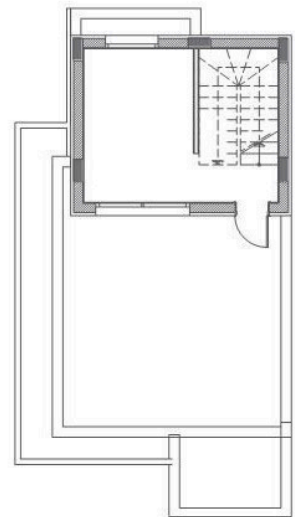
Ground Floor



1st Floor



Roof Garden



Additional information

Facilities

Aircondition, Provision

Landscaped garden

Storage

Gated complex

Parking, Covered

Heating, Provision

Solar water heater

Features

Balcony

Double glazing

En suite bathroom

High ceilings

Laundry room

Near amenities

Spacious rooms

Bright

Easy access to highway

Garden

Internal stairs

Luxury specifications

Open plan

Door screen

Easy access to main roads

Guest WC

Investment opportunity

Modern design

Quiet area

