

#2411

# 2-Bedroom Penthouse, Agia Fyla, Limassol

📍 Agia Fyla, Limassol

€420,000 +VAT





# Overview

## Specifications

Bedrooms

 2


Bathrooms

 3

Covered

 78 m<sup>2</sup>

Type	<b>Apartment</b>
Covered veranda	<b>27 m<sup>2</sup></b>
Uncovered veranda	<b>14 m<sup>2</sup></b>
Roof garden	<b>54 m<sup>2</sup></b>

Status	<b>Under construction</b>
Year of construction	<b>2026</b>
Energy efficiency rating	 <b>A</b>

## Description

Introducing this 2-bedroom penthouse, situated at Agia Fyla, Limassol, built on a small residential building (only 6 apartments) located in a quiet area with easy access to the highway as well as to the centre of the city.

The architectural design of the building combines comfort with style, aiming to enhance the living quality of life for future tenants and investors. The penthouse itself has been thoughtfully designed to maximise space and natural light, creating a bright and inviting atmosphere.

Located in a peaceful neighbourhood, the property combines refined living with convenience, being close to schools, shops, banks, and essential services, making it an ideal choice for upscale urban living.

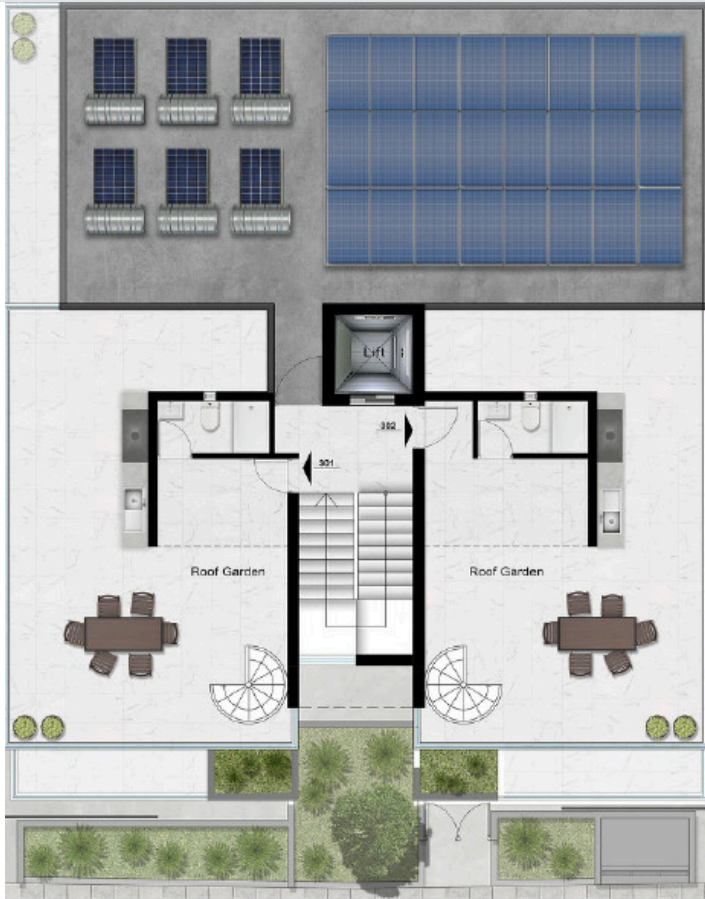
Specifications:

- Covered Areas: 78m<sup>2</sup>
  - Covered Verandas: 27m<sup>2</sup>
  - Uncovered Verandas: 14m<sup>2</sup>
  - Roof Garden: 54m<sup>2</sup>
- Price: €420.000 +VAT

Contact us for a viewing.



# Floor plans



# Additional information

## Facilities

Aircondition, Split system

Elevator

Heating, Split system

Parking, Covered

Solar water heater

Storage

## Features

Balcony

Bright

Door screen

Double glazing

Easy access to highway

Easy access to main roads

Elevated

Guest WC

Investment opportunity

Luxury specifications

Modern design

Near amenities

Near bus route

Open plan

Quiet area

Roof garden

Spacious rooms

