

#2360

2-Bedroom Apartment, Germasogeia, Limassol

📍 Germasogeia, Limassol

€555,000 +VAT





Overview

Specifications

Bedrooms



2

Bathrooms



2

Covered



85 m²

Type

Apartment

Covered veranda

21 m²

Status

Under construction

Year of construction

2026

Energy efficiency rating



Description

Presenting these 2-bedroom apartments in Germasogeia area of Limassol, just 10 minutes from the city center and 2 minutes from the highway and 5 minutes from the beach, providing easy access to amenities. The building is meticulously designed and offers access to a communal swimming pool, adding a touch of luxury for both investors and buyers.

Located in a peaceful neighborhood, the property combines refined living with convenience, being close to schools, shops, banks, and essential services, making it an ideal choice for upscale urban living.

Specifications:

- Covered Areas: 85m²

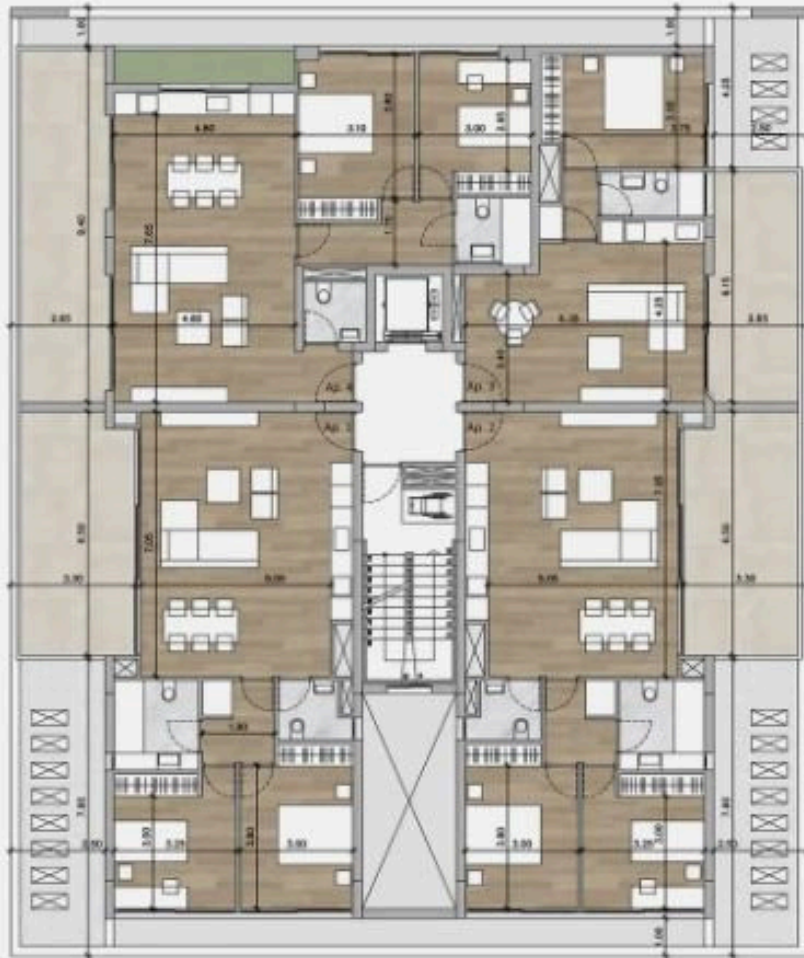
- Covered Verandas: 21m²

Price From: €555.000+VAT

Contact us for a viewing.



Floor plans



Additional information

Facilities

Aircondition, Split system

Parking, Covered

Storage

Elevator

Pool, Communal

Heating, Split system

Solar water heater

Features

Balcony

Door screen

Easy access to main roads

High ceilings

Luxury specifications

Near bus route

Smart home automation

Bright

Double glazing

Elevated

Investment opportunity

Modern design

Open plan

Spacious rooms

City view

Easy access to highway

Guest WC

Laundry room

Near amenities

Quiet area

