

#2348

2-Bedroom Apartment, Panthea, Limassol

📍 Panthea, Limassol

€350,000 +VAT





Overview

Specifications

Bedrooms



2

Bathrooms



2

Covered



80 m²

Type

Apartment

Covered veranda

22 m²

Status

Under construction

Year of construction

2026

Energy efficiency rating

 **A**

Description

Introducing this luxury 2-bedroom apartment in the prestigious Panthea area of Limassol. Ideally located just 2 minutes from the highway and 10 minutes from the city centre, this apartment presents an exceptional opportunity for both investors and homebuyers seeking modern comfort and refined living.

The apartment features a spacious living room, a well-appointed kitchen, a dining area, a guest WC, and two bedrooms, one of which includes an en suite bathroom. It also boasts expansive verandas, perfect for relaxing or entertaining.

Specifications:

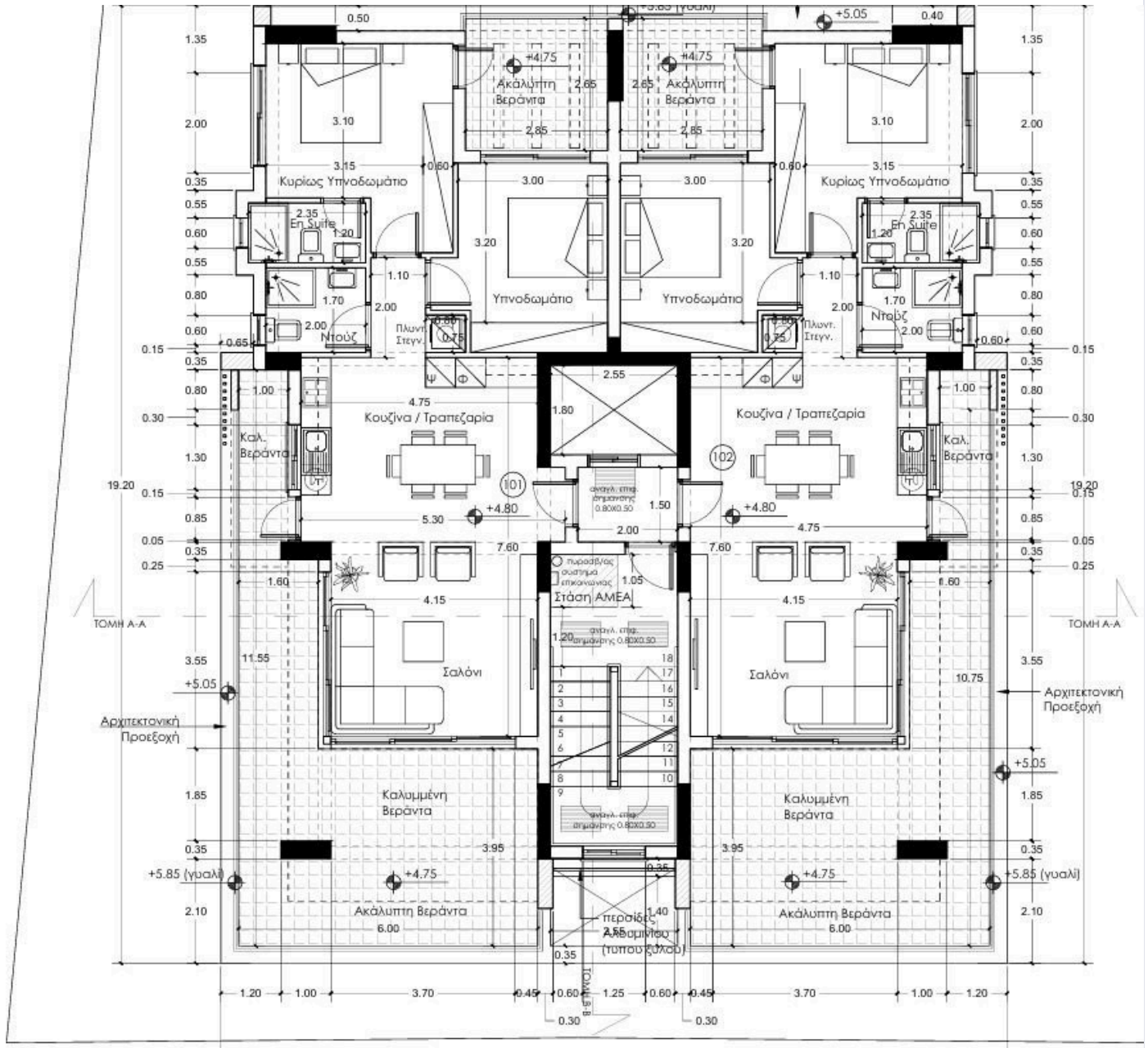
- Covered Areas: 80m²
- Covered Verandas: 12m²

Price: €350.000+VAT

Contact us for a viewing.



Floor plans



Additional information

Facilities

Aircondition, Split system

Elevator

Heating, Underfloor

Parking, Covered

Solar photovoltaic panels

Solar water heater

Storage

Features

Balcony

Bright

Door screen

Double glazing

Easy access to highway

Easy access to main roads

Elevated

En suite bathroom

Guest WC

High ceilings

Investment opportunity

Laundry room

Modern design

Near amenities

Open plan

Quiet area

Roller blinds

Shutters, electric (provision)

Spacious rooms

