

#2341

# 2-Bedroom Penthouse, Parekkklisia, Limassol

📍 Parekkklisia, Limassol

**€345,000** +VAT







# Overview

## Specifications

Bedrooms

 2

Bathrooms

 2

Covered

 78 m<sup>2</sup>

Type	Apartment
------	-----------

Covered veranda	20 m <sup>2</sup>
-----------------	-------------------

Roof garden	59 m <sup>2</sup>
-------------	-------------------

Status	Under construction
--------	--------------------

Year of construction	2027
----------------------	------

Energy efficiency rating	 A
--------------------------	---

## Description

Presenting this 2-bedroom penthouse nestled in the Parekklesia area in Limassol. Conveniently located approximately 20 minutes from Limassol city centre and 5 minutes from the highway and the beach, this property offers seamless access to a variety of amenities. Designed and constructed with meticulous attention to detail, it is an ideal opportunity for both investors and buyers.

This penthouse features outstanding design and high-quality finishes, ensuring a lifestyle of sophistication and comfort. Its proximity to essential services makes it an ideal choice for those seeking a suburban living experience.

Specifications:

- Covered Area: 78m2
- Covered Veranda: 20m2
- Roof Garden: 59m2

Price: €345.000+VAT

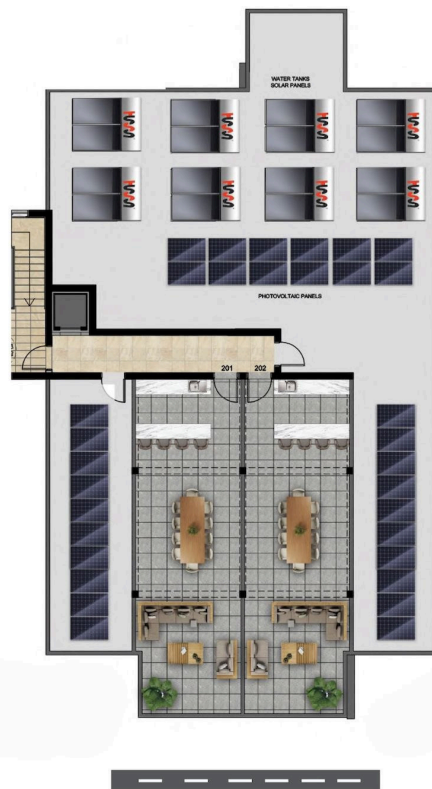
Contact us today to schedule a viewing!



# Floor plans



## R<sup>OO</sup>F FLOOR



# Additional information

## Facilities

Aircondition, Split system

Solar photovoltaic panels

Heating, Split system

Solar water heater

Parking, Covered

Storage

## Features

Balcony

Double glazing

Elevated

High ceilings

Near amenities

Roof garden

Bright

Easy access to highway

En suite bathroom

Investment opportunity

Open plan

Shutters, electric (provision)

Door screen

Easy access to main roads

Guest WC

Modern design

Quiet area

Spacious rooms

