

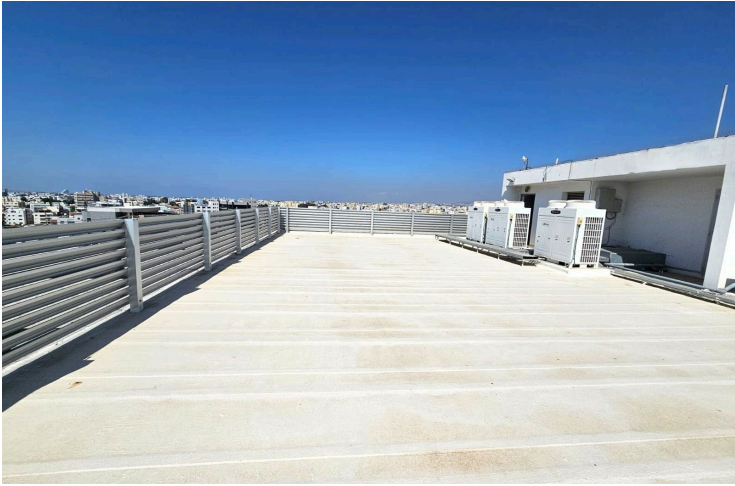
#2320

Commercial Building, Apostolou Petrou Kai Pavlou, Limassol

📍 Petrou Kai Pavlou, Limassol

€6,300,000





Overview

Specifications


Bathrooms

 13

Covered

 1622 m²

Type	Commercial Building
Plot	694 m²
Basement	1124 m²
Mezzanine	146 m²
Roof garden	52 m²

Status	Completed
Year of construction	2012
Title deed	Land
Energy efficiency rating	 B+

Description

Presenting a five-floor commercial building located in a prime business area in Apostolou Petrou & Pavlou, Limassol. Strategically positioned on a bustling commercial street, this property offers excellent visibility and easy access to all essential amenities, making it an ideal hub for business activity.

The building comprises five floors designated for office use, along with two ground-floor shops. Additionally, it includes two underground levels designated for parking. Notably, one of the shops, currently operating as a café, is leased at €4,630 per month, while the third floor is also rented at €5,100 per month, providing immediate rental income.

An added investment advantage is the option to purchase shares of the owning company.

This property is perfect for companies looking to establish their headquarters in a central and professional setting. It also represents an exceptional investment opportunity, combining a prestigious address with strong income potential.

Specifications:

Basement A:

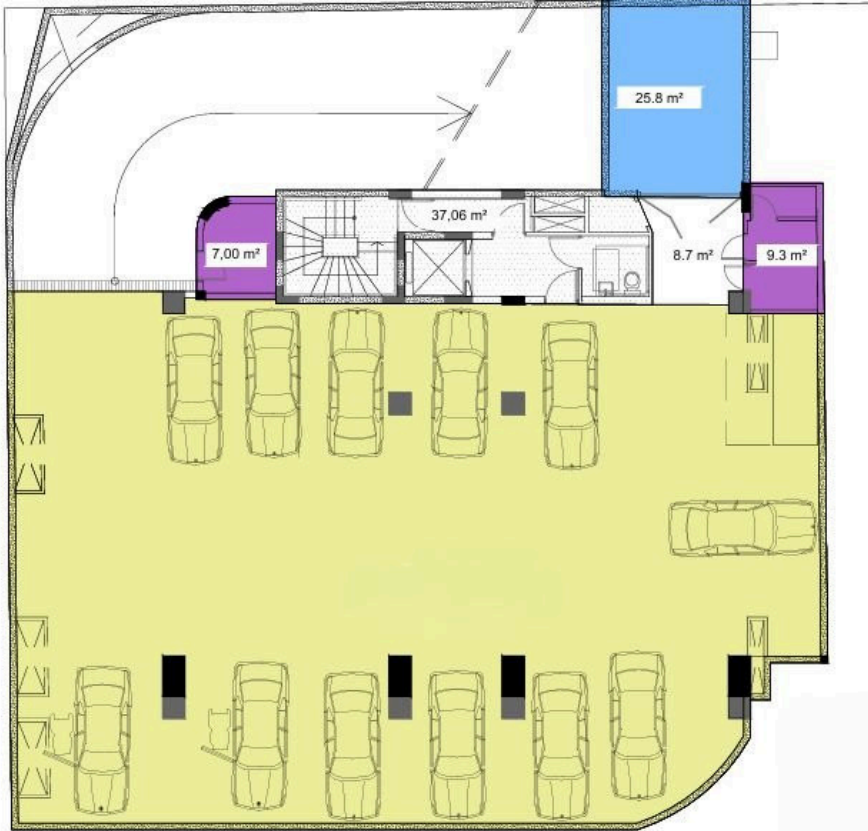
- Total Area: 567m²

Basement B:

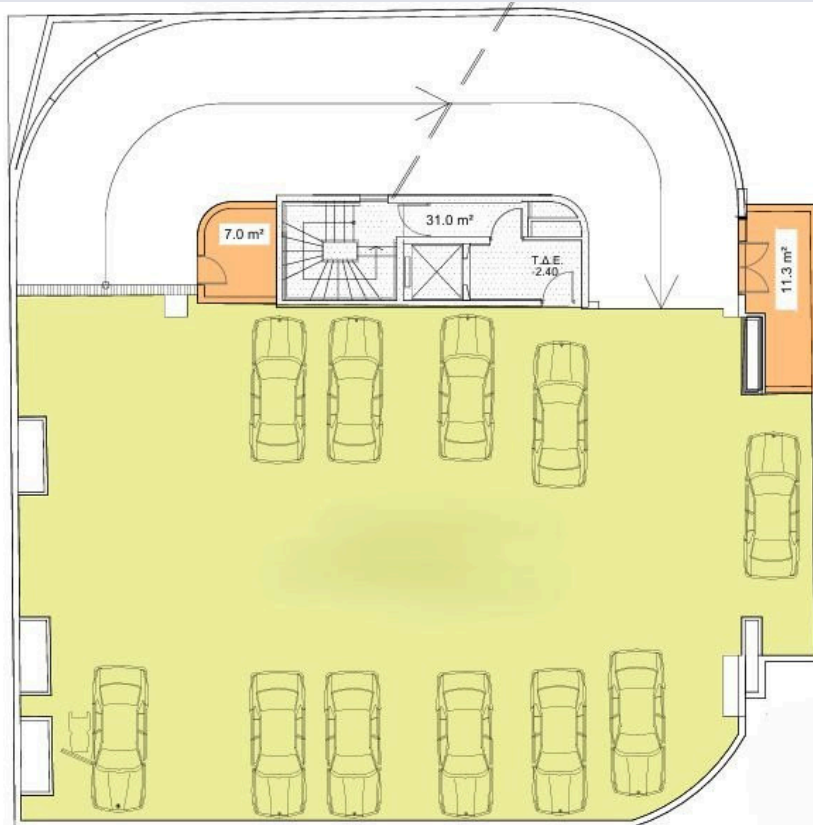
- Total Area: 557m²



Floor plans



ΚΑΤΟΨΗ - Υπόγειο -5,45m



ΚΑΤΟΨΗ - Υπόγειο -2,50m



Additional information

Facilities

Aircondition, Split system

Elevator

Heating, Split system

Parking, Underground

Features

Alarm system

