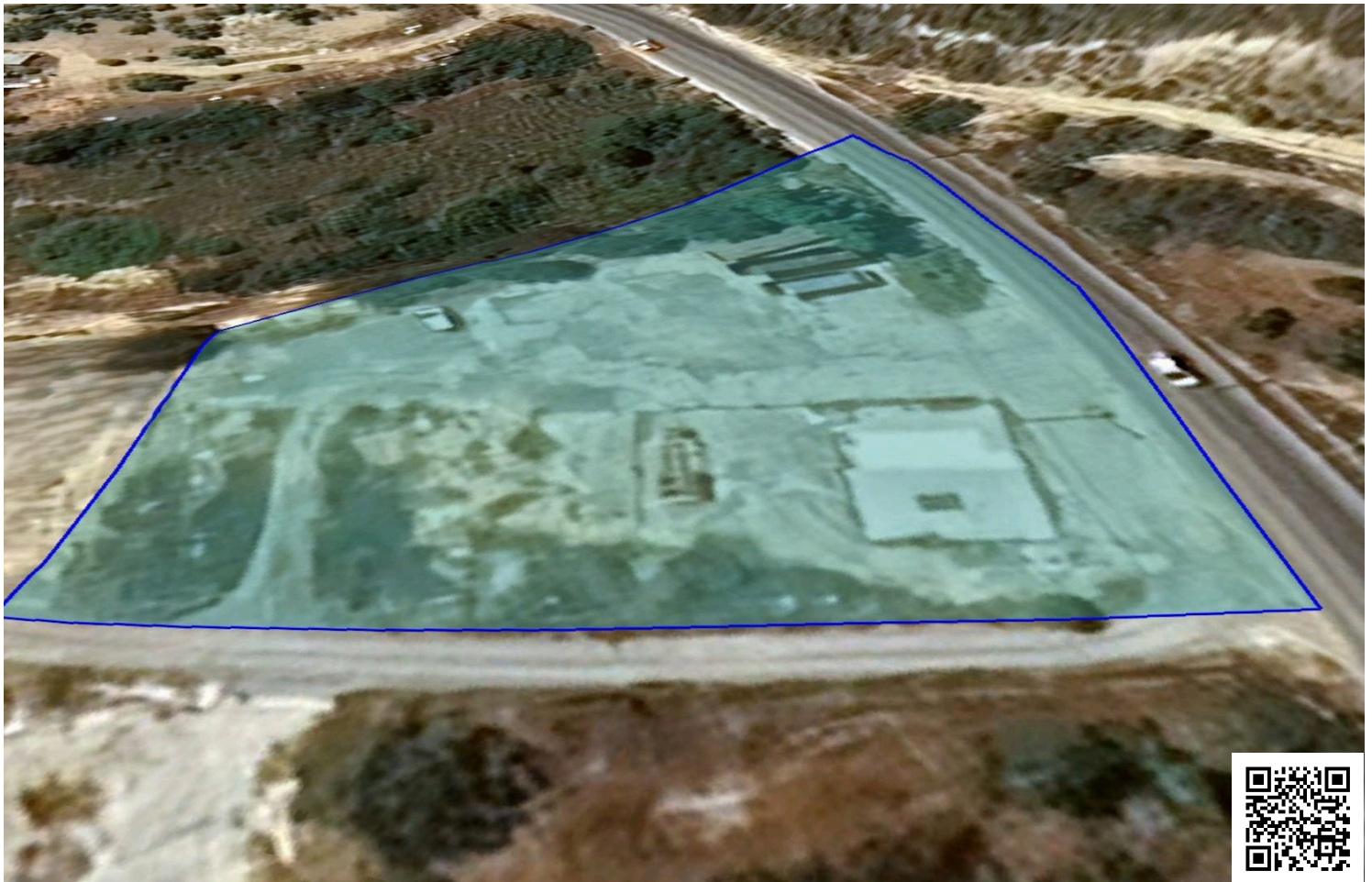


#2295

Residential Field with Permit, Agia Fyla, Limassol

📍 Agia Fyla, Limassol

€990,000



Overview

Specifications

Area

 2927 m²

Type

Field

Description

Presenting this residential field located in the Agia Fyla area of Limassol spanning a total area of 2,927 m². Ideally situated just 5 minutes from the highway and 15 minutes from the city center, the property offers both convenience and accessibility.

It benefits from direct access via a registered road and comes with a submitted planning permit for the development of 21 apartments, including six three-bedroom apartments, nine two-bedroom apartments, and six one-bedroom apartments.

With a building density of 60% and a coverage ratio of 20%, the field allows for the construction of up to two floors, with a maximum building height of 10 meters.

This is a rare investment opportunity for developers and investors seeking to deliver a premium residential project.

Contact us today for detailed information!



Additional information

Features

City view	Easy access to highway	Easy access to main roads
Elevated	Investment opportunity	Near amenities
Prime land	Quiet area	

Planning zones

Zone	Cover factor	Build factor	Max height	Max floors	Affected percentage
Ka8	35%	60%	10 m	2	-

