

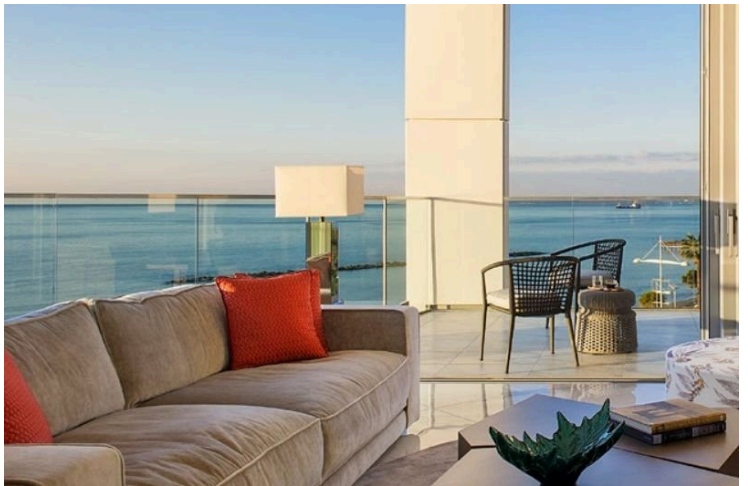
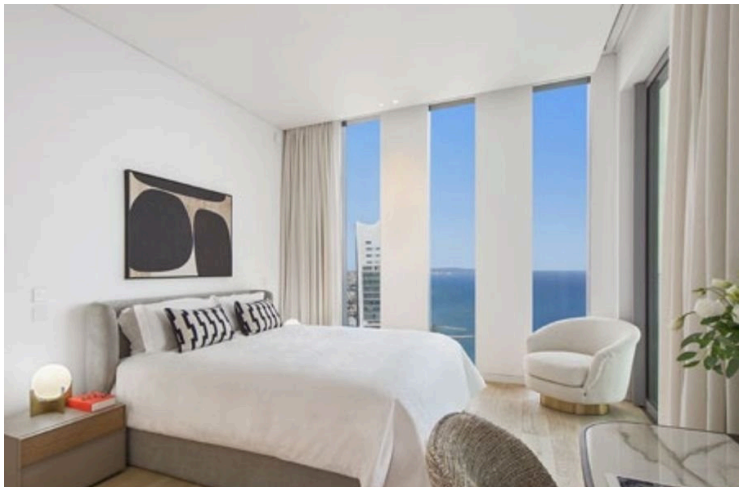
#2258

2-Bedroom Apartment, Neapolis, Limassol

📍 Neapolis, Limassol

€1,250,000 +VAT





Overview

Specifications

Bedrooms


 2

Bathrooms

 2

Covered

 93 m²

Type	Apartment	Year of construction	2026
Covered veranda	27 m ²	Energy efficiency rating	 A
Status	Under construction		

Description

Presenting this spacious 2-bedroom apartment, ideally situated in the Neapolis area. Combining modern elegance with panoramic sea views, this residence offer a rare blend of space, style, and luxury.

Designed for comfort and functionality, this apartment features a generous open plan living room connected to a modern kitchen, two bedroom and one bathroom ensuite and one family bathroom. Expansive verandas create an effortless indoor-outdoor flow, perfect for enjoying Limassol's serene seafront atmosphere.

Residents benefit from a range of luxury amenities, including a spa, swimming pools for both adults and children, a fully equipped gym, and additional exclusive services.

This apartment offers a perfect opportunity for homebuyers or investors who are seeking a premium residence in one of Limassol's most desirable coastal neighborhoods.

Specifications:

- Covered Area: 93m2
- Covered Veranda: 27m2

Price: €1.250.000+VAT

Contact us today for more information!



Floor plans



Additional information

Facilities

Aircondition, Split system

Elevator

Heating, Split system

Parking, Covered

Solar photovoltaic panels

Childrens playground

Gated complex

Indoor pool, Communal

Pool, Communal

Spa

Clubhouse

Gym

Landscaped garden

Sauna

Storage

Features

Alarm system

Door screen

Easy access to main roads

Guest WC

Investment opportunity

Modern design

Open plan

Quiet area

Smart home automation

Balcony

Double glazing

Elevated

Heart of city center

Laundry room

Near amenities

Panoramic view

Sea front

Spacious rooms

Bright

Easy access to highway

En suite bathroom

High ceilings

Luxury specifications

Near bus route

Pool bar

Sea view

