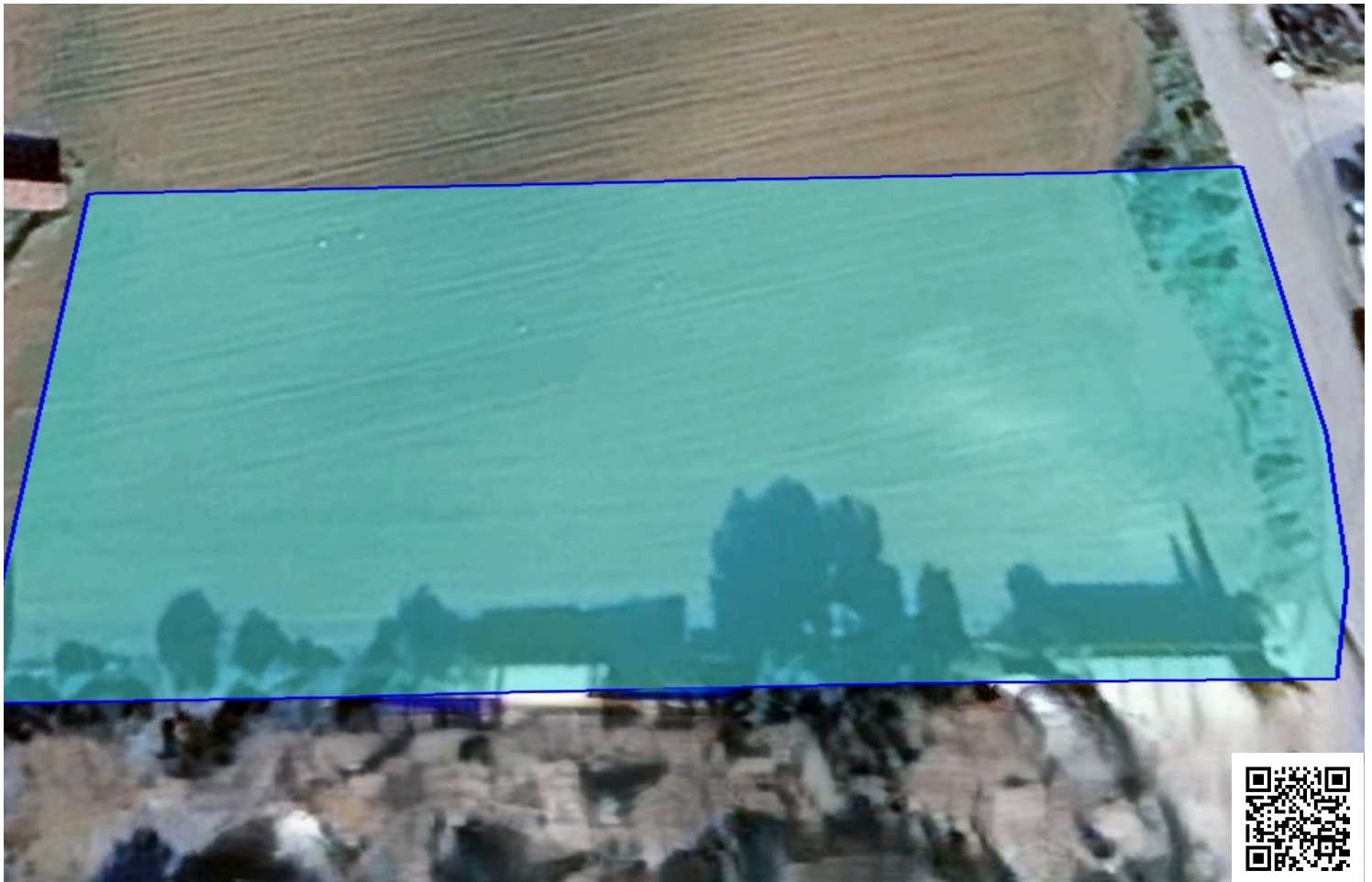


#2238

Residencial Field, Ypsonas, Limassol

📍 Ypsonas, Limassol

€500,000



Overview

Specifications

Area

 3283 m²

Type

Field

Title deed

Yes

Description

Introducing this residential field in the Ypsonas area of Limassol, spanning a total area of 3.283 m². Conveniently located just 5 minutes from the highway and approximately 15 minutes from Limassol city center.

With a building density of 40% and coverage of 25%, this field permits the construction of up to two floors with a maximum height of 8.3 meters. The field have a registered road right in the front.

This field presents an exceptional opportunity for developers and investors to create luxury homes.

Contact us for a viewing.



Additional information

Features

Easy access to highway

Easy access to main roads

Elevated

Investment opportunity

Near amenities

Own water supply

Prime land

Quiet area

Planning zones

Zone	Cover factor	Build factor	Max height	Max floors	Affected percentage
H4	25%	40%	8.3 m	2	-

