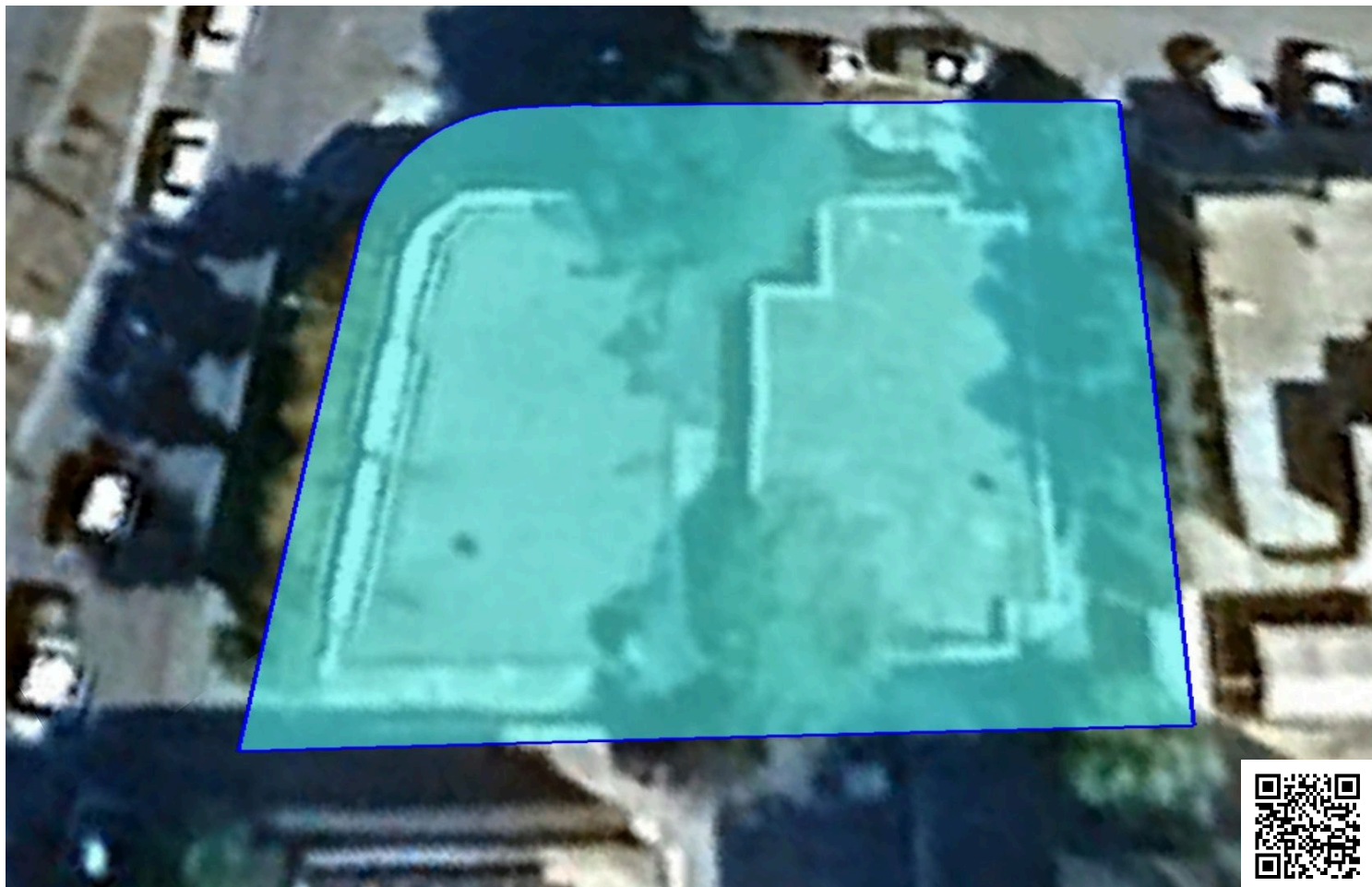


#2093

Commercial Plot, Katholiki, Limassol

 Katholiki, Limassol

€2,000,000



Overview

Specifications

Area

 705 m²

Type	Building Plot	Title deed	Yes
------	----------------------	------------	------------

Description

We present this commercial plot with a total area of 705 m², ideally located in the Katholiki area of Limassol. Positioned on a prime commercial street, the plot offers excellent visibility and accessibility, surrounded by banks, shops, restaurants, and schools. This makes it an exceptional opportunity for businesses looking to establish themselves in one of Limassol's most prominent and vibrant locations.

According to Limassol's local town planning regulations, the plot falls within the Eβ2 commercial zone, allowing for the development of a building up to six floors and a maximum height of 24 meters.

This property offers strong potential for a commercial or mixed-use development, ideal for offices, exhibition spaces, retail outlets, or corporate headquarters. It is particularly appealing to high-profile companies seeking a strategic and prestigious address. An old residence on the plot will need to be demolished to unlock its full development potential.

Contact us today for detailed information.



Additional information

Features

City view

Corner

Easy access to highway

Easy access to main roads

Elevated

Heart of city center

Investment opportunity

Near amenities

Near bus route

Prime land

Planning zones

Zone	Cover factor	Build factor	Max height	Max floors	Affected percentage
Eβ2	50%	180%	24 m	6	-

