

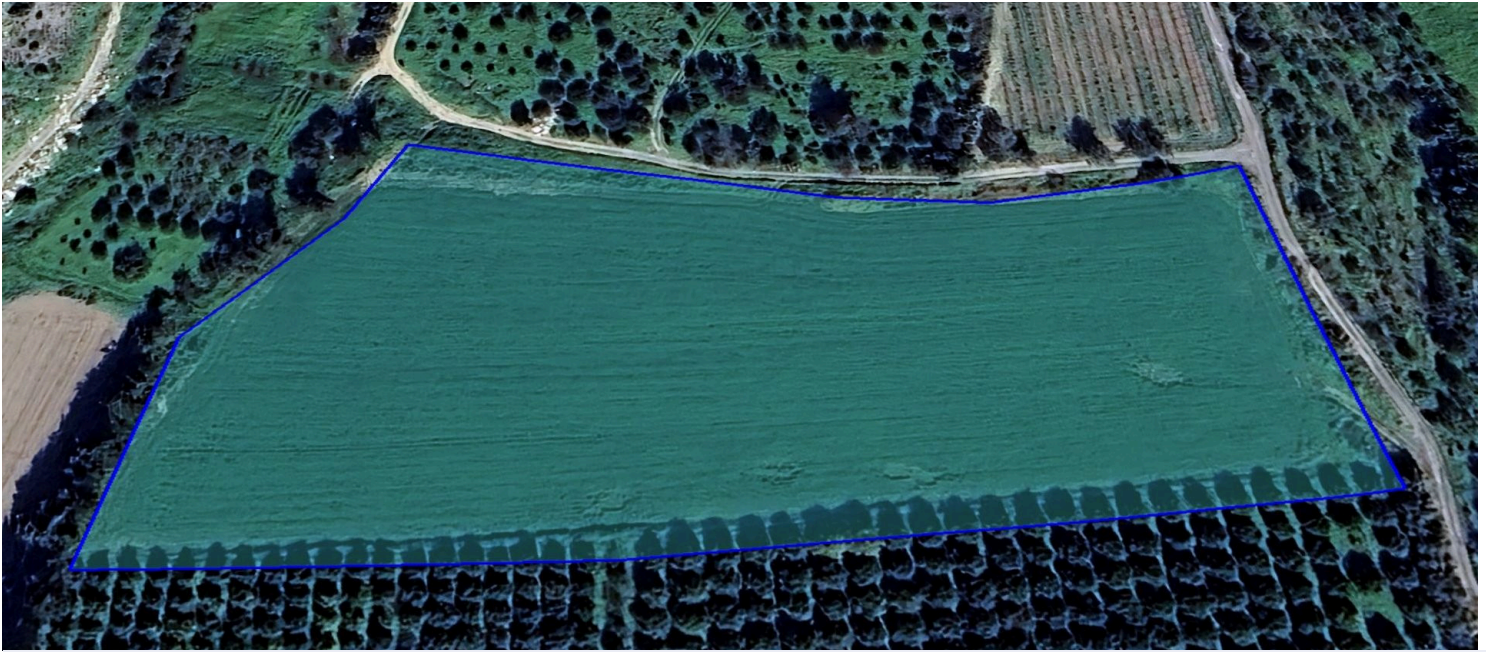
#2091

Residential Field, Erimi, Limassol

📍 Erimi, Limassol

€3,400,000





Overview

Specifications

Area

 18879 m²

Type

Field

Description

Introducing this exceptional residential field in the Erimi area of Limassol, covering a total area of 18,879 m² with a net buildable area of 9,460 m². Ideally positioned just a 5-minute drive from the highway and 20 minutes from Limassol city center, this field benefits from a registered road at the front, ensuring easy and direct access.

Erimi has seen significant growth over the past two decades, with notable residential and commercial developments. The area now hosts a variety of restaurants, shops, holiday homes, and other establishments, enhancing its appeal as both a residential and investment destination.

With a building density of 60% and a coverage allowance of 35%, the field allows for the construction of buildings up to two floors, with a maximum height of 8.3 meters. It also offers the potential for additional building density.

This is a rare and highly attractive opportunity for investors and buyers looking to develop in a rapidly growing and well-connected area.

Contact us for detailed information.



Additional information

Features

Easy access to highway

Easy access to main roads

Elevated

Investment opportunity

Near amenities

Quiet area

Planning zones

Zone	Cover factor	Build factor	Max height	Max floors	Affected percentage
H3	35%	60%	8.3 m	2	-

