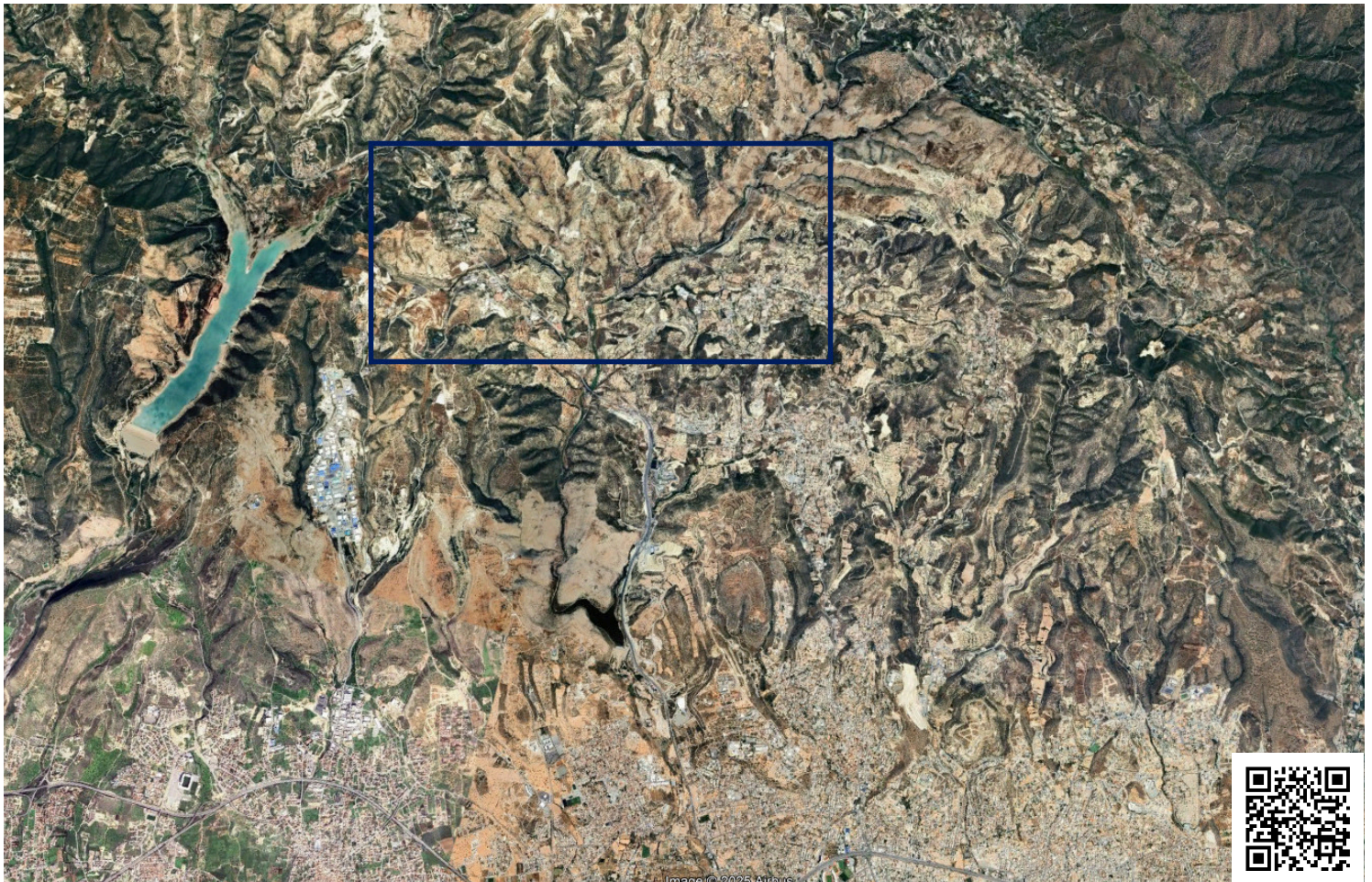


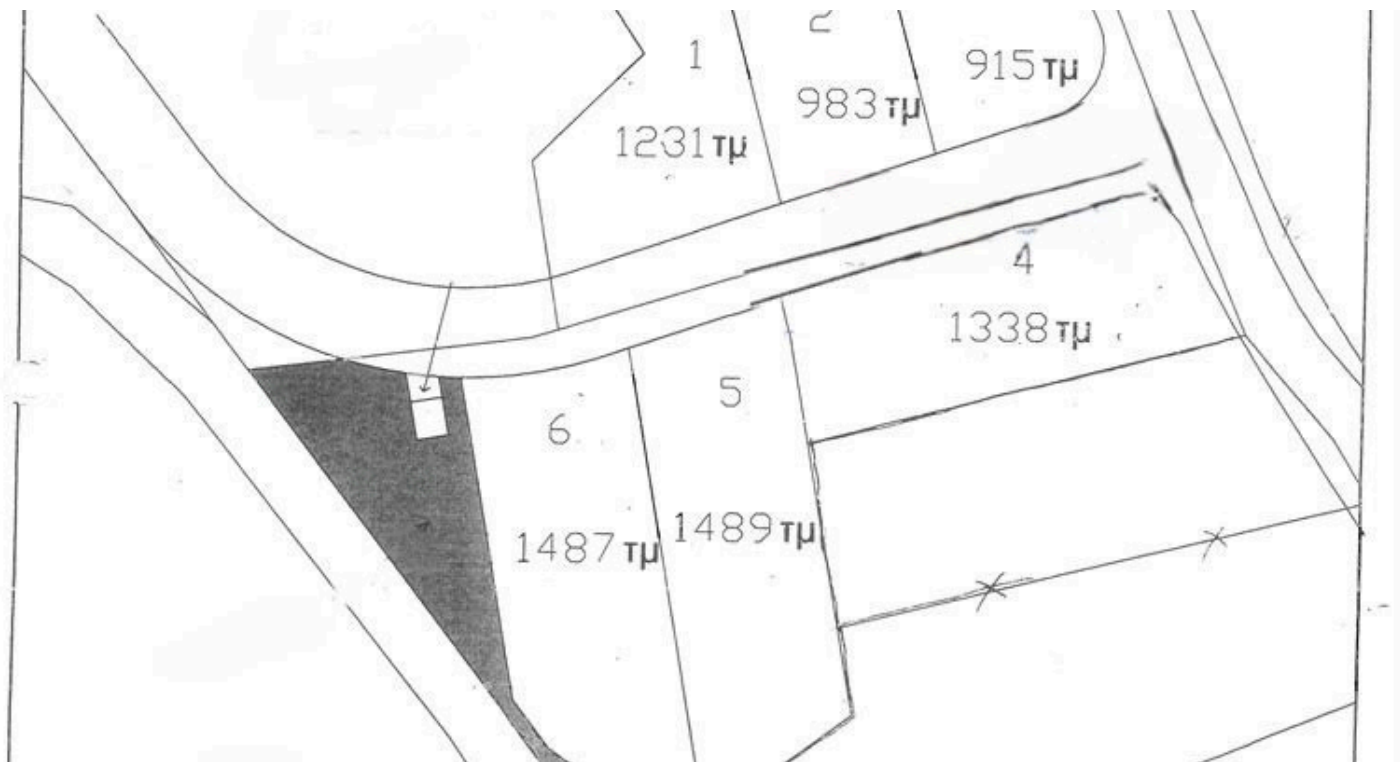
#1921

# Industrial Field With Permits, Paramythia, Limassol

📍 Paramythia, Limassol

€900,000 +VAT





# Overview

## Specifications

Area

 9665 m<sup>2</sup>

Type

Field

Title deed

Yes

## Description

Presenting this industrial field, ideally situated in Paramytha area of Limassol, offers a unique investment opportunity. Located 20 minute drive from Limassol city center, it provides easy access to the highway, just 10 minutes away, ensuring its prime location. The field benefits from a registered road right in the front.

This 9,665m<sup>2</sup> industrial field is ideally located 20 minutes from Limassol city center and 10 minutes from the highway, offering excellent accessibility. With a net buildable area of 8,194m<sup>2</sup>, it falls within Zone B1 and comes with building and planning permit for six industrial plots.

With a building factor of 90%, this plot allows for the construction of structures up to two floors, making it an excellent choice for businesses looking to establish themselves in Limassol's industrial market, renowned for its concentration of warehouses and factories.

Specifications:

- Plot Areas: 915m<sup>2</sup>-1.489m<sup>2</sup>

Price: €900.000+VAT

Contact us for a viewing.



# Additional information

## Features

Easy access to highway

Easy access to main roads

Elevated

Investment opportunity

Near amenities

Prime land

## Planning zones

Zone	Cover factor	Build factor	Max height	Max floors	Affected percentage
B1	50%	90%	8.3 m	2	-

