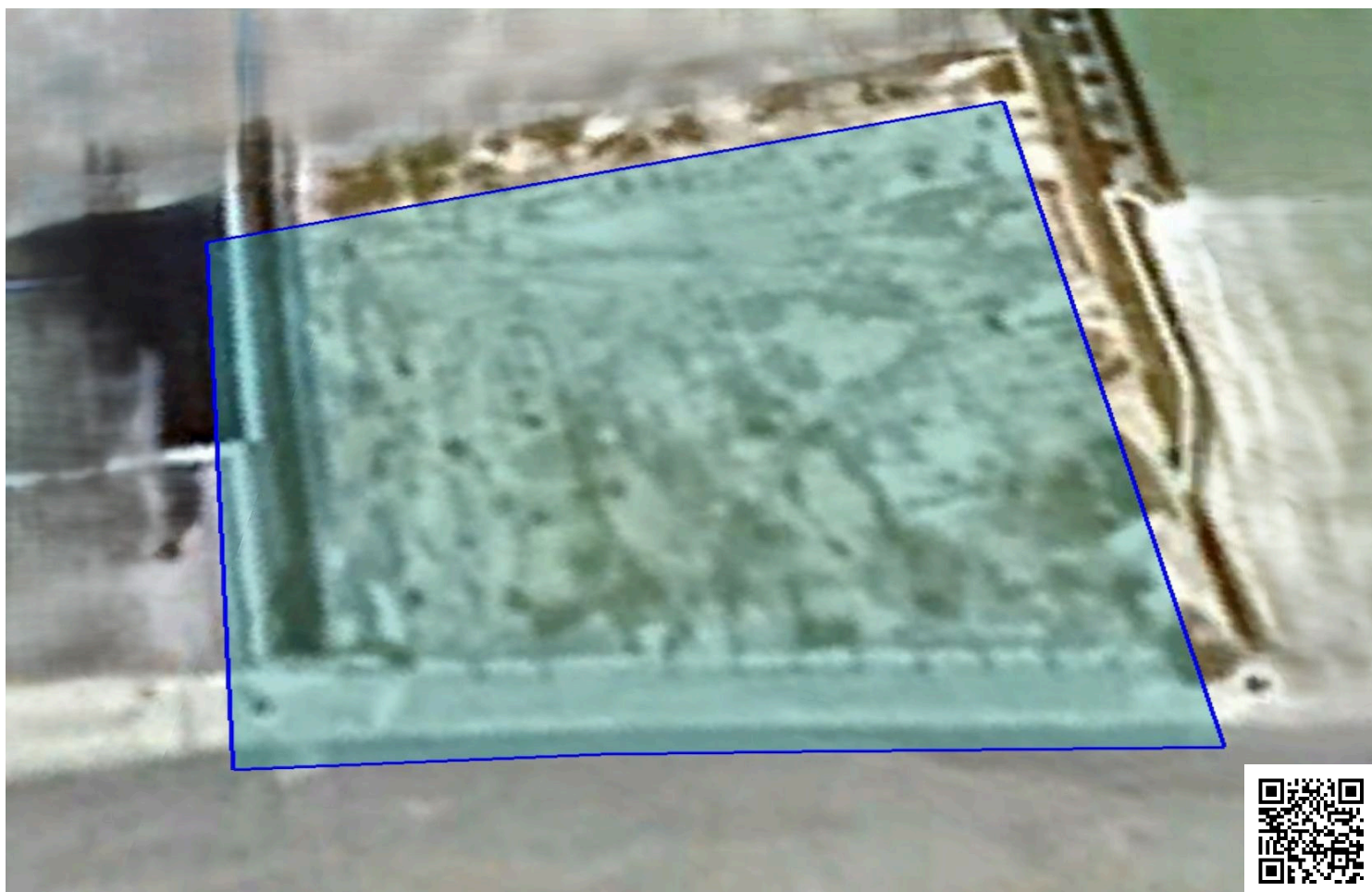


#1816

Residential Plot, Germasogeia, Limassol

📍 Germasogeia, Limassol

€335,000 +VAT



Overview

Specifications

Area

 348 m²

Type	Building Plot	Title deed	Yes
------	----------------------	------------	------------

Description

This prime HALF residential plot is situated in a newly built area with beautiful Seaview, in the prestigious area of Germasogeia, Limassol. Its location offers easy access to the highway, all the main roads and all essential services and amenities.

The plot falls into the planning zone Ka8 with 60% Building Density, 35% Coverage and its frontage is approx. 30 meters. It boasts a smooth surface.

The property is coming with architectural plans for the development of a luxury house.

Contact us for a viewing.



Additional information

Features

Connected to electric mains

Easy access to highway

Easy access to main roads

Municipal water/sewage

Near amenities

Own water supply

Prime land

Quiet area

Sea view

Planning zones

Zone	Cover factor	Build factor	Max height	Max floors	Affected percentage
Ka8	35%	60%	10 m	2	-

