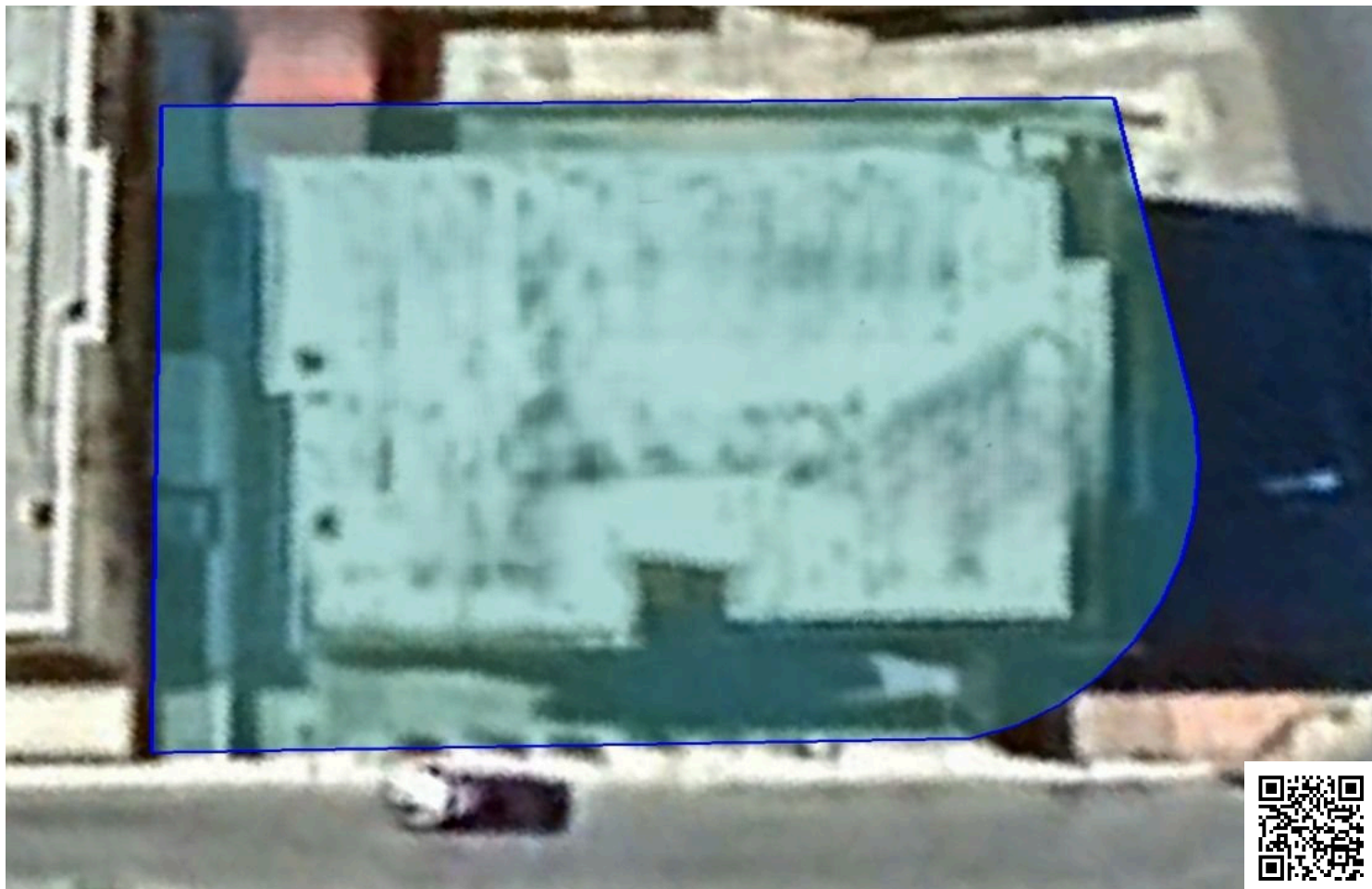


#1810

# Commercial plot, Katholiki, Limassol

 Katholiki, Limassol

€2,000,000



# Overview

## Specifications

Area

 **738 m<sup>2</sup>**

Type	<b>Building Plot</b>	Title deed	<b>Yes</b>
------	----------------------	------------	------------

## Description

We present you this commercial plot spanning 738 m<sup>2</sup> in an ideal location in the heart of Limassol city center.

Situated at a prime commercial street corner in a bustling part of the city, this plot of land offers a wide frontage, on a popular street with heavy traffic, ensuring high visibility. It is conveniently located near banks, shops, restaurants, and schools, making it a strategic location for various business opportunities.

According to the local town plan of Limassol, the plot is situated in a commercial zone Eβ2, with the below specifications. This allows the construction of a 6-floor building up to 24 meters high. Moreover, the plot has the potential to secure additional building factor through urban planning mechanisms.

This plot has the potential to be developed into a multi-floor building for commercial use, suitable for exhibition space, offices, and other commercial purposes. It is particularly attractive to prestigious companies seeking an inspiring location to establish their business, offering a unique investment opportunity that ensures a luxurious and productive environment.

Explore the potential of this exceptional plot and invest in a future of growth and success.

Contact us for further details and to schedule a viewing of this magnificent commercial plot!



# Additional information

## Features

Connected to electric mains

Corner

Easy access to highway

Easy access to main roads

Heart of city center

Near amenities

Near bus route

Prime land

## Planning zones

Zone	Cover factor	Build factor	Max height	Max floors	Affected percentage
Eβ2	50%	180%	24 m	6	-

