

#1774

2-bedroom Villas, Souni, Limassol

📍 Souni, Limassol

€310,000 +VAT





Overview

Specifications

Bedrooms

 2

Bathrooms

 1

Covered

 72 m²

Type	Detached House	Status	Under construction
Plot	225 m²	Year of construction	2025

Description

Introducing these exceptional 2-bedroom villas, located in a luxurious residential complex within a tranquil and highly desirable area. Just 20 minutes from Limassol city center and a short 5-minute drive to the highway, these homes are ideal for those seeking a stylish and elegant living space or a lucrative investment opportunity. With impressive finishes throughout, they offer charm and sophistication, perfect for a serene lifestyle.

Each villa features a spacious living and dining area seamlessly integrated with a modern kitchen, providing a warm and functional layout for daily living. The properties include two generously sized bedrooms and a separate bathroom for added comfort and convenience. Residents also have the option to enhance their experience by adding a private swimming pool, further elevating the appeal of these stunning villas.

Villas Specifications:

-Covered areas: 72m2

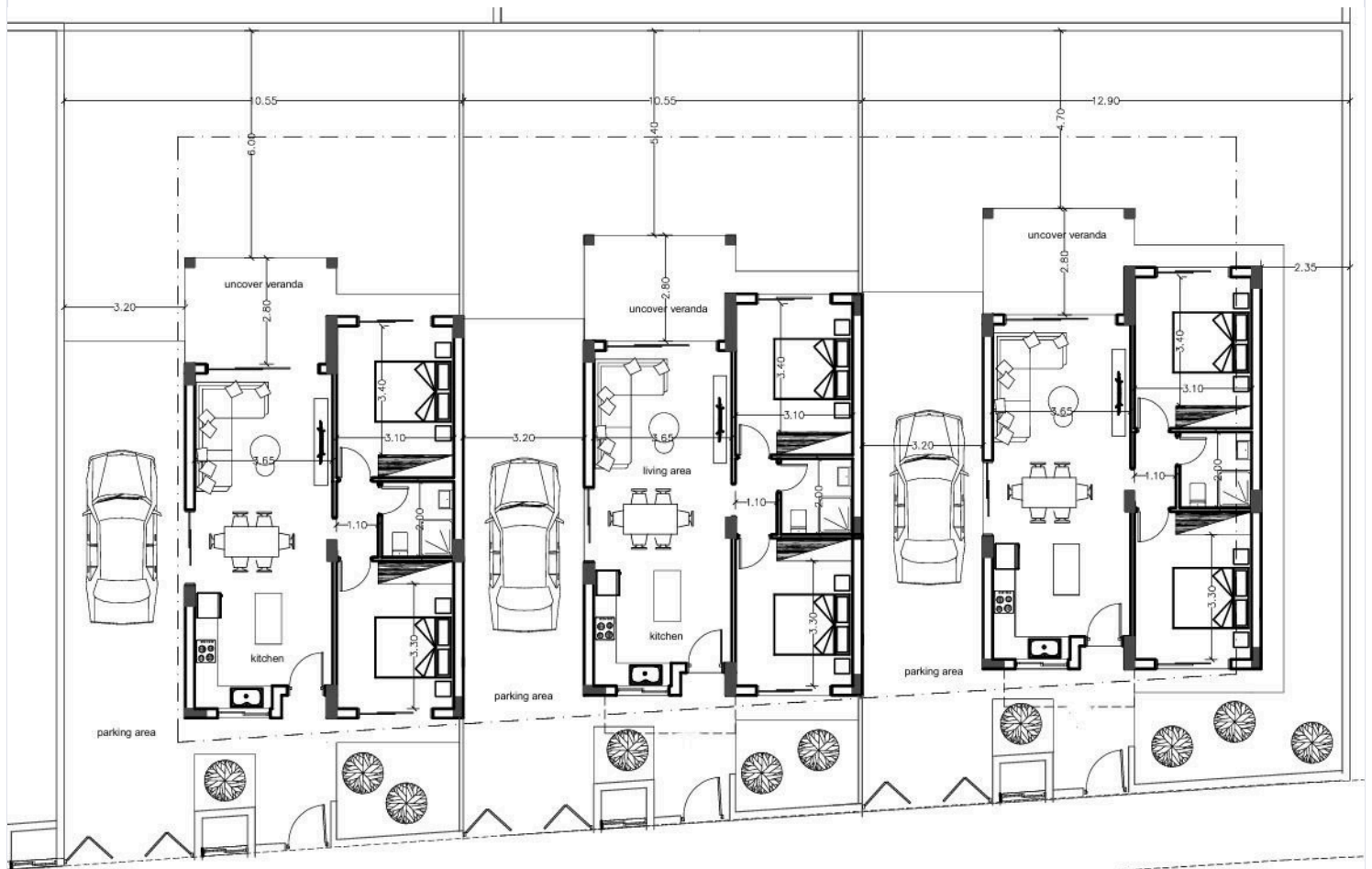
-Plot Areas : 225m2

Prices from: €310,000 +VAT

Contact us today to arrange a viewing and detailed information on this great investment opportunity.



Floor plans



Additional information

Facilities

Aircondition, Split system

Pool, Optional

Heating, Split system

Storage

Parking, Covered

Features

Balcony

Easy access to highway

Investment opportunity

Quiet area

Bright

Easy access to main roads

Next to green area

Rental potential

Country view

Elevated

Open plan

