

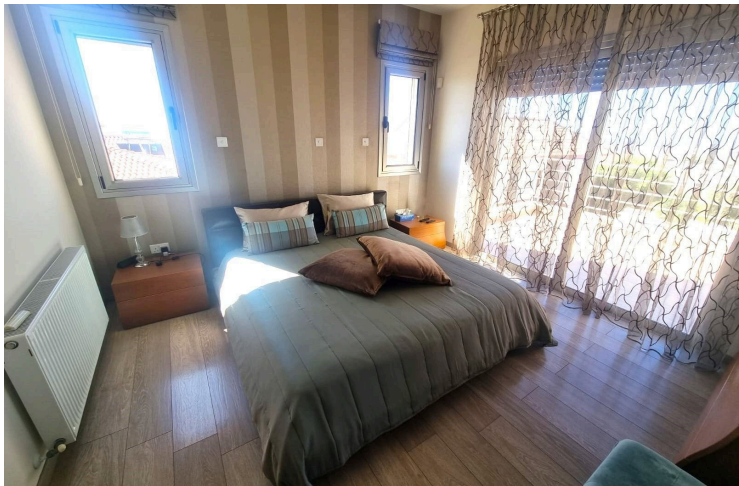
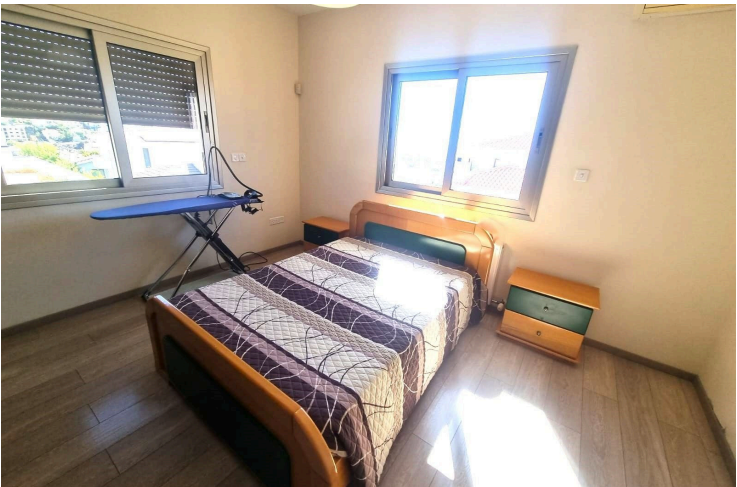
#1750

4-Bedroom Detached House, Panthea, Limassol

📍 Panthea, Limassol

€1,250,000





Overview

Specifications

Bedrooms

 4


Bathrooms

 3

Covered

 241 m²

Type	Detached House
Plot	529 m²
Covered veranda	44 m²
Basement	110 m²
Status	Resale

Year of construction	2007
Title deed	Final approval
Furnished	Fully furnished
Energy efficiency rating	 A

Description

This stunning property is located in the sought-after Panthea area of Limassol, offering breathtaking panoramic views. Spanning a total of 285 m² (241 m² internal covered area and 44 m² covered verandas) on a 529 m² plot, it also features a 110 m² basement.

This house boasts 4 bedrooms, including a master ensuite with a walk-in wardrobe, an open-plan kitchen with a dining and sitting area, a spacious living room, 2 bathrooms, a guest WC, and high-end finishes with electrical appliances.

Modern conveniences include gas central heating, a fireplace, and a 6KW photovoltaic system and thermal insulations. The basement boasts a covered parking area, accommodating more than two cars.

The exterior offers a landscaped garden, a covered veranda, and ample space for a swimming pool. Situated close to the highway and essential amenities, this residence combines luxury, functionality, and convenience.

Contact us today for more information!



Additional information

Facilities

Aircondition, Split system

Heating, Split system

Parking, Covered

Solar photovoltaic panels

Storage

Features

Balcony

Barbeque

Bright

Double glazing

Easy access to highway

Easy access to main roads

Elevated

En suite bathroom

Garden

Guest WC

High ceilings

Internal stairs

Investment opportunity

Laundry room

Near amenities

Quiet area

Spacious rooms

