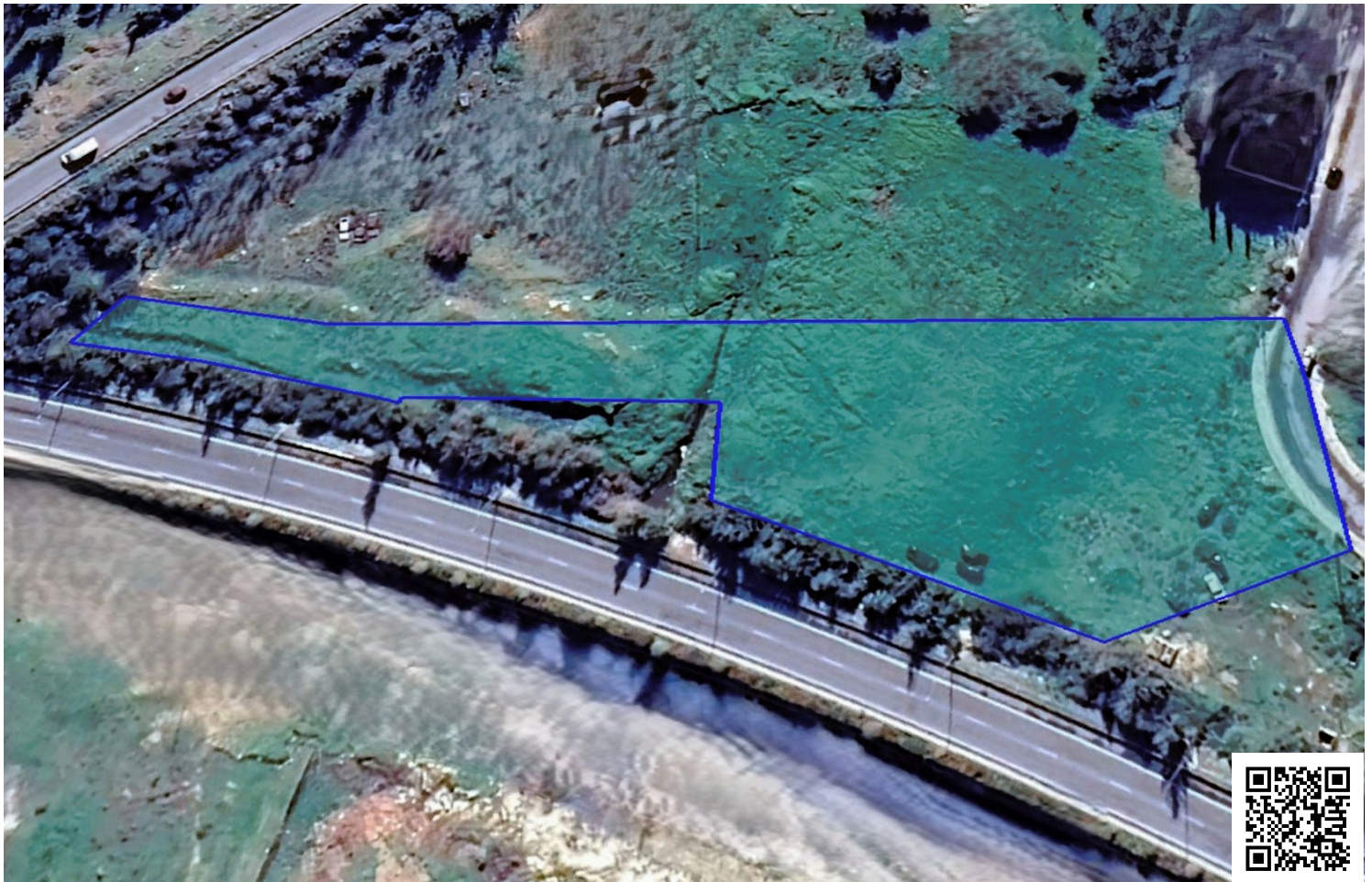


#1597

Residential Field, Ypsonas, Limassol

📍 Ypsonas, Limassol

€800,000 +VAT



Overview

Specifications

Area

 5288 m²

Type

Field

Title deed

Yes

Description

Presenting this residential field located in the growing area of Ypsonas, Limassol, spanning a total area of 5,288 m². With a registered road at the front, the field offers convenient access to essential amenities such as schools, shops, banks, and more.

The plot features a building density of 60%, 35% coverage, and allows for the construction of up to 2 floors with a maximum height of 10.5 meters. Its smooth surface enhance the development, making it an ideal opportunity to create a modern residential project.

This field presents an exceptional opportunity for developers and investors to create high-quality homes in one of Limassol's growing areas.

Contact us today for detailed information!



Additional information

Features

Easy access to highway

Easy access to main roads

Elevated

Investment opportunity

Near amenities

Prime land

Planning zones

Zone	Cover factor	Build factor	Max height	Max floors	Affected percentage
Ka8	35%	60%	10 m	2	-

