

#1557

1-Bedroom Apartment, Parekkklisia, Limassol

📍 Parekkklisia, Limassol

€200,000 +VAT





Overview

Specifications

Bedrooms



1

Bathrooms



1

Covered



63 m²

Type

Apartment

Covered veranda

20 m²

Status

Under construction

Energy efficiency rating



Description

Presenting this exquisite three-floor building nestled in the Parekkklisia area in Limassol.

Conveniently located approximate 20 minutes from Limassol city center, this property offers seamless access to a variety of amenities. Designed and constructed with meticulous attention to detail, it caters to the tastes of both investors and home buyers.

The apartments feature outstanding design and high-quality finishes, ensuring a lifestyle of sophistication and comfort. Each unit offers flexibility and space. Its proximity to essential services makes it an ideal choice for those seeking a suburban living experience.

Available Apartment:

Apartment 105:

- Covered Area: 63m2

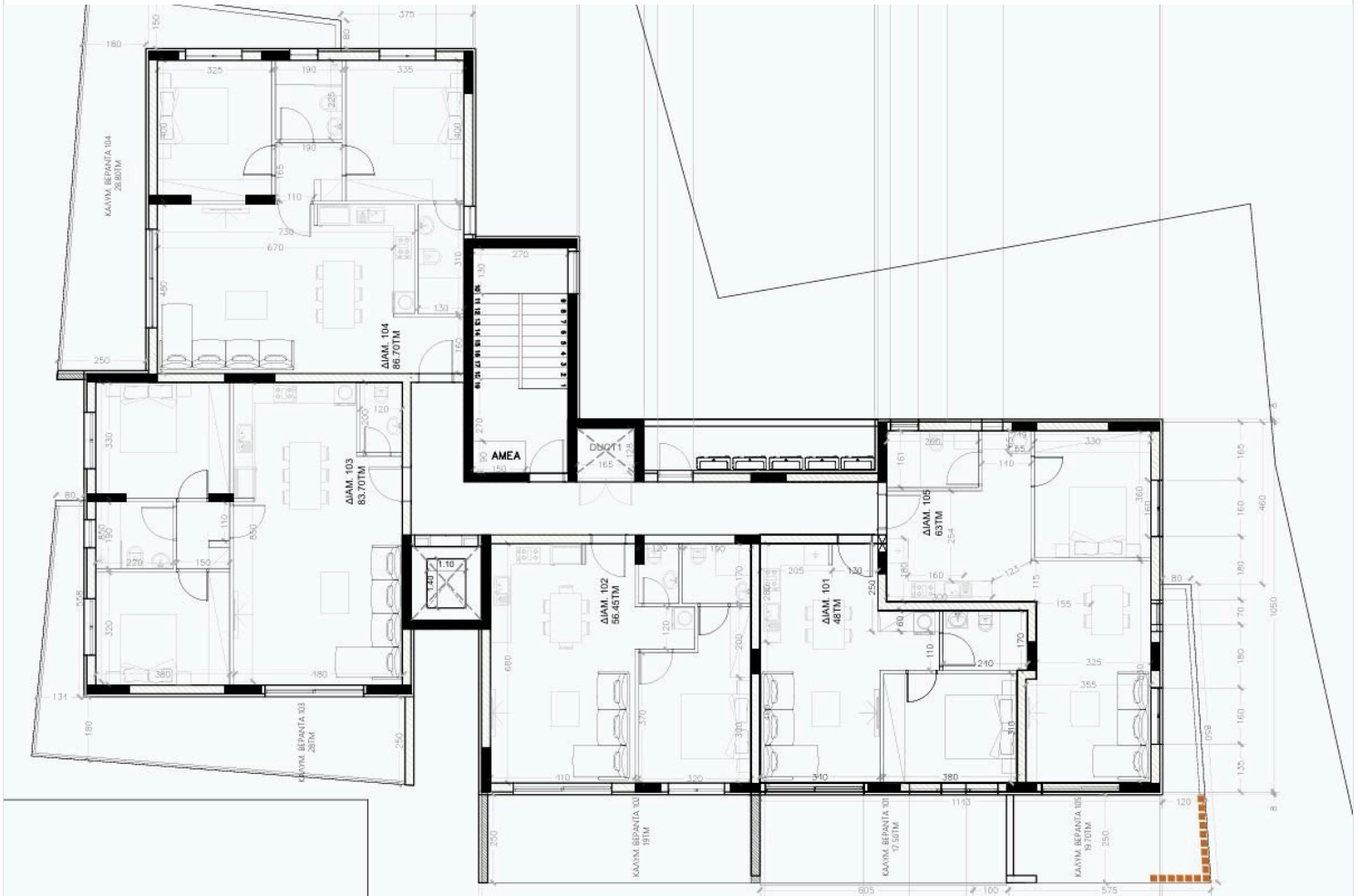
- Covered Veranda: 20

Price: €200.000+ VAT

Contact us today for detailed information!



Floor plans



Additional information

Facilities

Aircondition, Split system

Parking, Covered

Storage

Features

Balcony

Bright

Easy access to highway

Easy access to main roads

Elevated

High ceilings

Investment opportunity

Luxury specifications

Modern design

Near amenities

Open plan

Quiet area

